

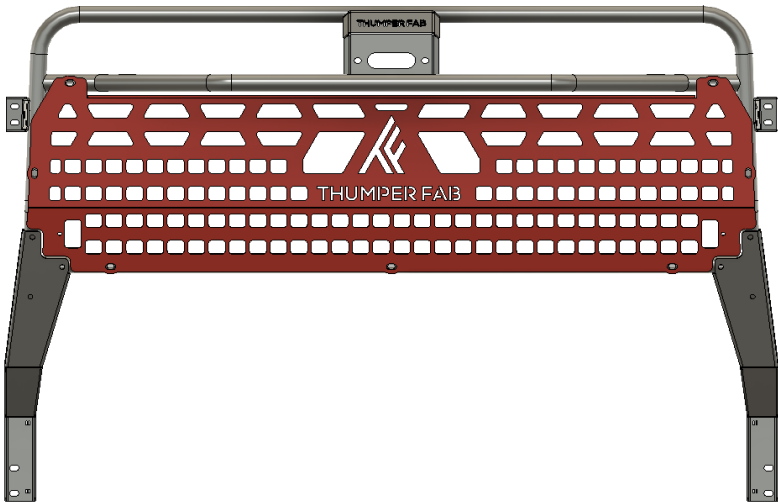


THUMPER FAB

Aluminum Audio Roofs • Roll Cages • UTV Accessories

Kawasaki Ridge Headache Rack

SKU: TF321601



Thumper Fab

5103 Elysian Fields Rd, Marshall, TX 75672

Customer Service: 903-472-0928

www.thumperfab.com

Ver. 0626

Kawasaki Ridge Headache Rack

SKU: TF321601



PARTS

REF	QTY	DESCRIPTION
1	1	Headache Rack Frame
2	1	Rear Panel
3	1	Upper Mount Bracket - Driver
4	1	Upper Mount Bracket - Passenger
5	1	Lower Mount Bracket - Driver
6	1	Lower Mount Bracket - Passenger
7	1	Winch
HARDWARE KIT		
A	4	M6x16mm Flange Head Bolts
B	4	M6 Lock Washer
C	4	M8x16mm Flange Head Bolts
D	7	M8x20mm Button Head Screws
E	7	M8 Flat Washer
F	10	M8x45mm Button Head Screws
G	10	M8 Nylon Lock Nut
H	4	M8 Slip on Barrel Nuts
I	4	M10-1.25x20mm Flange Head Bolt
J	2	Fender Clips

TOOLS

- Box Knife
- 10mm Socket and Wrench
- 13mm Socket and Wrench
- 15mm Socket
- 5mm Allen Wrench
- Drill

BEFORE YOU BEGIN

If you do not feel comfortable installing your **Thumper Fab** Headache Rack, please see your nearest Thumper Fab® Dealer for installation.

Torque Specs:

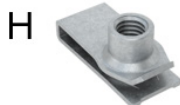
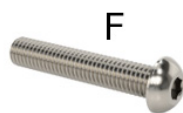
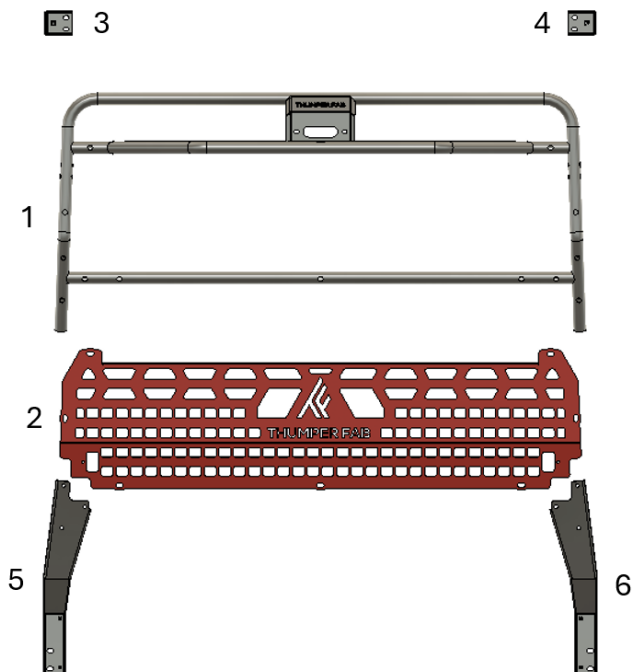
SIZE (STANDARD)	GRADE 5	GRADE 8	SIZE (METRIC)	CLASS 8.8	CLASS 10.9
5/16"	15 ft/lbs	20 ft/lbs	6MM	5 ft/lbs	9 ft/lbs
3/8"	30 ft/lbs	35 ft/lbs	8MM	18 ft/lbs	23 ft/lbs
7/16"	45 ft/lbs	60 ft/lbs	10MM	32 ft/lbs	45 ft/lbs
1/2"	65 ft/lbs	90 ft/lbs	12MM	55 ft/lbs	75 ft/lbs
9/16"	95 ft/lbs	130 ft/lbs	14MM	85 ft/lbs	120 ft/lbs
5/8"	135 ft/lbs	175 ft/lbs	16MM	130 ft/lbs	165 ft/lbs
3/4"	185 ft/lbs	280 ft/lbs	18MM	170 ft/lbs	240 ft/lbs

Kawasaki Ridge Headache Rack

SKU: TF321601



PARTS



INSTALLATION INSTRUCTIONS

Installation Preparation

Lift the bed fully to gain access to the lower mount points for the headache rack. Use a box cutter to trim the plastic in the region shown below in grey to gain access to the lower mounting holes (**FIG 1 & FIG 2**).



FIG 1 & FIG 2 - Trim the plastics for the lower cab mounts

This is what the lower cab mount should look like once the plastic is trimmed (**FIG 3**).



FIG 3 - Lower Cab mount exposed after trimming

INSTALLATION INSTRUCTIONS

Installation Preparation

Slide the M8 slip on barrel nuts over the upper brackets that are welded to the back of the cab frame (**FIG 4**).



FIG 4 - Install the M8 slip on barrel nuts onto the OEM roll cage brackets

Fasten the rear panel to the headache rack frame using 7 x M8x20mm button head screws and 7 x M8 flat washers. Tighten using a 5mm allen wrench (**FIG 5**).



FIG 5 - Fasten rear panel to headache rack frame

INSTALLATION INSTRUCTIONS

Installation Preparation

Fasten the manual switch for the winch to the rear panel. Use the hardware that was fastened to the manual switch in the headache rack box (FIG 6).



FIG 6 - Fasten the manual switch to the rear panel

Fasten the fairlead to the headache rack frame using hardware provided in the winch box (FIG 7).



FIG 7 - Fasten the fairlead to the headache rack frame

INSTALLATION INSTRUCTIONS

Installation Preparation

Fasten the winch to the headache rack frame using the 4 x M6x16mm flange head bolts and 4 x M6 lock washers. Tighten using a 10mm socket (**FIG 8**).



FIG 8 - Fasten the winch to the headache rack frame

Fasten the winch stop and winch hook to the winch rope using the hardware provided in the winch box (**FIG 9**).



FIG 9 - Fasten the winch stop and winch hook to the winch rope

INSTALLATION INSTRUCTIONS

Installation Preparation

Fasten the upper mount brackets to the slip on M8 slip on barrel nuts using 4 x M8x16mm flange head bolts. Do not fully tighten at this time (**FIG 10**).

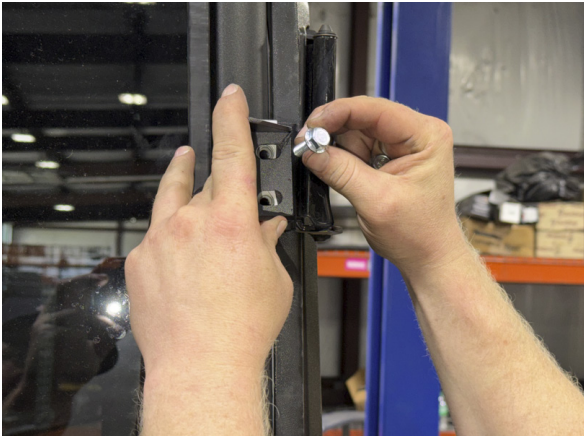


FIG 10 - Loosely fasten the upper mount brackets to the vehicle

Loosely fasten the lower mount brackets to the headache rack frame using 6 x M8x45mm button head screws and 6 x M8 nylon lock nuts. Do not fully tighten at this time (**FIG 11**).



FIG 11 - Fasten the lower mount brackets to the headache rack frame

INSTALLATION INSTRUCTIONS

Installation

With the help of a second person, lift the headache rack into position (FIG 12).



FIG 12 - Hang the headache rack frame from the upper mount brackets

Use 4 x M8x45mm button head screws and 4 x M8 nylon lock nuts to mount the headache rack frame to the upper mount brackets (FIG 13).



FIG 13 - Use the M8 hardware to fasten the headache rack to the upper mount brackets

INSTALLATION INSTRUCTIONS

Installation

Fasten the lower mount brackets of the headache rack to the frame using 4 x M10x20mm flange head bolts. Once all 4 lower mount bolts have been started, tighten all mounting hardware evenly (**FIG 14**).



FIG 14 - Fasten the lower mount brackets to the frame. Tighten all hardware

Winch Wiring

Do not refer to wiring instructions contained in the winch box as it is not suitable for this application. Reference the following wiring diagram for wiring instructions for the winch (**FIG 15**).

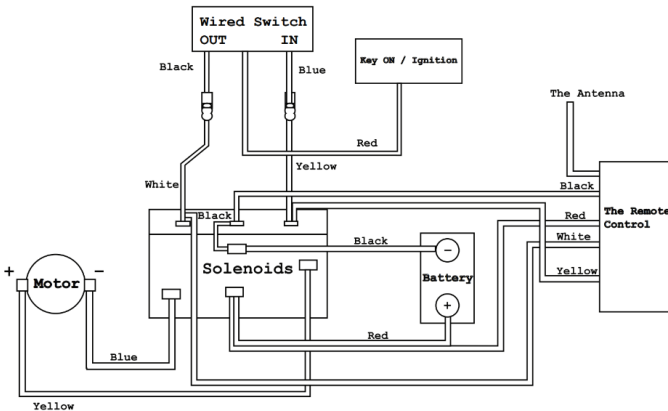


FIG 15 - Winch wiring diagram

INSTALLATION INSTRUCTIONS

Installation

If you have received a “new” style winch contactor box, there is no small red wire to connect to an ignition source. Simply wire the winch contactor box to the battery with the short red and black wires and connect the manual switch to the winch contactor box (**FIG 16**).



FIG 16 - Plug manual switch harness into winch contactor box

Winch Wiring

Once the winch harness is plugged into the winch contactor box, tighten the cable to the winch contactor box using your hands only. Pliers may strip the threads and should be avoided (**FIG 17**)



FIG 17 - Tighten switch harness to contactor box

INSTALLATION INSTRUCTIONS

Installation

Locate the winch contactor box to the inside of the rear passenger wheel well, close enough to the battery for the short leads coming from the contactor box to reach the positive and negative terminal on the battery. Once placed, use a 5/16" drill bit and the contactor box as a template to transfer the mounting holes to the wheel well and mount it using 2 x fender clips from the hardware kit (**FIG 18**).



FIG 18 - Fasten the winch contactor box to the inside of the rear passenger wheel

Attach the blue and yellow wires from the winch contactor box to the winch terminals. Additionally, route the wires from the manual switch to the contactor box and connect the black and blue wires from the switch to the contactor box (**FIG 19**).



FIG 19 - Connect winch and manual switch to contactor box

INSTALLATION INSTRUCTIONS

Installation

If the pod light option was selected, a break down of the wiring harness is shown below (**FIG 20**).

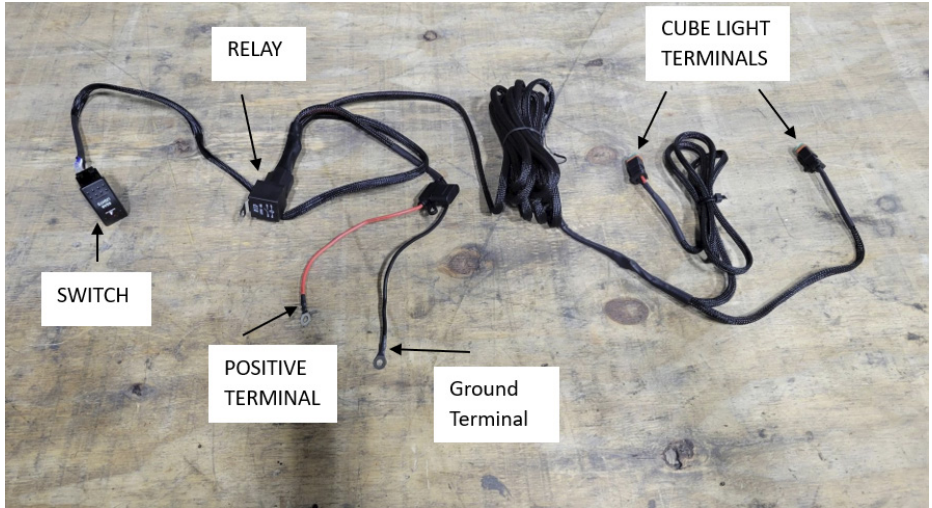


FIG 20 - Pod Light wiring harness break down

Access the internal busbar by removing the panel directly below the passenger glovebox. Feed the cube light pigtails from the harness down the inside of the dash and route to the back of the vehicle inside the floor tunnel. Tie wires up away from hot or rotating components and plug the harness into the lights (**FIG 21**).



FIG 21 - Route the pod light pigtails to the lights and plug in the lights

INSTALLATION INSTRUCTIONS

Installation

Select a slot to mount the switch, use a box knife to cut out the rectangle for the switch to be installed in. Connect the wires to the switch in the order of black, white, and blue starting at the top terminal of the switch. Once connected, insert the switch into the dash (**FIG 22 & FIG 23**).



FIG 22 & FIG 23 - Connect the harness to the switch and insert switch in dash

Fasten the ring terminals from the harness to the positive and negative terminals of the busbar. Once connected, test the lights to make sure they function properly (**FIG 24**).

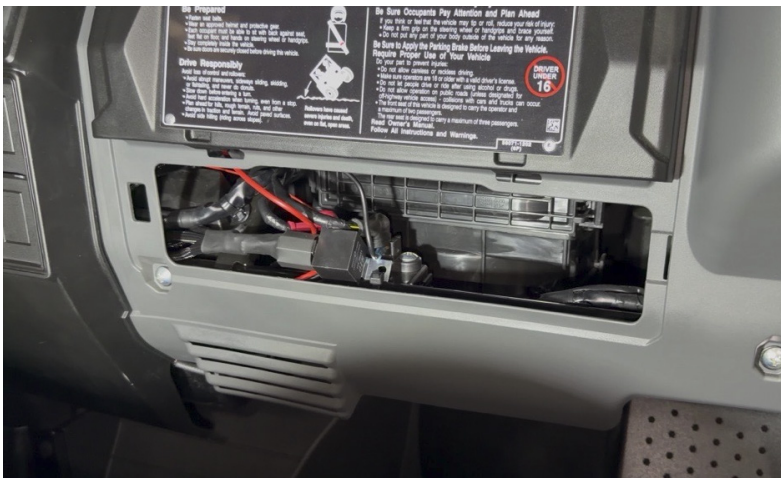


FIG 24 - Attach the ring terminals from the harness to the busbar

INSTALLATION INSTRUCTIONS

PRODUCT DISCLAIMER

The installation of products sold or manufactured by Thumper Fabrication, LLC (Thumper Fab) including, but not limited to suspension components such as lift kits, audio roofs, roll cages, frame stiffener kits, and tires that exceed the original specifications for the vehicle, may change the vehicle's center of gravity and handling characteristics both on- and off-road. You are aware that the installation of tires that are larger than original vehicle specifications may reduce the effectiveness of the braking system. Use of these products may place added stress to the original factory vehicle components which could cause them to weaken or possibly fail.

Products sold or manufactured by Thumper Fab are intended for off-road use only. Operation of a vehicle modified with these products on a road could result in serious bodily injury or death, and such operation may violate the laws of your state or municipality. You agree to operate your vehicle exclusively in the manner intended by the vehicle manufacturer. You agree that failure to safely and reasonably operate your vehicle could result in serious bodily injury or death, and that, as a result of installation of this product(s) to your vehicle, extreme care must be taken to prevent vehicle rollover or loss of control, which may be more likely to occur as a result of said modifications. You will avoid unsafe maneuvers, including sudden sharp turns or other abrupt maneuvers, which could make a vehicular accident more likely. You understand that Thumper Fab is not responsible or liable for any damages or any injuries to yourself or your passengers that could occur upon possible accidents due to driver error, incorrect installations, bad judgment, incompatibility with other aftermarket accessories or natural disasters to the fullest extent allowable by law. You will have all vehicle occupants fasten seatbelts, if equipped, and wear proper safety equipment, such as DOT approved helmet and eye protection prior to operating the vehicle. You understand and acknowledge that failure to wear proper safety equipment may increase the risk of serious bodily injury or death to yourself and any passengers.

Proper installation of products sold or manufactured by Thumper Fab requires knowledge of the factory recommended procedures for removal and installation of original equipment components. Installation of these products without proper knowledge and experience may affect the performance of these components and the safety of the vehicle and cause serious bodily injury or death. It is strongly recommended that a certified mechanic familiar with the installation of similar components perform the product(s) installation.

Prior to installing any products sold or manufactured by Thumper Fab, you will perform or cause to be performed an inspection of their vehicle to confirm its condition is suitable for the installation of these products. A proper inspection of the vehicle includes confirmation that the vehicle has not been in a collision and is free of corrosion. If the vehicle is suspected to have been in a collision or misused, or is otherwise unsuitable for modification, you will not install the product(s). You will continue to inspect the vehicle prior to each use to confirm its condition is suitable for its intended use, and you acknowledge that the failure to do so may result in serious bodily injury or death, as well as damage to the vehicle itself.

You will install any warning labels provided with the product so it may be prominently seen by yourself and all passengers. You will notify all passengers of the modifications performed to your vehicle prior to operation.

Insurance companies may handle coverage of a modified vehicle differently. Please check with your insurance carrier prior to modifying the vehicle to ensure your coverage remains sufficient. Installation of this product(s) may void your vehicle warranty. If this is a concern, please check with the manufacturer or dealer before purchase or installation of this product(s).



THUMPER FAB

Thumper Fab

5103 Elysian Fields Rd, Marshall, TX 75672

Customer Service: 903-472-0928

www.thumperfab.com