



THUMPER FAB

Aluminum Audio Roofs ♦ Roll Cages ♦ UTV Accessories

Kawasaki Ridge Boxed Nerf Rails

SKU: TF320701



Thumper Fab

5103 Elysian Fields Rd, Marshall, TX 75672

Customer Service: 903-472-0928

www.thumperfab.com

Ver. 0426

Kawasaki Ridge Boxed Nerf Rails

SKU: TF320701



PARTS

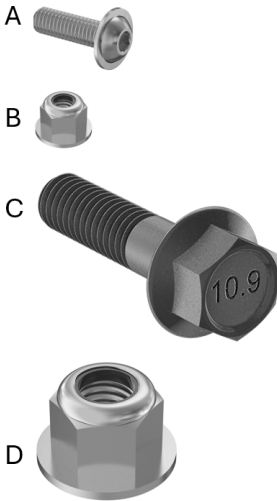
REF	QTY	DESCRIPTION
1	1	Lower Body - Driver
2	1	Lower Body - Passenger
3	1	Top Body - Driver
4	1	Top Body - Passenger
5	8	Mount Bracket
6	8	Mount Tube
7	1	Rear Cap - Driver
8	1	Rear Cap - Passenger
HARDWARE KIT		
A	32	M6x20mm Button Flange Screw
B	32	M6 Flange Nylon Lock Nut
C	8	M10x110mm Flange Head Bolt
D	8	M10 Flange Nylon Lock Nut

TOOLS

- Drill
- 1" Hole Saw
- 4mm Allen Wrench
- 10mm Socket
- Phillips Head Screwdriver
- Push Pin Removal Tool
- Deburring Tool
- 15mm Socket and Wrench

BEFORE YOU BEGIN

If you do not feel comfortable installing your **Thumper Fab** Nerf Rails, please see your nearest Thumper Fab® Dealer for installation.



Torque Specs:

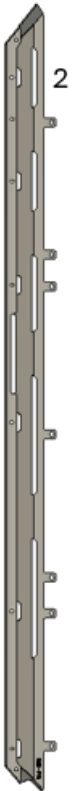
SIZE (STANDARD)	GRADE 5	GRADE 8	SIZE (METRIC)	CLASS 8.8	CLASS 10.9
5/16"	15 ft/lbs	20 ft/lbs	6MM	5 ft/lbs	9 ft/lbs
3/8"	30 ft/lbs	35 ft/lbs	8MM	18 ft/lbs	23 ft/lbs
7/16"	45 ft/lbs	60 ft/lbs	10MM	32 ft/lbs	45 ft/lbs
1/2"	65 ft/lbs	90 ft/lbs	12MM	55 ft/lbs	75 ft/lbs
9/16"	95 ft/lbs	130 ft/lbs	14MM	85 ft/lbs	120 ft/lbs
5/8"	135 ft/lbs	175 ft/lbs	16MM	130 ft/lbs	165 ft/lbs
3/4"	185 ft/lbs	280 ft/lbs	18MM	170 ft/lbs	240 ft/lbs

Kawasaki Ridge Boxed Nerf Rails

SKU: TF320701



PARTS



INSTALLATION INSTRUCTIONS

Installation Preparation

Remove the front side skirt plastic panels on both the driver and passenger side. Use a push pin removal tool to remove the push pins that fasten the panel to the vehicle (**FIG 1**).



FIG 1 - Remove push pins using a push pin removal tool

Use a phillips head screwdriver to remove the screws that fasten the front side panels to the vehicle in the door jams (**FIG 2**).



FIG 2 - Remove the phillips head screws from the side panels

INSTALLATION INSTRUCTIONS

Installation Preparation

Remove the 4 screws using a phillips head screwdriver from the outside of the vehicle (**FIG 3 & FIG 4**).

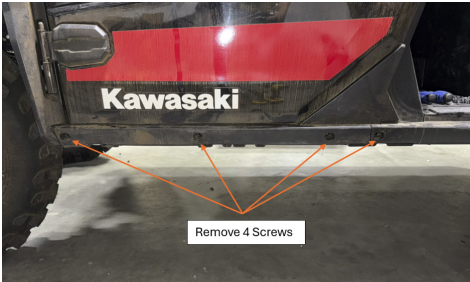


FIG 3 & FIG 4 - Remove phillips head screws

Remove the front side panels once all fasteners have been removed (**FIG 5**).



FIG 5 - Remove the front side panels

INSTALLATION INSTRUCTIONS

Installation Preparation

Locate the dimples on the inside of the front side panel. These dimples are used to mark the locations to be drilled out with the 1" hole saw (FIG 6 & FIG 7).



FIG 6 & FIG 7 - Locate the dimples on the inside of the panel

Use the drill with a 1" hole saw to drill the dimples out on the inside of the panel (FIG 8).



FIG 8 - Drill out the dimples on the inside of the front panels

INSTALLATION INSTRUCTIONS

Installation Preparation

Use a deburring tool to clean the hole of any plastic burrs (**FIG 9**).



FIG 9 - Deburr the holes drilled in the panel

Reinstall the front side panels and tighten all fasteners (**FIG 10**).



FIG 10 - Reinstall the front side panels

INSTALLATION INSTRUCTIONS

Installation Preparation

Locate the 2 x front most dimples on the rear side panels (**FIG 11**).



FIG 11 - Locate the dimples on the rear side panels

Drill the 2 x front most dimples using the 1" hole saw bit. Once drilled, deburr the holes (**FIG 12**).



FIG 12 - Drill the 2 front most dimples in the rear panels

INSTALLATION INSTRUCTIONS

Installation Preparation

Remove the phillips head screw at the front section of the skid plate located in the front wheel well (**FIG 13**).



FIG 13 - Remove the front skid plate phillips head screw

Remove the skid plate mounting bolts using a 10mm socket. Remove enough skid plate mounting bolts to allow the skid plate to hang down to gain access to the driver and passenger frame rails (**FIG 14**).

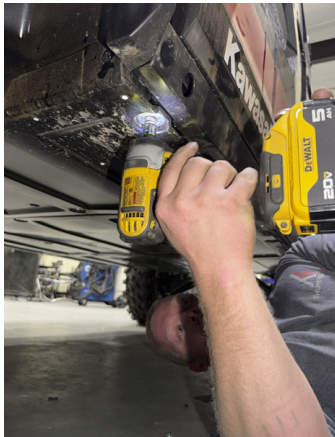


FIG 14 - Remove skid plate mounting bolts

INSTALLATION INSTRUCTIONS

Installation

Fasten the mount brackets to the vehicle in the previously drilled holes using the mount tubes, M10x110mm flange head bolts and the M10 flange nylon lock nuts (**FIG 15**).



FIG 15 - Fasten the mount brackets to the vehicle

Tighten the mount brackets to the vehicle using a 15mm socket and wrench. Make sure the mount brackets are level with the floor before fully tightening (**FIG 16**).



FIG 16 - Fully tighten mount brackets

INSTALLATION INSTRUCTIONS

Installation

Place the lower body of the nerf rail over the mount brackets, be sure the skid plate is on the inside of the lower nerf rail body (**FIG 17**).



FIG 17 - Place the lower nerf rail body over the mount brackets

Slide the large OEM washers in between the nerf rail body and the skid plate before loosely fastening the nerf rail lower body to the underside of the frame using the M6x20mm button flange screws (**FIG 18 & FIG 19**).



FIG 18 & FIG 19 - Loosley mount the lower nerf rail body to the underside of the vehicle

INSTALLATION INSTRUCTIONS

Installation

Fasten the top nerf rail body to the lower nerf rail body using the M6x20mm button flange screws and M6 flange nylon lock nuts. Leave the fasteners out of the 3 rear most holes. Tighten using a 4mm allen wrench and a 10mm socket (**FIG 20**).



FIG 20 - Mount the top body to the lower body

Fasten the rear cap to the rear most 3 holes in the nerf rail assembly. Fasten using 3 x M6x20mm button flange screws. These screws will screw in from the underside of the vehicle into the riv-nuts provided in the rear cap. Once tight, reinstall any remaining OEM skid plate fasteners, and make sure all nerf rail hardware is tight (**FIG 21**).



FIG 21 - Mount the rear cap to the nerf rail assemblies

INSTALLATION INSTRUCTIONS

PRODUCT DISCLAIMER

The installation of products sold or manufactured by Thumper Fabrication, LLC (Thumper Fab) including, but not limited to suspension components such as lift kits, audio roofs, roll cages, frame stiffener kits, and tires that exceed the original specifications for the vehicle, may change the vehicle's center of gravity and handling characteristics both on- and off-road. You are aware that the installation of tires that are larger than original vehicle specifications may reduce the effectiveness of the braking system. Use of these products may place added stress to the original factory vehicle components which could cause them to weaken or possibly fail.

Products sold or manufactured by Thumper Fab are intended for off-road use only. Operation of a vehicle modified with these products on a road could result in serious bodily injury or death, and such operation may violate the laws of your state or municipality. You agree to operate your vehicle exclusively in the manner intended by the vehicle manufacturer. You agree that failure to safely and reasonably operate your vehicle could result in serious bodily injury or death, and that, as a result of installation of this product(s) to your vehicle, extreme care must be taken to prevent vehicle rollover or loss of control, which may be more likely to occur as a result of said modifications. You will avoid unsafe maneuvers, including sudden sharp turns or other abrupt maneuvers, which could make a vehicular accident more likely. You understand that Thumper Fab is not responsible or liable for any damages or any injuries to yourself or your passengers that could occur upon possible accidents due to driver error, incorrect installations, bad judgment, incompatibility with other aftermarket accessories or natural disasters to the fullest extent allowable by law. You will have all vehicle occupants fasten seatbelts, if equipped, and wear proper safety equipment, such as DOT approved helmet and eye protection prior to operating the vehicle. You understand and acknowledge that failure to wear proper safety equipment may increase the risk of serious bodily injury or death to yourself and any passengers.

Proper installation of products sold or manufactured by Thumper Fab requires knowledge of the factory recommended procedures for removal and installation of original equipment components. Installation of these products without proper knowledge and experience may affect the performance of these components and the safety of the vehicle and cause serious bodily injury or death. It is strongly recommended that a certified mechanic familiar with the installation of similar components perform the product(s) installation.

Prior to installing any products sold or manufactured by Thumper Fab, you will perform or cause to be performed an inspection of their vehicle to confirm its condition is suitable for the installation of these products. A proper inspection of the vehicle includes confirmation that the vehicle has not been in a collision and is free of corrosion. If the vehicle is suspected to have been in a collision or misused, or is otherwise unsuitable for modification, you will not install the product(s). You will continue to inspect the vehicle prior to each use to confirm its condition is suitable for its intended use, and you acknowledge that the failure to do so may result in serious bodily injury or death, as well as damage to the vehicle itself.

You will install any warning labels provided with the product so it may be prominently seen by yourself and all passengers. You will notify all passengers of the modifications performed to your vehicle prior to operation.

Insurance companies may handle coverage of a modified vehicle differently. Please check with your insurance carrier prior to modifying the vehicle to ensure your coverage remains sufficient. Installation of this product(s) may void your vehicle warranty. If this is a concern, please check with the manufacturer or dealer before purchase or installation of this product(s).



THUMPER FAB

Thumper Fab

5103 Elysian Fields Rd, Marshall, TX 75672

Customer Service: 903-472-0928

www.thumperfab.com