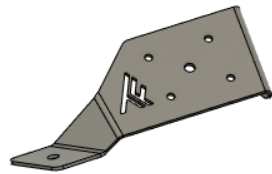
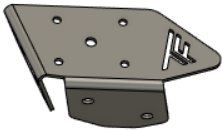




Can-Am Defender HD11 **Phone Mount Kits**

SKU: TF290902 & TF290903



Thumper Fab

5103 Elysian Fields Rd, Marshall, TX 75672

Customer Service: 903-472-0928

www.thumperfab.com

Ver. 1225

Can-Am Defender HD11 Phone Mount Kits

SKU: TF290902 & TF290903



PARTS

REF	QTY	DESCRIPTION
1	1	Dash Mount Bracket - Driver or Passenger
2	1	Wiring Harness (If charging option was selected)
3	1	Phone Charging Unit or Phone Clamp
4	1	Ball Mount
5	1	Adjustable Swivel Mount
HARDWARE		
A	5	#14 x 3/4" Phillips Head Screw
B	2	M6 Flange Nylon Lock Nut
C	2	1/4" Ring Terminals
D	4 IN	3/8" Heat Shrink
E	4	#8 Nylon Insert Lock Nut
F	4	#8x1/2" Socket Cap Screw
G	1	Grommet

TOOLS

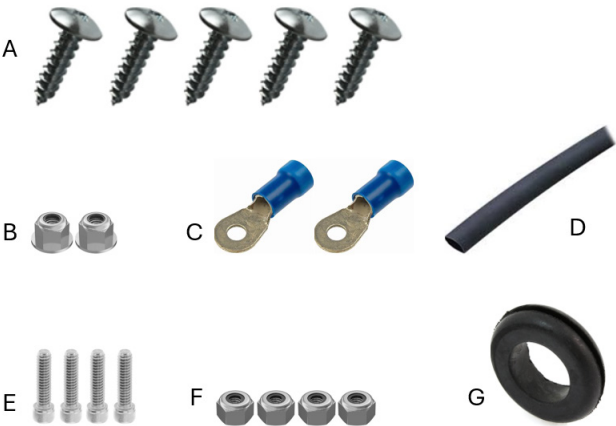
- Drill
- 1/8" Drill Bit
- 5/8" Drill Bit
- Phillips Head Screwdriver
- 9/64" Allen Wrench
- 11/32" Allen Wrench
- Marker
- Snips
- Heat gun

Torque Specs:

SIZE (STANDARD)	GRADE 5	GRADE 8	SIZE (METRIC)	CLASS 8.8	CLASS 10.9
5/16"	15 ft/lbs	20 ft/lbs	6MM	5 ft/lbs	9 ft/lbs
3/8"	30 ft/lbs	35 ft/lbs	8MM	10 ft/lbs	23 ft/lbs
7/16"	45 ft/lbs	60 ft/lbs	10MM	32 ft/lbs	45 ft/lbs
1/2"	65 ft/lbs	90 ft/lbs	12MM	55 ft/lbs	75 ft/lbs
9/16"	85 ft/lbs	130 ft/lbs	14MM	85 ft/lbs	120 ft/lbs
5/8"	125 ft/lbs	175 ft/lbs	16MM	120 ft/lbs	165 ft/lbs
3/4"	185 ft/lbs	260 ft/lbs	18MM	170 ft/lbs	240 ft/lbs

BEFORE YOU BEGIN

If you do not feel comfortable installing your **Thumper Fab** Phone Charger Mounts, please see your nearest Thumper Fab® Dealer for installation.



INSTALLATION INSTRUCTIONS

Installation Preparation

Fasten the ball mount to the dash mount bracket using 4 x #8x1/2" socket cap screws and 4 x #8 nylon lock nuts. Tighten using a 9/64" allen wrench and an 11/32" wrench (**FIG 1 & FIG 2**).

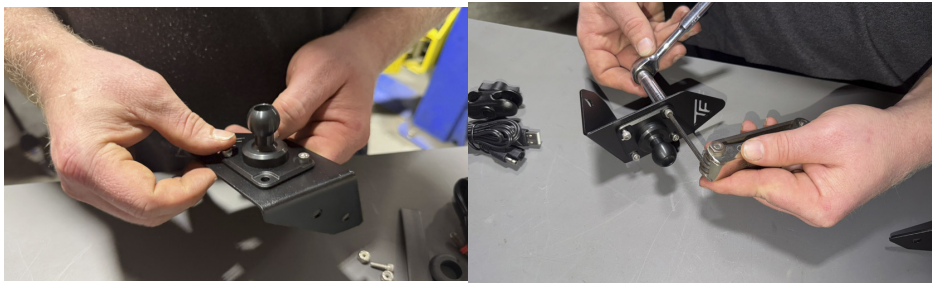


FIG 1 & FIG 2 - Fasten Ball Mount to Dash Mount Bracket

Use the bracket as a template to mark the mount holes to be predrilled. Hold the bracket securely in position before marking with a marker to be sure marked holes will be accurate for bracket mounting (**FIG 3 & FIG 4**).



DRIVER



PASSENGER

FIG 3 & FIG 4 - Mark Dash Mount Bracket mount holes to be pre drilled

INSTALLATION INSTRUCTIONS

Installation Preparation

Once mount holes are marked, drill pilot holes for mount screws using a 1/8" drill bit (**FIG 5 & FIG 6**).



FIG 5 & FIG 6 - Drill pilot holes

If a phone charger mount is being installed, drill a hole through the dash underneath where the mount bracket will be mounted. Hole may need to be stepped up to allow grommet to be installed. **(BE CAREFUL NOT TO DRILL DEEPER THAN NEEDED TO BREAK THROUGH THE DASH TO AVOID CONTACTING WIRING OR HVAC COMPONENTS)** (**FIG 7**).



FIG 7 - Drill hole for wiring (IF INSTALLING WIRELESS PHONE CHARGER)

INSTALLATION INSTRUCTIONS

Installation Preparation

Connect the phone charging unit to the ball mount using the adjustable swivel mount. Route wire through grommet and fasten the phone charger mount assembly to the dash using 4 x #14x3/4" phillips head screws (**FIG 8**).



FIG 8 - Mount bracket assembly to dash

To wire the wireless phone charger, begin by snipping the crimped connectors off the end of the wiring harness and replace with the ring terminals from the hardware kit. Use a heat gun and the heat shrink to seal connections. The positive wire will have the fuseable link inline (**FIG 9 & FIG 10**).



FIG 9 & FIG 10 - Replace connectors on harness with 1/4" ring terminals

INSTALLATION INSTRUCTIONS

(OPTIONAL) - WIRING INSTRUCTIONS - if the charging option was selected, begin the wiring process by gaining access to the busbar located under the primary dash pad. Start this process by removing the A-Pillar plastic tunnel. To remove this plastic panel, the windshield struts will need to be disconnected. Support the windshield using a block of wood or something similar and disconnect the windshield lifting struts from the frame of the vehicle near the A-Pillar (**FIG 11**).



FIG 11 - Disconnect Windshield Struts from A-Pillar Mount

Remove the plastic push pins using push pin pliers or similar tool and remove the top torx head bolt with a T30 Torx (**FIG 12 & FIG 13**).

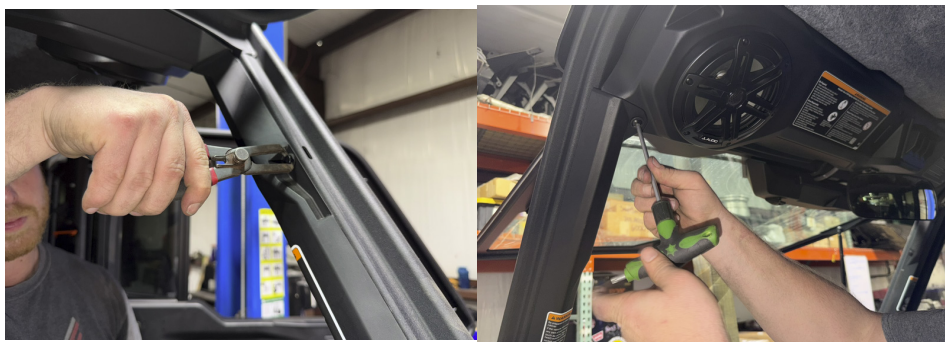


FIG 12 & FIG 13 - Remove fasteners holding A-Pillar plastic tunnel to vehicle

INSTALLATION INSTRUCTIONS

Gently remove the A-Pillar plastic tunnel by pulling away from the roll cage. Be careful to pull evenly and to check for any clips that may be hung up during the removal process (**FIG 14**).



FIG 14 - Remove A-Pillar Plastic Tunnel

Remove dash closeout panel using a flat head screwdriver or similar tool (**FIG 15**).



FIG 15 - Remove Dash Closeout Panel

INSTALLATION INSTRUCTIONS

Remove the dash perimeter screws using a T30 Torx and gently pull up on dash pad to gain access to the busbar located centrally under dash pad (**FIG 16 & FIG 17**).



FIG 16 & FIG 17 - Remove dash pad fasteners

Connect the positive wires (**will have fuseable link inline**) and negative wire from the harness to the red and black terminals of the busbar. Fasten the ring terminals to the busbar using the M6 flange nylon lock nuts, tighten using a 10mm socket. Reassemble the dash and test the phone charger by inserting the key and tapping the start button once to simulate a key on command (**FIG 18**).



FIG 18 - Connect harness to busbar

INSTALLATION INSTRUCTIONS

PRODUCT DISCLAIMER

The installation of products sold or manufactured by Thumper Fabrication, LLC (Thumper Fab) including, but not limited to suspension components such as lift kits, audio roofs, roll cages, frame stiffener kits, and tires that exceed the original specifications for the vehicle, may change the vehicle's center of gravity and handling characteristics both on- and off-road. You are aware that the installation of tires that are larger than original vehicle specifications may reduce the effectiveness of the braking system. Use of these products may place added stress to the original factory vehicle components which could cause them to weaken or possibly fail.

Products sold or manufactured by Thumper Fab are intended for off-road use only. Operation of a vehicle modified with these products on a road could result in serious bodily injury or death, and such operation may violate the laws of your state or municipality. You agree to operate your vehicle exclusively in the manner intended by the vehicle manufacturer. You agree that failure to safely and reasonably operate your vehicle could result in serious bodily injury or death, and that, as a result of installation of this product(s) to your vehicle, extreme care must be taken to prevent vehicle rollover or loss of control, which may be more likely to occur as a result of said modifications. You will avoid unsafe maneuvers, including sudden sharp turns or other abrupt maneuvers, which could make a vehicular accident more likely. You understand that Thumper Fab is not responsible or liable for any damages or any injuries to yourself or your passengers that could occur upon possible accidents due to driver error, incorrect installations, bad judgment, incompatibility with other aftermarket accessories or natural disasters to the fullest extent allowable by law. You will have all vehicle occupants fasten seatbelts, if equipped, and wear proper safety equipment, such as DOT approved helmet and eye protection prior to operating the vehicle. You understand and acknowledge that failure to wear proper safety equipment may increase the risk of serious bodily injury or death to yourself and any passengers.

Proper installation of products sold or manufactured by Thumper Fab requires knowledge of the factory recommended procedures for removal and installation of original equipment components. Installation of these products without proper knowledge and experience may affect the performance of these components and the safety of the vehicle and cause serious bodily injury or death. It is strongly recommended that a certified mechanic familiar with the installation of similar components perform the product(s) installation.

Prior to installing any products sold or manufactured by Thumper Fab, you will perform or cause to be performed an inspection of their vehicle to confirm its condition is suitable for the installation of these products. A proper inspection of the vehicle includes confirmation that the vehicle has not been in a collision and is free of corrosion. If the vehicle is suspected to have been in a collision or misused, or is otherwise unsuitable for modification, you will not install the product(s). You will continue to inspect the vehicle prior to each use to confirm its condition is suitable for its intended use, and you acknowledge that the failure to do so may result in serious bodily injury or death, as well as damage to the vehicle itself.

You will install any warning labels provided with the product so it may be prominently seen by yourself and all passengers. You will notify all passengers of the modifications performed to your vehicle prior to operation.

Insurance companies may handle coverage of a modified vehicle differently. Please check with your insurance carrier prior to modifying the vehicle to ensure your coverage remains sufficient. Installation of this product(s) may void your vehicle warranty. If this is a concern, please check with the manufacturer or dealer before purchase or installation of this product(s).



Thumper Fab

5103 Elysian Fields Rd, Marshall, TX 75672

Customer Service: 903-472-0928

www.thumperfab.com