



THUMPER FAB

Aluminum Audio Roofs ♦ Roll Cages ♦ UTV Accessories

CF Moto U10 XL Pro Roof Rack

SKU: TF281901 & TF281902



Thumper Fab

5103 Elysian Fields Rd, Marshall, TX 75672

Customer Service: 903-472-0928

www.thumperfab.com

Ver. 0925

CF Moto U10 XL Pro Roof Rack

SKU: TF281901 & TF281902



PARTS

| REF | QTY | DESCRIPTION |
|--------------|-----|--|
| 1 | 1 | Main Rail - DR |
| 2 | 1 | Main Rail - PA |
| 3 | 1 | Front Mount Bracket - DR |
| 4 | 1 | Front Mount Bracket - PA |
| 5 | 2 | Rear Mount Bracket |
| 6 | 1 | Front Brow |
| 7 | 6 | Tie Down Rail (3 for 3 Seat) |
| 8 | 1 | Horizontal Bar Clamp (1 Pair) (CREW ONLY) |
| 9 | 2 | Logo Tags |
| 10 | 3 | Tie Down Accent - DR (1 for 3 Seat) (Optional) |
| 11 | 3 | Tie Down Accent - PA (1 for 3 Seat) (Optional) |
| 12 | 1 | 40 Inch Light Bar Bracket - DR (Optional) |
| 13 | 1 | 40 Inch Light Bar Bracket - PA (Optional) |
| 14 | 1 | KC Light Bar Bracket - DR (Optional) |
| 15 | 1 | KC Light Bar Bracket - PA (Optional) |
| HARDWARE KIT | | |
| A | 30 | 1/4" x 3/4" Button Head Screws |
| B | 30 | 1/4" Nylon Lock Nuts |
| C | 12 | 5/16" Flat Washer |
| D | 6 | 5/16" Bonded Washer |
| E | 6 | 5/16" Nylon Insert Lock Nut |
| F | 4 | 5/16" x 1-1/4" Hex Bolt |
| G | 2 | 5/16" x 2-3/4" Hex Bolt |
| H | 4 | 1/8" Rivet |
| I | 2 | M10 x 45mm Flange Head Bolt |
| J | 2 | M10 Flange Nylon Lock Nut |
| K | 2 | Spacer |

TOOLS

- 5/32" Allen Wrench
- 7/16" Wrench
- 1/2" Socket and Wrench
- 15mm Socket and Wrench
- Drill
- 5/16" Drill Bit
- Snips
- Rivet Gun
- Oscillating Saw
- T30 Torx

BEFORE YOU BEGIN

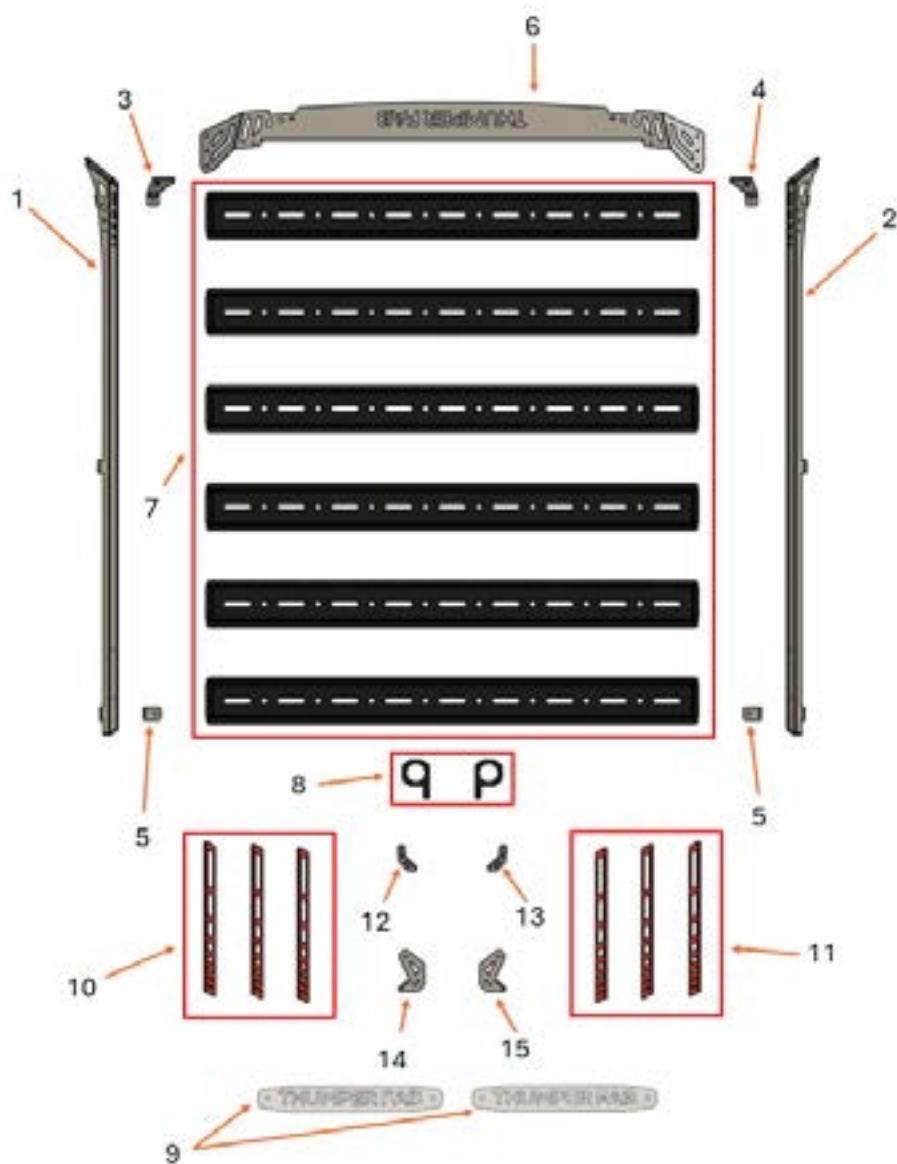
If you do not feel comfortable installing your **Thumper Fab** Roof Rack please see your nearest CF Moto® Dealer for installation.

Torque Specs:

| SIZE (STANDARD) | GRADE 5 | GRADE 8 |
|-----------------|------------|------------|
| 5/16" | 15 ft/lbs | 20 ft/lbs |
| 3/8" | 30 ft/lbs | 35 ft/lbs |
| 7/16" | 45 ft/lbs | 60 ft/lbs |
| 1/2" | 65 ft/lbs | 90 ft/lbs |
| 9/16" | 95 ft/lbs | 130 ft/lbs |
| 5/8" | 135 ft/lbs | 175 ft/lbs |
| 3/4" | 185 ft/lbs | 240 ft/lbs |
| SIZE (METRIC) | CLASS 8.8 | CLASS 10.9 |
| 6mm | 5 ft/lbs | 8 ft/lbs |
| 8mm | 18 ft/lbs | 23 ft/lbs |
| 10mm | 32 ft/lbs | 45 ft/lbs |
| 12mm | 65 ft/lbs | 75 ft/lbs |
| 14mm | 85 ft/lbs | 120 ft/lbs |
| 16mm | 130 ft/lbs | 165 ft/lbs |
| 18mm | 170 ft/lbs | 240 ft/lbs |

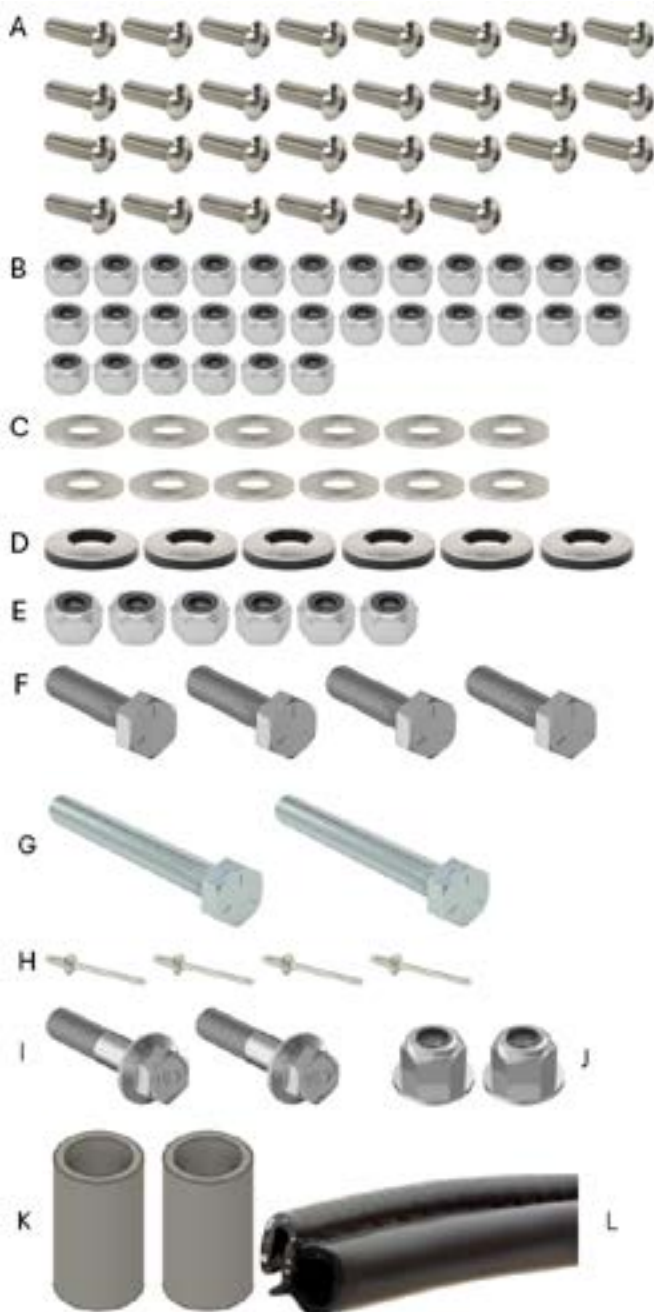
INSTALLATION INSTRUCTIONS

PARTS



INSTALLATION INSTRUCTIONS

HARDWARE KIT



INSTALLATION INSTRUCTIONS

Installation process is the same for crew and 3 seat, except a 3 seat vehicle does not use bar clamps and has slightly less hardware. For Installation on a 3 seat, ignore FIG 7-9, & 19-23.

Installation Preparation

Use 24 x 1/4" x 3/4" button head screws (A) and 24 x 1/4" nylon lock nuts (B) to mount the tie down rails (7) to the main rails (1&2). If the accent tie down rail option (9&10) was purchased, mount the accent tie down rails (9&10) under the tie down rails (7) during assembly. Use a 5/32" allen wrench and a 7/16" wrench to loosley tighten, do not fully tighten (FIG 1 & FIG 2).



FIG 1 & FIG 2 - Fasten Tie Down Rails to Main Rails

Fasten the front brow to the main rails using 6 x 1/4" x 3/4" button head screws (A) and 6 x 1/4" nylon lock nuts (B). Loosley tighten using a 5/32" allen wrench and a 7/16" wrench (FIG 3).



FIG 3 - Fasten Front Brow to Main Rails

INSTALLATION INSTRUCTIONS

Installation Preparation

Remove the 2 x OEM bolts (furthest from the center of the vehicle) that fasten the front cross tube to the roll cage. Also, loosen the 2 x inner most OEM bolts to allow for the front mount brackets (**3&4**) to be placed into position. Once bracket is in position, reinstall outer most bolts through front mount brackets (**3&4**). Leave mounting bolts loose until assembly is complete (**FIG 4 & FIG 5**).



FIG 4 & FIG 5 - Fasten Front Mount Brackets to Vehicle Frame

Fasten the rear mount brackets (**5**) to the vehicle with the 2 x M10x45mm flange head bolts (**I**) and 2 x M10 flange nylon lock nuts (**J**). Removal of OEM bolt and nut is removed and is replaced with provided M10x45mm flange head bolts (**I**) and M10 flange nylon lock nuts (**J**). Make sure that the rear mount brackets are flush against underside of roof before tightening using a 15mm socket and wrench (**FIG 6**).



FIG 6 - Fasten Rear Mount Brackets to Vehicle

INSTALLATION INSTRUCTIONS

Installation Preperation

Remove the middle cross bar plastic gaurd using a T30 Torx. Install the pair of horizontal bar clamps (8) onto the middle cross bar using the rubber isolators and hardware provided in the bar clamp box. Before tightening fully, make sure bar clamps (8) are slid as far apart as possible from the center of the vehicle and that the small hole in the clamp is facing the rear of the vehicle (**FIG 7**).



FIG 7 - Fasten Horizontal Bar Clamp to Middle Cross Bar

Insert a spacer (K) in between the roof and the top side of each of the horizontal bar clamps (8). Use a drill with a 5/16" drill bit to drill through the bar clamp, spacer, and roof for the center mount holes (**FIG 8**).



FIG 8 - Drill Center Mount Holes

INSTALLATION INSTRUCTIONS

Installation Preparation

Insert 2 x 5/16" x 2-3/4" hex bolts (**G**) with flat washers (**C**) through the horizontal bar clamp, spacer, and roof. Slide 5/16" bonded washer (**D**) over threads (on top of roof) to provide a water tight seal and hold fastener in place (**FIG 9**).



FIG 9 - Insert Fastener through Bar Clamp

Use a drill with a 5/16" drill bit to drill through the rear mount brackets and roof for the rear mount holes (**FIG 10**).



FIG 10 - Drill Rear Mount Holes

INSTALLATION INSTRUCTIONS

Installation Preparation

Use a drill with a 5/16" drill bit to drill through the front mount brackets and roof for the front mount holes (**FIG 11**).



FIG 11 - Drill Front Mount Holes

Install the trim (**L**) over the leading edge (highlighted in yellow) of the front brow with the bulb side down to prevent the front brow from vibrating against the roof. Cut excess off using a pair of snips (**FIG 12**).



FIG 12 - Install Trim on Front Brow

INSTALLATION INSTRUCTIONS

Installation

Place the roof rack on top of the vehicle, placing a block of wood underneath the main rails will make hardware installation easier before fastening rack to the vehicle (**FIG 13**).



FIG 13 - Place Roof Rack on top of Vehicle

Insert 4 x 5/16" x 1-1/4" hex bolts (**F**) with flat washers (**C**) down through the roof rack with a 5/16" bonded washer (**D**) in between the roof rack and the top of the roof to seal the mounting holes drilled through the roof in previous steps (**FIG 14**).

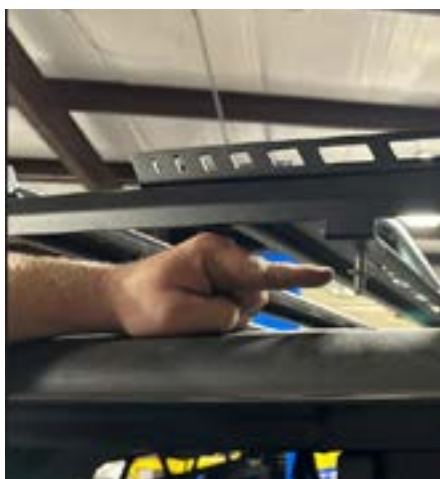


FIG 14 - Insert fasteners through front and rear mount holes

INSTALLATION INSTRUCTIONS

Installation

Fasten logo plates (9) to main rails using 4 x 1/8" rivets (H) and a rivet gun (FIG 15).



FIG 15 - Fasten Logo Plates to Main Rails

Set the roof rack down onto the roof sliding the front and rear mounting hardware through the roof and front and rear mount brackets. Guide the center mount hex bolts through the main rails as the rack is lowered. Cap the center mount bolt off with a flat washer (C) and 5/16" lock nut (E), tighten center mounts using a 1/2" wrench and socket (FIG 16).



FIG 16 - Set Roof Rack down on the Roof, guide hardware through respective holes

INSTALLATION INSTRUCTIONS

Installation

Tighten the front and rear mounts using a 1/2" socket and wrench. Tighten all roof rack assembly hardware using a 7/16" wrench and a 5/32" allen wrench (**FIG 17 & FIG 18**).



FIG 17 & FIG 18 - Tighten Front and Rear Mounts

Mark the middle cross bar plastic guard to be trimmed to allow for clearance to the horizontal bar clamps. Once marked, trim with an oscillating saw or other similar cutting tool (**FIG 19 & FIG 20**).



FIG 19 & FIG 20 - Mark and cut Middle Cross Bar Plastic Guard

INSTALLATION INSTRUCTIONS

Installation

Additional trimming of plastics may be required for ideal fitment. Once end caps are trimmed, hold plastic guard up to middle cross bar to mark remaining locations to be trimmed. Trim using oscillating saw (**FIG 21**).



FIG 21 - Mark and cut remaining Plastic to achieve proper fitment

Reinstall the middle cross bar plastic guard using the OEM hardware. Tighten using a T30 Torx (**FIG 22 & FIG 23**).



FIG 22 & FIG 23 - Reinstall Middle Cross Bar Plastic Gaurd

INSTALLATION INSTRUCTIONS

Assembling Light Bar Mounts

The 2 Row Light Bar mounts (**FIG 24**) will use 2 x 1/4" screws and 2 x 1/4" locknuts each. The optional KC Light Bar Mounts (**FIG 25**) will use (3) of each. Mount these to the back side of the Front Brow as shown.



FIG 24 - 2 Row Light Bar Mounts



FIG 25 - KC Light Bar Mounts

INSTALLATION INSTRUCTIONS

Light Wiring

For wiring of the 2 row 40 inch light bar connect the harness to the bus bar under the hood (**FIG 26**) and locate the switch in the dash in an open slot. Connect harness to switch with black wire on top terminal, white on middle terminal, and blue terminal on the bottom terminal of the switch (**FIG 27**). Refer to KC Light instructions for wiring of KC Light Harness.



FIG 26 - Bus Bar wiring (Under Hood)



FIG 27 - Switch Wiring (In Dash)

INSTALLATION INSTRUCTIONS

PRODUCT DISCLAIMER

The installation of products sold or manufactured by Thumper Fabrication, LLC (Thumper Fab) including, but not limited to suspension components such as lift kits, audio roofs, roll cages, frame stiffener kits, and tires that exceed the original specifications for the vehicle, may change the vehicle's center of gravity and handling characteristics both on- and off-road. You are aware that the installation of tires that are larger than original vehicle specifications may reduce the effectiveness of the braking system. Use of these products may place added stress to the original factory vehicle components which could cause them to weaken or possibly fail.

Products sold or manufactured by Thumper Fab are intended for off-road use only. Operation of a vehicle modified with these products on a road could result in serious bodily injury or death, and such operation may violate the laws of your state or municipality. You agree to operate your vehicle exclusively in the manner intended by the vehicle manufacturer. You agree that failure to safely and reasonably operate your vehicle could result in serious bodily injury or death, and that, as a result of installation of this product(s) to your vehicle, extreme care must be taken to prevent vehicle rollover or loss of control, which may be more likely to occur as a result of said modifications. You will avoid unsafe maneuvers, including sudden sharp turns or other abrupt maneuvers, which could make a vehicular accident more likely. You understand that Thumper Fab is not responsible or liable for any damages or any injuries to yourself or your passengers that could occur upon possible accidents due to driver error, incorrect installations, bad judgment, incompatibility with other aftermarket accessories or natural disasters to the fullest extent allowable by law. You will have all vehicle occupants fasten seatbelts, if equipped, and wear proper safety equipment, such as DOT approved helmet and eye protection prior to operating the vehicle. You understand and acknowledge that failure to wear proper safety equipment may increase the risk of serious bodily injury or death to yourself and any passengers.

Proper installation of products sold or manufactured by Thumper Fab requires knowledge of the factory recommended procedures for removal and installation of original equipment components. Installation of these products without proper knowledge and experience may affect the performance of these components and the safety of the vehicle and cause serious bodily injury or death. It is strongly recommended that a certified mechanic familiar with the installation of similar components perform the product(s) installation.

Prior to installing any products sold or manufactured by Thumper Fab, you will perform or cause to be performed an inspection of their vehicle to confirm its condition is suitable for the installation of these products. A proper inspection of the vehicle includes confirmation that the vehicle has not been in a collision and is free of corrosion. If the vehicle is suspected to have been in a collision or misused, or is otherwise unsuitable for modification, you will not install the product(s). You will continue to inspect the vehicle prior to each use to confirm its condition is suitable for its intended use, and you acknowledge that the failure to do so may result in serious bodily injury or death, as well as damage to the vehicle itself.

You will install any warning labels provided with the product so it may be prominently seen by yourself and all passengers. You will notify all passengers of the modifications performed to your vehicle prior to operation.

Insurance companies may handle coverage of a modified vehicle differently. Please check with your insurance carrier prior to modifying the vehicle to ensure your coverage remains sufficient. Installation of this product(s) may void your vehicle warranty. If this is a concern, please check with the manufacturer or dealer before purchase or installation of this product(s).



Thumper Fab

5103 Elysian Fields Rd, Marshall, TX 75672

Customer Service: 903-472-0928

www.thumperfab.com