

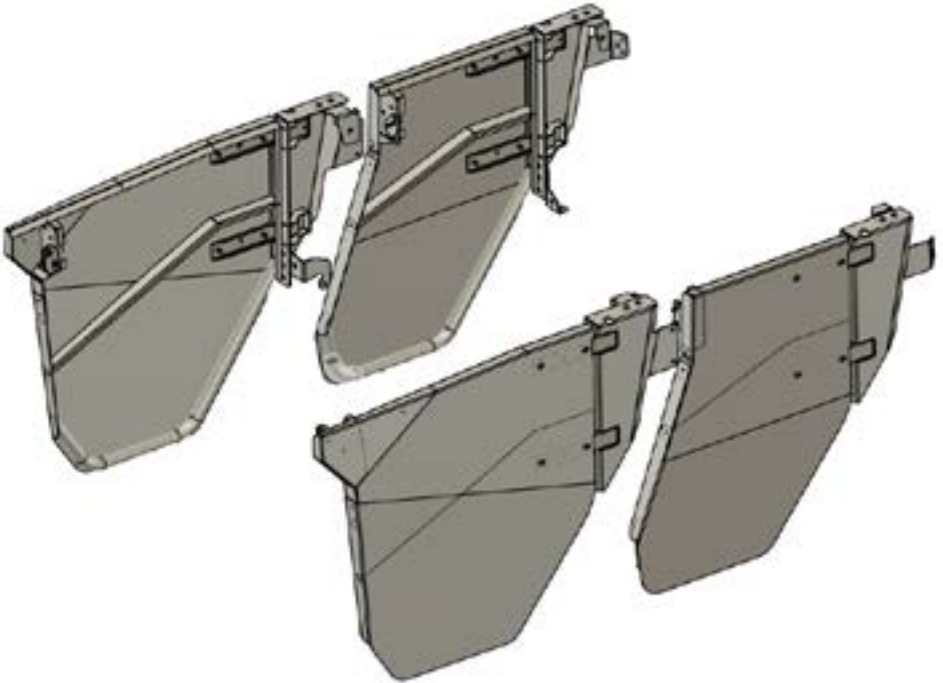


THUMPER FAB

Aluminum Audio Roofs • Roll Cages • UTV Accessories

CFMOTO U10 Pro-XL 3 Seat/Crew Doors

SKU: TF281701



BEFORE YOU BEGIN

If you do not feel comfortable installing your **Thumper Fab** U10 Pro-XL DOORS, please see your nearest THUMPER FAB Dealer for installation.

Thumper Fab

5103 Elysian Fields Rd, Marshall, Tx 75672

Customer Service: 903-472-0928

www.thumperfab.com

Ver. 0825

CFMOTO U10 Pro-XL FRONT DOOR KIT



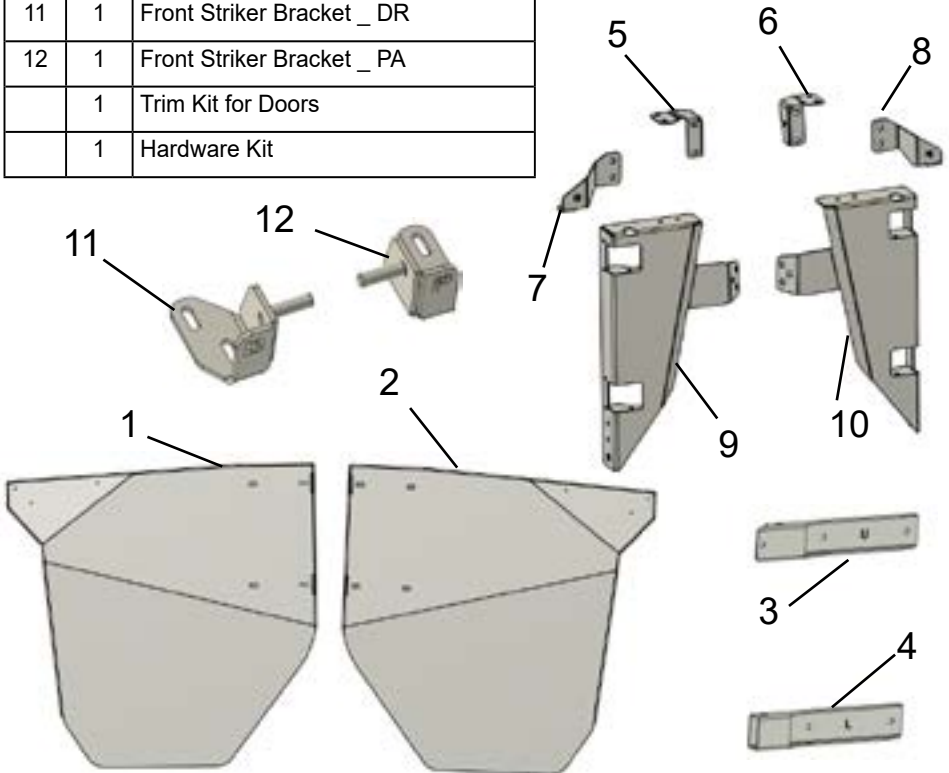
SKU: TF281701.WF

PARTS

REF	QTY	DESCRIPTION
1	1	Front Door - DR
2	1	Front Door - PA
3	2	Upper Hinge Pivot Arm
4	2	Lower Hinge Pivot Arm
5	1	Re. Hinge - Upper MT Bracket _DR
6	1	Re. Hinge - Upper MT Bracket _PA
7	1	Re. Hinge - Lower MT Bracket _DR
8	1	Re. Hinge - Lower MT Bracket _PA
9	1	Re. Hinge Assembly _DR
10	1	Re. Hinge Assembly _PA
11	1	Front Striker Bracket _DR
12	1	Front Striker Bracket _PA
	1	Trim Kit for Doors
	1	Hardware Kit

TOOLS

- T30 Torx Driver
- 13 mm Wrench and Socket
- 7/16" Wrench and Socket
- 11/32" Wrench and Socket
- 6mm Allen
- 5mm Allen
- 5/32" Allen
- 9/64" Allen
- Trimming Tool (to trim plastic)



CFMOTO U10 Pro-XL REAR DOOR KIT



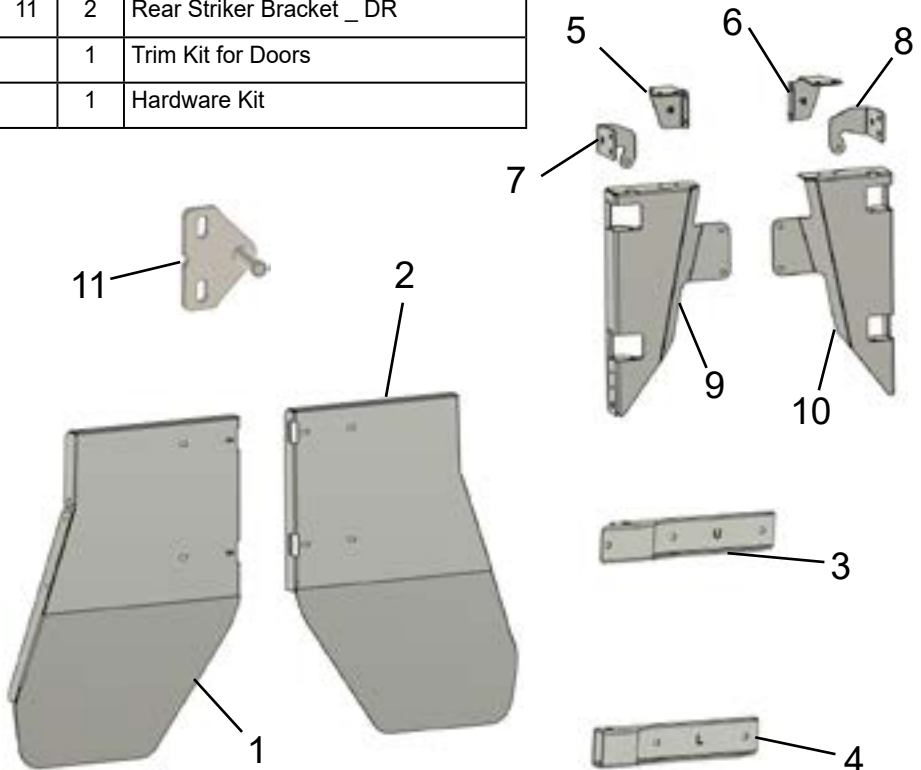
SKU: TF281701.WR

PARTS

REF	QTY	DESCRIPTION
1	1	Rear Door - DR
2	1	Rear Door - PA
3	2	Upper Hinge Pivot Arm
4	2	Lower Hinge Pivot Arm
5	1	Fr. Hinge - Upper MT Bracket _DR
6	1	Fr. Hinge - Upper MT Bracket _ PA
7	1	Fr. Hinge - Lower MT Bracket _ DR
8	1	Fr. Hinge - Lower MT Bracket _ PA
9		Fr. Hinge Assembly _ DR
10		Fr. Hinge Assembly _ PA
11	2	Rear Striker Bracket _ DR
	1	Trim Kit for Doors
	1	Hardware Kit

TOOLS

- T30 Torx Driver
- 13 mm Wrench and Socket
- 7/16" Wrench and Socket
- 11/32" Wrench and Socket
- 6mm Allen
- 5mm Allen
- 5/32" Allen
- 9/64" Allen
- Trimming Tool (to trim plastic)



CFMOTO U10 Pro-XL

3 Seat/Crew Doors



SKU: TF281701

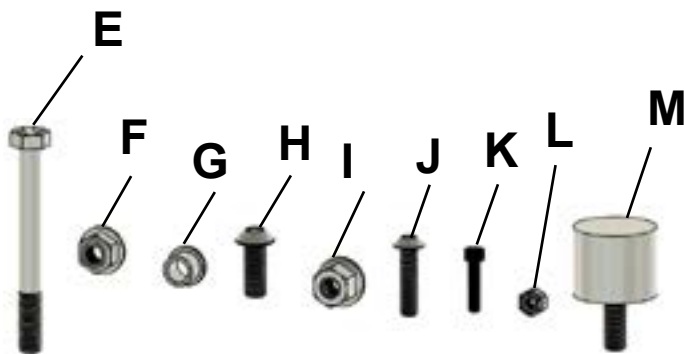
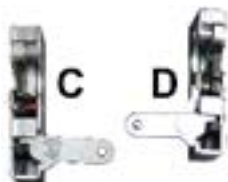
HARDWARE

(Quantities shown are for 1 pack. Double quantities for CREW DOORS)

A	2	1.25" Ball Knob
B	2	M6-1.0 x 20mm Hex Cap Screw
C	1	Rotary Latch (Driver Side) (Red Inside)
D	1	Rotary Latch (Passenger Side)
E	4	5/16" x 3" Hex Head Screw
F	4	5/16" Zinc Nylon Insert Flange Nut
G	8	5/16" Bronze Flange Bearing
H	30	M8x20mm Hex Drive Button Cap Bolt
I	18	M8 Hex Flange Nut
J	6	1/4"-20 x 1: Hex Drive Button Cap Screw
K	6	#8-32 x 1/2" Stainless Socket Cap Screw
L	6	#8-32 Locknut
M	2	Rubber Bumper

TOOLS

- T30 Torx Driver
- 13 mm Wrench and Socket
- 7/16" Wrench and Socket
- 11/32" Wrench and Socket
- 6mm Allen
- 5mm Allen
- 5/32" Allen
- 9/64" Allen
- Trimming Tool (to trim plastic)



CFMOTO U10 Pro-XL

3 Seat/Crew Doors



SKU: TF281701

!!! BEFORE YOU BEGIN !!!

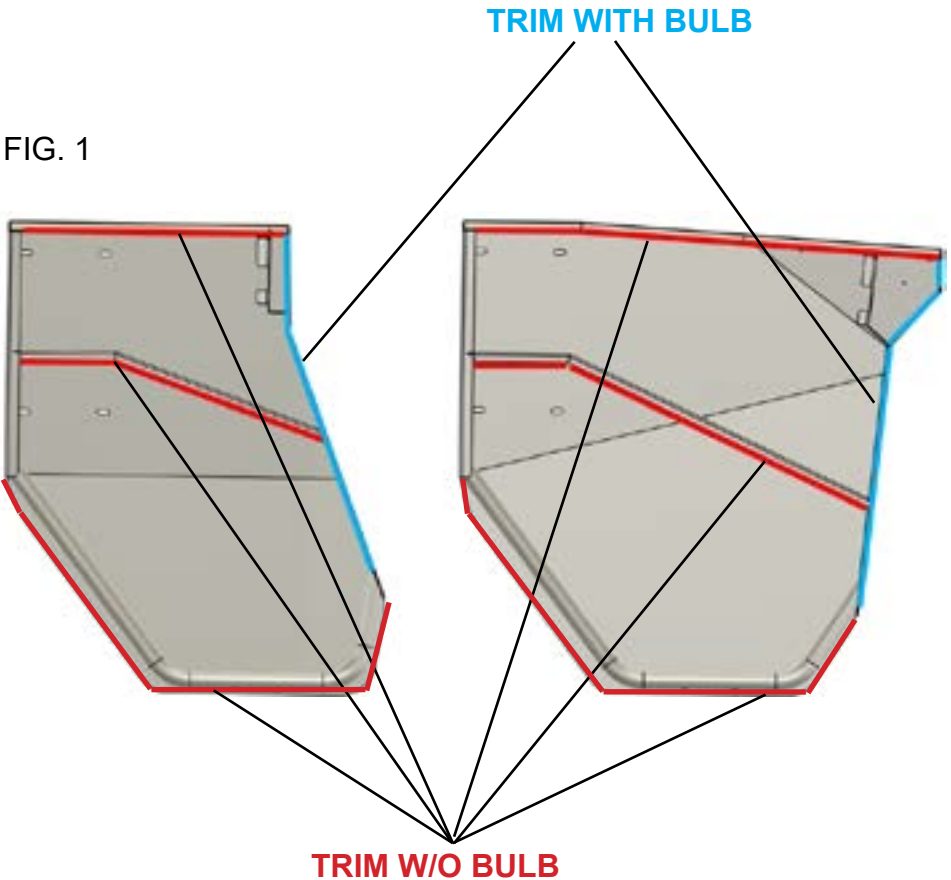
The unit shown in this installation guide is the CREW or 4 door unit. The difference between the 4 door and 2 door units are the positioning of the Hinge Assemblies. The hinge assembly that is used for the 2 seat model will be used on the REAR of a 4 seat model. IF YOU HAVE A 2 DOOR UNIT, be aware of this. There will be certain parts of this installation manual that you will need to disregard since the 2 seat kit will not include many of the components for the 4 seat doors that are outlined in this installation manual.

INSTALLATION INSTRUCTIONS

Prepare Hinge Assemblies and Doors for Installation

Remove all components from their boxes and organize them. If you purchased the CREW (4 Door) kit, keep all components from the FRONT and REAR boxes with each other in order to simplify the installation.

Next, start by installing and cutting the trim onto the doors as shown below. There will be (2) different types of edge trim in the kit. One of the edge trim have a round “bulb” attached to it (represented in **BLUE**). The other edge trim does not have the round “bulb” attached to it (represented in **RED**). (FIG 1)



INSTALLATION INSTRUCTIONS

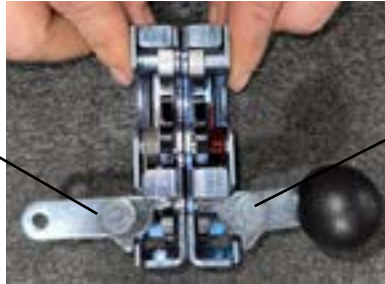
Next, locate the door latches and knobs, then fasten the knobs onto the latches. (FIG 4).



FIG. 4

Next, pre-install the door latches onto the doors as shown. (FIG 5-7).

**PASSENGER
LATCH**



**DRIVER
LATCH**

FIG. 5



FIG. 6 - DRIVER FRONT DOOR



FIG. 7 - DRIVER REAR DOOR

INSTALLATION INSTRUCTIONS

Next, locate all of the UPPER and LOWER PIVOT ARMS and also locate the bronze flange bearings in the hardware kit. You will need to carefully press or hammer the bearings into the pivot arms. If you are using a hammer, it's best to use a light composite or rubber hammer. (2) bronze bearings per arm, as shown below. (FIG 8 & 9). Also, on the upper pivot arms, you can also install the rubber bumpers at this time. (FIG 10).



FIG. 8



FIG. 9



FIG. 10

Next, the pivot arms can be placed into each hinge assembly as shown below, using the 5/16" bolts and nuts in hardware kit. (FIG 11 & 12).



FIG. 6 - Driver assembly shown.
Lower pivot arm



FIG. 7 - Driver assembly shown.
Lower pivot arm

INSTALLATION INSTRUCTIONS

Next, loosely attach the Upper and Lower MT Brackets to the Hinge Assembly. (FRONT HINGE ASSEMBLIES - FIG 11 & 12) (REAR HINGE ASSMEBLIES - FIG 13 & 14).



FIG. 11



FIG. 12



FIG. 13

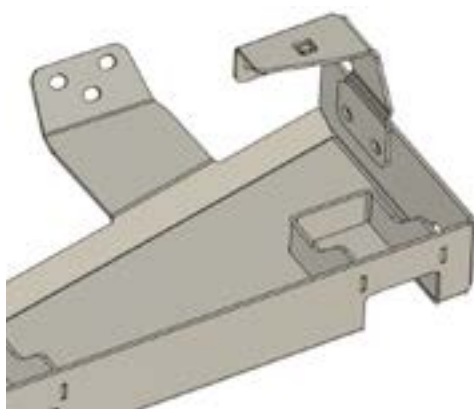


FIG. 14

INSTALLATION INSTRUCTIONS

Remove nets and OEM safety bars from the unit

Use the a T30 Torx driver, 5mm Allen, and a 13mm Socket to remove the bolts that attach the factory door nets and the factory safety bars to the unit. (FIG 1-6).



INSTALLATION INSTRUCTIONS

Remove OEM Door Net Latch

Using a T30, remove the 2 oem torx screws that fasten the door net latch. (FIG 7).



FIG 7

INSTALLATION INSTRUCTIONS

Prepping B-Pillar Plastic for Rear Door Striker Bracket (CREW ONLY)

IF you have a crew (4-seat) unit, you will need to remove the plastic cover on the B-Pillar and trim out the slots for bolt clearance for the rear door striker bracket. Shown below. (FIG 8-17)



FIG 8



FIG 9



FIG 10



FIG 11

INSTALLATION INSTRUCTIONS



FIG 12



FIG 13



FIG 14



FIG 15



FIG 16



FIG 17

INSTALLATION INSTRUCTIONS

Install Striker Brackets

Install the Front and Rear Striker Brackets as shown below, using the M8 Button head bolts provided in the kit. (FIG 18-20)



FIG 18



FIG 19

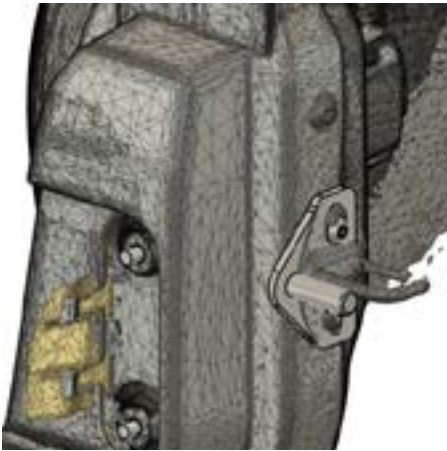


FIG 20

INSTALLATION INSTRUCTIONS

Install Hinge Assemblies

Each hinge assembly similarly attaches to the unit at the Upper Mount Bracket, but as for the Lower Mount Bracket, the ways they attach are different. If you have purchased just the 3 seat kit, then you will be attaching the brackets just as you otherwise would on the “REAR” of the 4 seat model.

So, if you have a crew (4 seat) model you will begin at the rear of the vehicle. If you have a 3 seat model, then follow along with these instructions as well. To begin, you will need to remove the seats pads (bottoms only, not the back rest). These just snap loose and set them aside. Next, there will be (4) bolts fastening the seat frame. Remove these (4) bolts using a 6mm Allen. After the seat frame is removed, the plastic cover underneath the seat can be lifted up and removed. There will be some trimming of this cover that is necessary for the Lower Mount Bracket to be properly installed. If you look at the cover, you will see a raised, rectangular area at the rearmost, outside corner of the cover. This can either be completely removed, or just carefully measure and cut a slot into it for the Lower Mount Bracket to fit properly. (FIG 21 & 22) Also, you will need to remove the (1) M8 bolt that's underneath the plastic cover, shown below. Save this bolt. See below. (FIG 23).



FIG 21



FIG 22

ALIGNMENT INSTRUCTIONS



FIG 23



FIG 24

Next, place the Hinge assembly into place. At the Upper Mount Bracket, you will use M8 bolts from the kit to fasten into the place where the (2) M8 bolts were removed to remove the factory safety bars. Leave these bolts loose for now. Next, at the bottom, replace the M8 bolt that was previously removed. Pass it through the Lower Mount Bracket and back into its threaded hole. Now you can tighten the hardware for the Hinge Assembly. **FIG 25 & 26.**



FIG 25



FIG 26

Next, IF YOU HAVE THE CREW MODEL, move onto the front door hinge assemblies. The installation of the fronts go just about the same as the rear, except the bolt that fastens the Front Lower Mount Bracket is the bolt that fastens the M8 Oem bolt that fastens the front seat frame to the chassis, next to the lower seat belt bolt. **FIG 27 & 28.**

ALIGNMENT INSTRUCTIONS



FIG 27



FIG 28

Once the hinge assemblies have been installed, you can then move onto installing the doors. It helps to have someone help you by lifting the door into place, insert the pivot arms through the back face of the door, and then align the holes in the pivot arms with the slots in the doors. Using more M8 button head bolts and locknuts to fasten the door onto the pivot arms. At this point you can make fine adjustments between the door, the striker brackets, and the latches in order to achieve a perfect fit. Last, install the logo tags using the #8-32 hardware. **FIG 29-33.**



FIG 29



FIG 30

ALIGNMENT INSTRUCTIONS



FIG 31

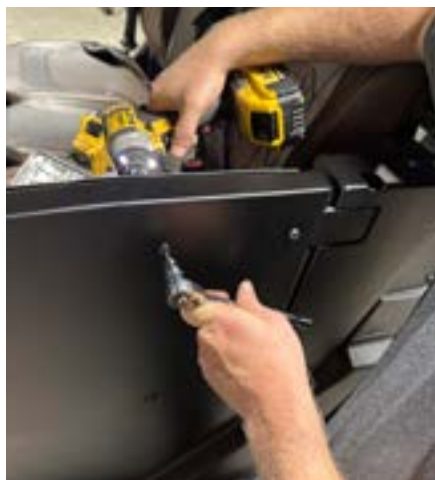


FIG 32



FIG 33

The installation of products sold or manufactured by Thumper Fab including, but not limited to suspension components such as lift kits, control arms, frame stiffener kits, roofs, roll cages, and tires that exceed the original specifications for the vehicle, may change the vehicle's center of gravity and handling characteristics both on- and off-road. You are aware that the installation of tires that are larger than original vehicle specifications may reduce the effectiveness of the braking system. Use of these products may place added stress to the original factory vehicle components which could cause them to weaken or possibly fail.

Products sold or manufactured by Thumper Fab are intended for off-road use only. Operation of a vehicle modified with these products on a road could result in serious bodily injury or death, and such operation may violate the laws of your state or municipality. You agree to operate your vehicle exclusively in the manner intended by the vehicle manufacturer. You agree that failure to safely and reasonably operate your vehicle could result in serious bodily injury or death, and that, as a result of installation of this product(s) to your vehicle, extreme care must be taken to prevent vehicle rollover or loss of control, which may be more likely to occur as a result of said modifications. You will avoid unsafe maneuvers, including sudden sharp turns or other abrupt maneuvers, which could make a vehicular accident more likely. You understand that Thumper Fab is not responsible or liable for any damages or any injuries to yourself or your passengers that could occur upon possible accidents due to driver error, incorrect installations, bad judgment, incompatibility with other aftermarket accessories or natural disasters to the fullest extent allowable by law. You will have all vehicle occupants fasten seatbelts, if equipped, and wear proper safety equipment, such as DOT approved helmet and eye protection prior to operating the vehicle. You understand and acknowledge that failure to wear proper safety equipment may increase the risk of serious bodily injury or death to yourself and any passengers.

Proper installation of products sold or manufactured by Thumper Fab requires knowledge of the factory recommended procedures for removal and installation of original equipment components. Installation of these products without proper knowledge and experience may affect the performance of these components and the safety of the vehicle and cause serious bodily injury or death. It is strongly recommended that a certified mechanic familiar with the installation of similar components perform the product(s) installation.

Prior to installing any products sold or manufactured by Thumper Fab, you will perform or cause to be performed an inspection of their vehicle to confirm its condition is suitable for the installation of these products. A proper inspection of the vehicle includes confirmation that the vehicle has not been in a collision and is free of corrosion. If the vehicle is suspected to have been in a collision or misused, or is otherwise unsuitable for modification, you will not install the product(s). You will continue to inspect the vehicle prior to each use to confirm its condition is suitable for its intended use, and you acknowledge that the failure to do so may result in serious bodily injury or death, as well as damage to the vehicle itself.

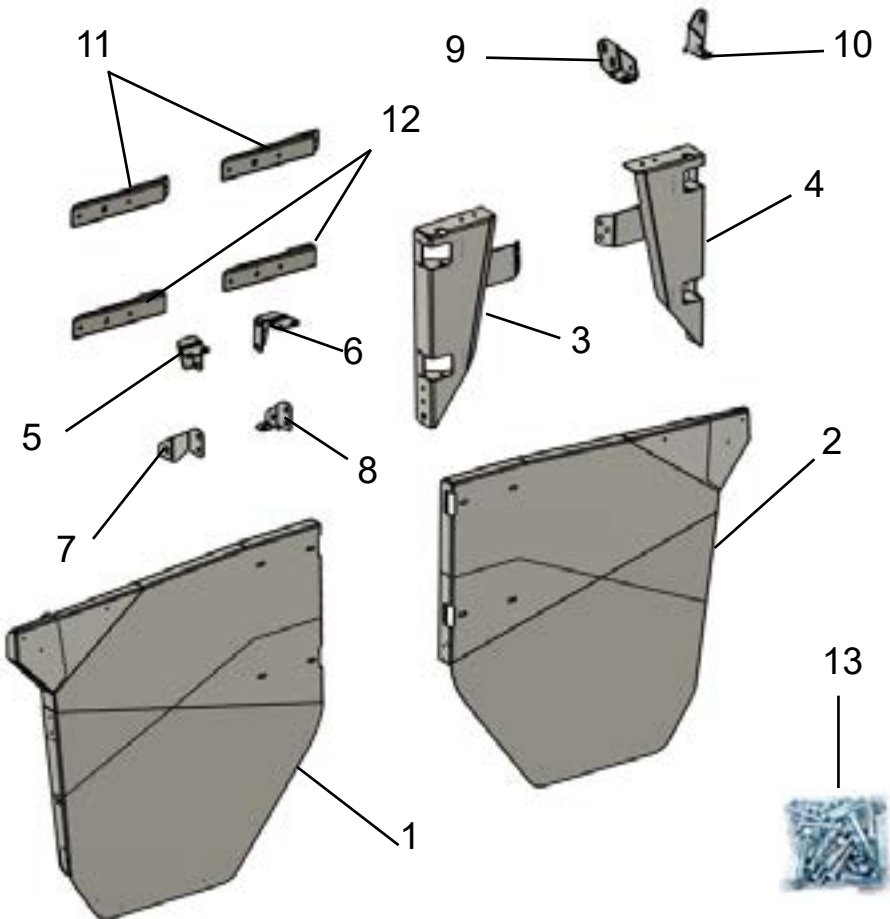
You will install any warning labels provided with the product so it may be prominently seen by yourself and all passengers. You will notify all passengers of the modifications performed to your vehicle prior to operation.

Insurance companies may handle coverage of a modified vehicle differently. Please check with your insurance carrier prior to modifying the vehicle to ensure your coverage remains sufficient.

Installation of this product(s) may void your vehicle warranty. If this is a concern, please check with the manufacturer or dealer before purchase or installation of this product(s).

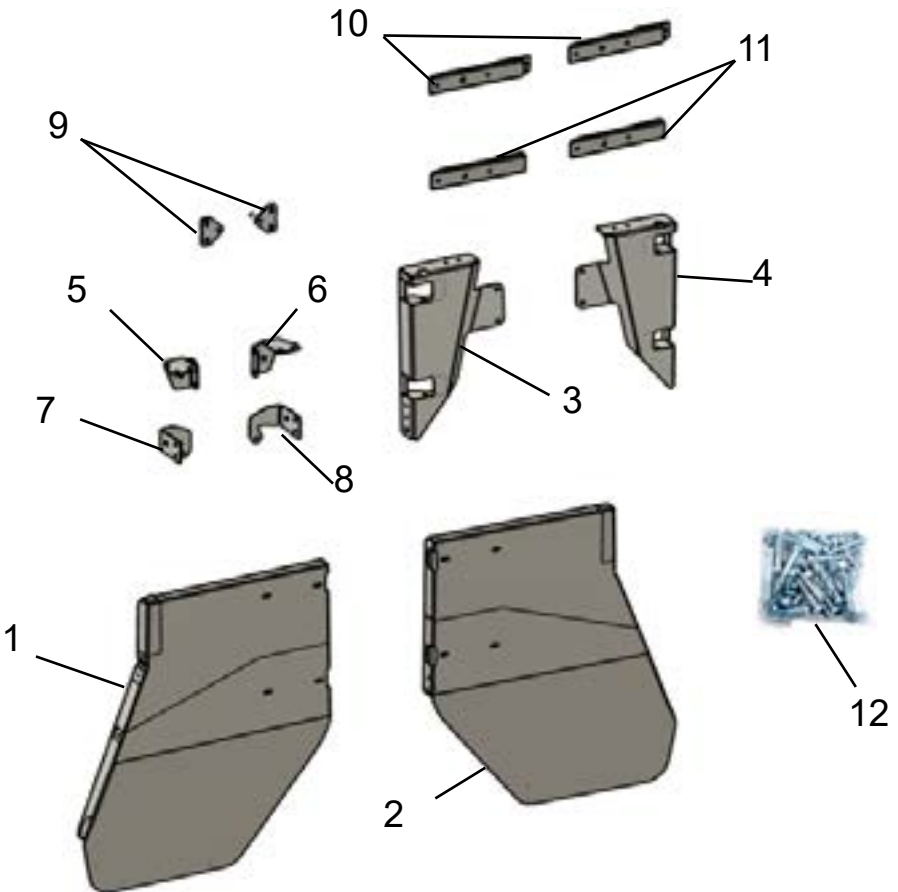
U10 Crew Doors - FRONT DOOR PACKOUT

ITEM	QTY	Part Number	Description
1	1	<u>TF281701.FDD</u>	Front Door - DR
2	1	<u>TF281701.FDP</u>	Front Door - PA
3	1	TF281701.RHD	Rear Hinge - DR
4	1	TF281701.RHP	Rear Hinge - PA
5	1	TF281701-12D	Rear Hinge Upper Mount Brkt - DR
6	1	TF281701-12P	Rear Hinge Upper Mount Brkt - PA
7	1	TF281701-13D	Rear Hinge Lower Mount Brkt - DR
8	1	TF281701-13P	Rear Hinge Lower Mount Brkt - PA
9	1	TF281701.FSD	Front Striker Brkt - DR
10	1	TF281701.FSP	Front Striker Brkt - PA
11	2	TF281701-10U	Hinge Pivot Arm - Upper
12	2	TF281701-10L	Hinge Pivot Arm - Lower
13	1	TF281701.X	Hardware Kit



U10 Crew Doors - REAR DOOR PACKOUT

ITEM	QTY	Part Number	Description
1	1	<u>TF281701.RDD</u>	Rear Door - DR
2	1	<u>TF281701.RDP</u>	Rear Door - PA
3	1	TF281701.FHD	Front Hinge - DR
4	1	TF281701.FHP	Front Hinge - PA
5	1	TF281701-06D	Front Hinge Upper Mount Brkt - DR
6	1	TF281701-06P	Front Hinge Upper Mount Brkt - PA
7	1	TF281701-07D	Front Hinge Lower Mount Brkt - DR
8	1	TF281701-07P	Front Hinge Lower Mount Brkt - PA
9	1	TF281701.RS	Rear Striker Brkt
10	2	TF281701-10U	Hinge Pivot Arm - Upper
11	2	TF281701-10L	Hinge Pivot Arm - Lower
12	1	TF281701.X	Hardware Kit





THUMPER FAB

Thumper Fab

5103 Elysian Fields Rd, Marshall, Tx 75672

Customer Service: 903-472-0928

www.thumperfab.com