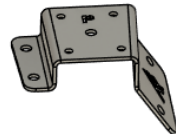
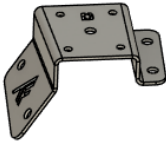




CF Moto U10 Pro **Phone Charge Mount**

SKU: TF280903 & TF280904



Thumper Fab

5103 Elysian Fields Rd, Marshall, TX 75672

Customer Service: 903-472-0928

www.thumperfab.com

Ver. 0725

CF Moto U10 Pro Phone Charger Mount

SKU: TF280903 & TF280904



PARTS

REF	QTY	DESCRIPTION
1	1	Phone Mount Bracket - (DR or PA)
2	1	Wiring Harness
3	1	Phone Charging Unit
4	1	Ball Mount
5	1	Adjustable Swivel Mount
HARDWARE KIT		
A	4	#8 Nylon Lock Nut
B	4	#8x1/2" Socket Cap Screw
C	4	Truss Head Screw

TOOLS

- Drill
- 1/8" Drill Bit
- Step Up Bit
- Deburring Tool
- Phillips Head Bit
- T30 Torx
- 9/64" Allen Wrench
- 11/32" Socket or Wrench
- 10mm Socket
- Marker

Torque Specs:

SIZE (STANDARD)	GRADE 5	GRADE 8
5/16"	15 ft/lbs	20 ft/lbs
3/8"	30 ft/lbs	35 ft/lbs
7/16"	45 ft/lbs	60 ft/lbs
1/2"	65 ft/lbs	90 ft/lbs
9/16"	95 ft/lbs	130 ft/lbs
5/8"	135 ft/lbs	175 ft/lbs
3/4"	185 ft/lbs	290 ft/lbs

SIZE (METRIC)	CLASS 8.8	CLASS 10.9
6MM	5 ft/lbs	9 ft/lbs
8MM	18 ft/lbs	23 ft/lbs
10MM	32 ft/lbs	45 ft/lbs
12MM	55 ft/lbs	75 ft/lbs
14MM	85 ft/lbs	120 ft/lbs
16MM	130 ft/lbs	165 ft/lbs
18MM	170 ft/lbs	240 ft/lbs



BEFORE YOU BEGIN

If you do not feel comfortable installing your **Thumper Fab** Phone Mount, please see your nearest CF Moto® Dealer for installation.

INSTALLATION INSTRUCTIONS

Installation Preparation

Installation is the same for driver and passenger side brackets. Charging and non charging mounts install the same, the charging mount will require wiring instructions included at end of this manual. Fasten the ball mount the to phone mount bracket using 4 X #8x1/2" socket cap screws and 4 X #8 nylon lock nuts. Tighten using a 9/64 allen wrench and an 11/32" socket (**FIG 1**).



FIG 1 - Fasten Ball Mount to Mount Bracket

Loosely fasten the adjustable swivel mount to the ball mount and the phone charging unit. Final adjustment can be done when bracket is secured in position (**FIG 2**).



FIG 2 - Assemble Adjustable Swivel Mount and Phone Charging Unit

INSTALLATION INSTRUCTIONS

Installation Preparation

Place the phone charger mount bracket in position on the dash and mark the mount holes with a marker to be pre drilled prior to installation. It is a good idea to have the windshield closed when marking the holes to make sure that when the phone is in the desired position it does not contact the windshield (**FIG 3**).



FIG 3 - Mark holes to be drilled

Drill the marked holes using an 1/8" drill bit (**FIG 4**).



FIG 4 - Drill Marked Holes

INSTALLATION INSTRUCTIONS

Installation Preparation

(If installing a phone with charging mount only) use the 1/8" drill bit to drill a hole centered between all mounting holes. Step the hole up until the connector on the wiring harness attached to charging mount can slip through the hole (**FIG 5 & FIG 6**).



FIG 5 & FIG 6 - Drill hole for Wiring Harness (CHARGING INSTALL ONLY!)

Use a deburring tool to clean the edges of the hole for a clean finish (**FIG 7**).



FIG 7 - Clean hole with Deburring Tool

INSTALLATION INSTRUCTIONS

Installation Preparation

Remove the 5 screws that fasten the front of the dash under the hood section using a T30 Torx (**FIG 8**).



FIG 8 - Remove 5 X OEM screws with T30 Torx

Route the wiring harness provided in the kit through the dash into the under hood section in the path shown below (**FIG 9**).



FIG 9 - Route wiring to the Hood Section of Vehicle

INSTALLATION INSTRUCTIONS

Installation

Connect the black lead of the wiring harness to the middle terminal of the under-hood busbar and connect the red lead to the far right terminal using a 10mm socket (**FIG 10**).

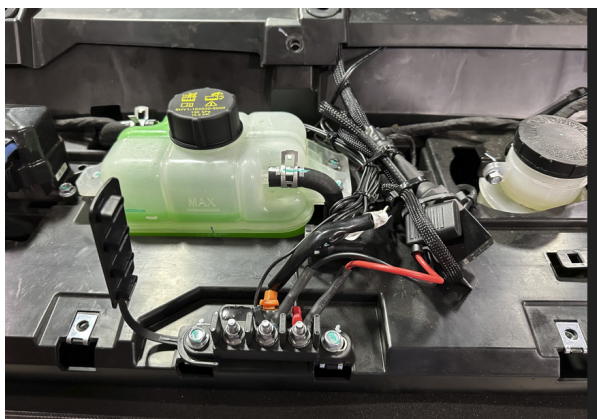


FIG 10 - Connect Harness to Busbar

Fasten the mount bracket to the dash using 4 X truss screws in the pre-drilled pilot holes. Tighten using a drill and a phillips head bit (**FIG 11 & FIG 12**).



FIG 11 & FIG 12 - Fasten Mount Bracket to the Dash

INSTALLATION INSTRUCTIONS

Installation

The busbar located under the hood will be plugged into a “dummy” plug which does not allow the busbar to be powered when the key is on. Unplug the busbar from this plug (**FIG 13**).

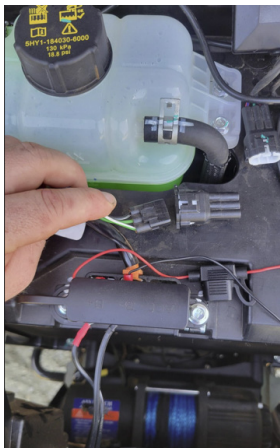


FIG 13 - Unplug Busbar from “Dummy” plug

Plug the busbar into the harness located next to the coolant overflow reservoir. With the key on, the far right terminal should now have power and the center terminal can be used as a ground (**FIG 14**).

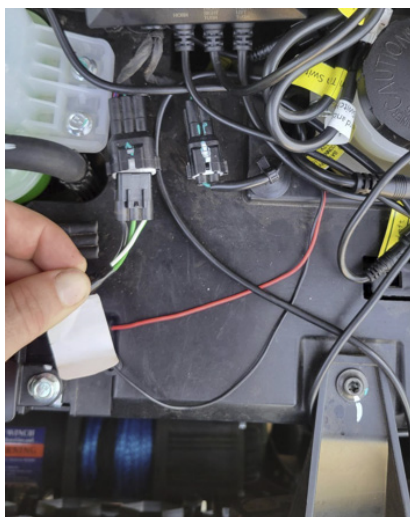


FIG 14 - Plug in Busbar

INSTALLATION INSTRUCTIONS

PRODUCT DISCLAIMER

The installation of products sold or manufactured by Thumper Fabrication, LLC (Thumper Fab) including, but not limited to suspension components such as lift kits, audio roofs, roll cages, frame stiffener kits, and tires that exceed the original specifications for the vehicle, may change the vehicle's center of gravity and handling characteristics both on- and off-road. You are aware that the installation of tires that are larger than original vehicle specifications may reduce the effectiveness of the braking system. Use of these products may place added stress to the original factory vehicle components which could cause them to weaken or possibly fail.

Products sold or manufactured by Thumper Fab are intended for off-road use only. Operation of a vehicle modified with these products on a road could result in serious bodily injury or death, and such operation may violate the laws of your state or municipality. You agree to operate your vehicle exclusively in the manner intended by the vehicle manufacturer. You agree that failure to safely and reasonably operate your vehicle could result in serious bodily injury or death, and that, as a result of installation of this product(s) to your vehicle, extreme care must be taken to prevent vehicle rollover or loss of control, which may be more likely to occur as a result of said modifications. You will avoid unsafe maneuvers, including sudden sharp turns or other abrupt maneuvers, which could make a vehicular accident more likely. You understand that Thumper Fab is not responsible or liable for any damages or any injuries to yourself or your passengers that could occur upon possible accidents due to driver error, incorrect installations, bad judgment, incompatibility with other aftermarket accessories or natural disasters to the fullest extent allowable by law. You will have all vehicle occupants fasten seatbelts, if equipped, and wear proper safety equipment, such as DOT approved helmet and eye protection prior to operating the vehicle. You understand and acknowledge that failure to wear proper safety equipment may increase the risk of serious bodily injury or death to yourself and any passengers.

Proper installation of products sold or manufactured by Thumper Fab requires knowledge of the factory recommended procedures for removal and installation of original equipment components. Installation of these products without proper knowledge and experience may affect the performance of these components and the safety of the vehicle and cause serious bodily injury or death. It is strongly recommended that a certified mechanic familiar with the installation of similar components perform the product(s) installation.

Prior to installing any products sold or manufactured by Thumper Fab, you will perform or cause to be performed an inspection of their vehicle to confirm its condition is suitable for the installation of these products. A proper inspection of the vehicle includes confirmation that the vehicle has not been in a collision and is free of corrosion. If the vehicle is suspected to have been in a collision or misused, or is otherwise unsuitable for modification, you will not install the product(s). You will continue to inspect the vehicle prior to each use to confirm its condition is suitable for its intended use, and you acknowledge that the failure to do so may result in serious bodily injury or death, as well as damage to the vehicle itself.

You will install any warning labels provided with the product so it may be prominently seen by yourself and all passengers. You will notify all passengers of the modifications performed to your vehicle prior to operation.

Insurance companies may handle coverage of a modified vehicle differently. Please check with your insurance carrier prior to modifying the vehicle to ensure your coverage remains sufficient. Installation of this product(s) may void your vehicle warranty. If this is a concern, please check with the manufacturer or dealer before purchase or installation of this product(s).



Thumper Fab

5103 Elysian Fields Rd, Marshall, TX 75672

Customer Service: 903-472-0928

www.thumperfab.com