

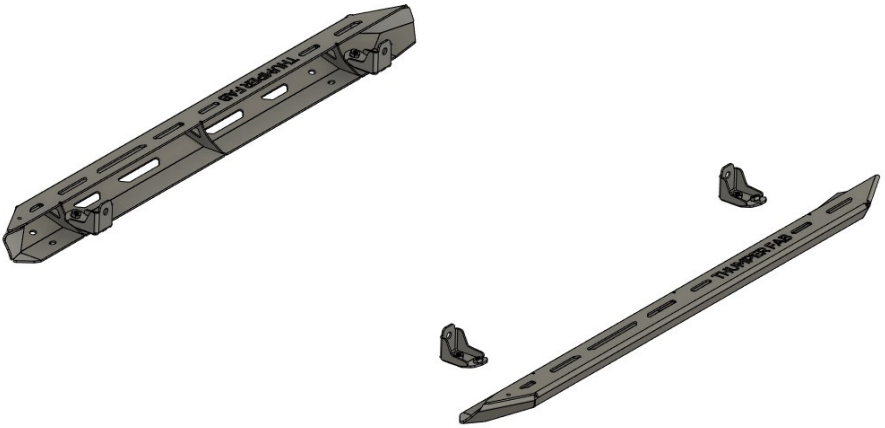


THUMPER FAB

Aluminum Audio Roofs ♦ Roll Cages ♦ UTV Accessories

John Deere Gator NERF RAILS (2 Seat)

SKU: TF250701



Thumper Fab

5103 Elysian Fields Rd, Marshall, Tx 75672

Customer Service: 903-472-0928

www.thumperfab.com

John Deere Gator NERF RAILS (2 Seat)



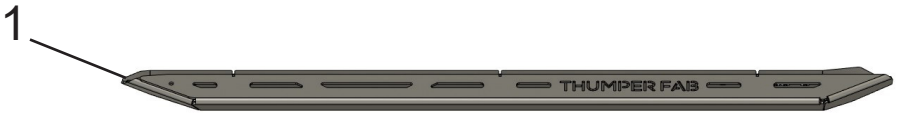
SKU: TF250701

PARTS

REF	QTY	DESCRIPTION
1	1	MAIN NERF RAIL BODY - DRIVER (D)
2	1	MAIN NERF RAIL BODY - PASSENGER (P)
5	4	MOUNT BRACKET
HARDWARE KIT		
A	4	M10-1.5MM X 60MM FLANGE BOLT
B	4	M10-1.5 NYLON FLANGE LOCK NUT
C	8	M8-1.25MM X 20MM BUTTON HEAD HEX DRIVE SCREWS
D	8	M8 ZINC-PLATED STEEL SPLIT LOCK WASHER

TOOLS

- Drill
- Dremel tool
- T 40 Torx
- 4mm Allen
- 5mm Allen
- 10mm Socket
- 13mm Socket
- 17mm Socket



BEFORE YOU BEGIN

If you do not feel comfortable installing your **Thumper Fab** INSERT PRODUCT, please see your nearest INSERT BRAND® Dealer for

INSTALLATION INSTRUCTIONS

Removing oem hardware

First, start by removing all OEM hardware in order to remove the two plastic pieces that span from the front wheel well to the rear of cab. FOR CAB MODEL, the doors will need to be removed as well as the door hinges before you are able to remove the front plastics. Only completely remove the rear piece of plastic first. Leave the front piece in place for now.



INSTALLATION INSTRUCTIONS

Next, attach a mount bracket to the unit at the rear mount point on the chassis using the M10 hardware, shown below. Leave hardware loose for now.



Then attach another mount bracket to the front mount point of the nerf rail using the M8 Button head screws and lock washers. Leave this hardware loose as well.



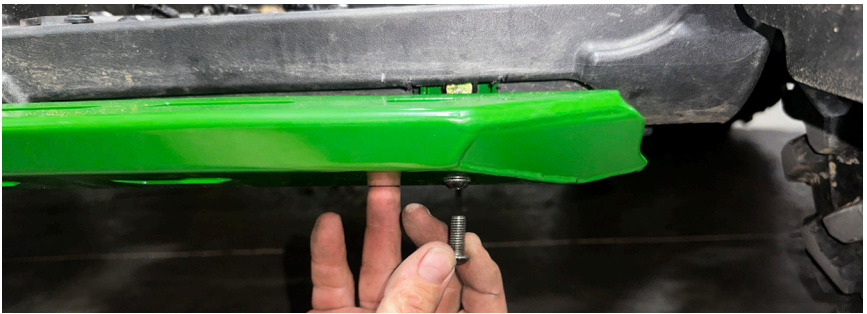
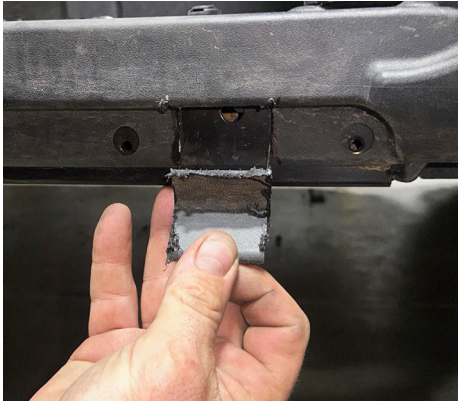
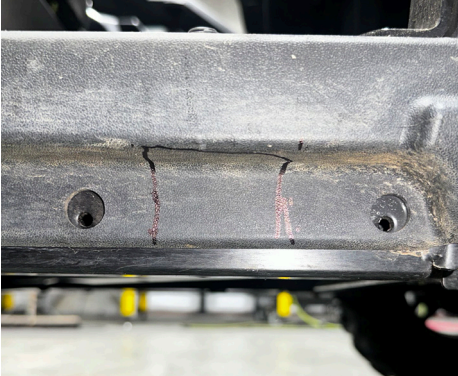
INSTALLATION INSTRUCTIONS



Next, attach the nerf rail to the rear mount that was previously attached to the unit. Then rotate the nerf rail upward until the front mount bracket is close to being in place, mark the plastics in order to cut them to clear the front mount bracket. After the plastic has been marked, cut the plastic to clear the front mount. Then remove the bracket from the nerf rail and attach it to the unit just as was done for the rear bracket. Once the front bracket is attached, you can then re-attach the nerf rail to the front bracket. See below.



INSTALLATION INSTRUCTIONS



Next, place the rear plastics back into place in order to mark for cutting as well. Once in place, mark as shown below. Cut along you marks, then re-install the plastics. Make sure all hardware for the nerf rails is tight, then replace OEM hardware that fastens the plastics.

INSTALLATION INSTRUCTIONS





THUMPER FAB

Thumper Fab

5103 Elysian Fields Rd, Marshall, Tx 75672
Customer Service: 903-472-0928

www.thumperfab.com