

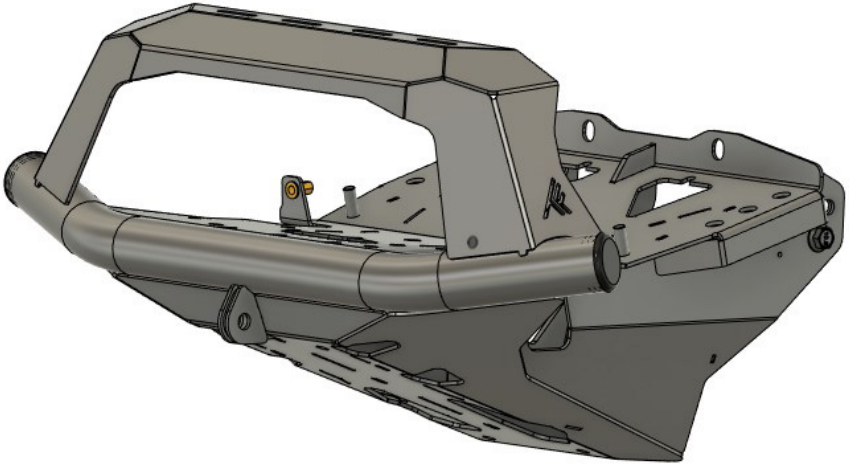


THUMPER FAB

Aluminum Audio Roofs ♦ Roll Cages ♦ UTV Accessories

CanAm Maverick R Front Winch Bumper

SKU: TF240501



Thumper Fab

5103 Elysian Fields Rd, Marshall, Tx 75672

Customer Service: 903-472-0928

www.thumperfab.com

CanAm Maverick R Front Winch Bumper



SKU: TF240501

PARTS

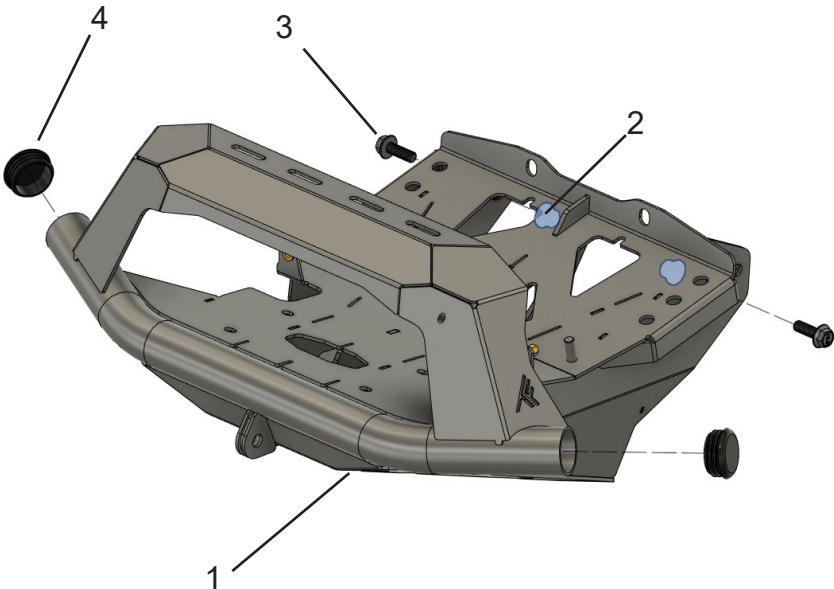
REF	QTY	DESCRIPTION
1	1	BUMPER ASSEMBLY
HARDWARE		
2	2	M10 Flanged Head Lock Nut
3	4	M10 x 1.50mm, 30mm, Flanged Head Bolt
4	2	PLASTIC PLUG

TOOLS

- 9/64" Allen Wrench
- 11/32" Wrench or Socket
- Phillips Head Screwdriver
- T30 Torx
- Dremel/Die Grinder

BEFORE YOU BEGIN

If you do not feel comfortable installing your **Thumper Fab** NERF RAILS, please see your nearest Polaris Dealer for installation.



INSTALLATION INSTRUCTIONS

Remove OEM Bulkhead

Start by using a jack to lift the front end of the unit off the ground. Then loosen the several torx screws attaching the plastics to each other on either side of the bulkhead. (FIG. 1)



FIG 1

Next, remove the sway bar by first disconnecting it at the links, then remove the hardware attaching it to the top of the oem bulkhead. (FIG. 2 & 3)



FIG 2

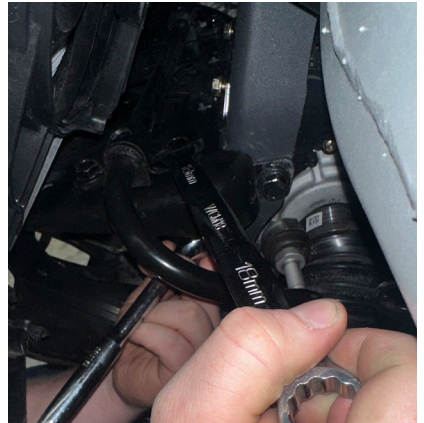


FIG 3

INSTALLATION INSTRUCTIONS

Next you can then gain access from either side of the unit to loosen the two M8 screws attaching the bulkhead to the front of the chassis using either your 13mm wrench or socket (FIG. 4), and then remove the oem 10mm bolts located on either side of the bulkhead using the 15mm wrench and/or socket. (FIG. 5)



FIG 4



FIG 5

After that, you can then move onto loosening the front control arm bolts using an impact and a 21mm socket. (FIG. 6)



FIG 6

After all hardware has been removed, you will need to lift the oem bulkhead up and then out. There are some tabs on the chassis that allow you to hang the bulkhead in place so that you can install all of the hardware that attaches it. There will also be some rubber grommets on the bottom of the radiator that interface with pins on the top of the bulkhead. Be aware of these when removing the oem bulkhead, as you will need these in place when installing the new bumper.

INSTALLATION INSTRUCTIONS

Installing the winch bumper

If you are using a winch, now is the time to bolt the winch to the new front winch bumper.

Next, you will need to lift the bumper up into place and hang it on the tabs that were previously mentioned. Having someone help lift the front plastics and radiator up so that you are able to place the rubber grommets over the pins on the bumper is highly recommended. After the bumper is in place, install the new M10 bolts and locknuts provided in the kit on the sides of the bumper and chassis. Next, re-install the oem M8 bolts into the front of the bumper and into the chassis. Then, reinstall the control arm bolts. Having someone lift up and out on the wheel will help re-align the mount holes and make it easier to re-install the control arm bolts. After this has been done, you can then re-install the sway bar, re-connect the sway bar links, and make sure all hardware is tight.



FIG 7

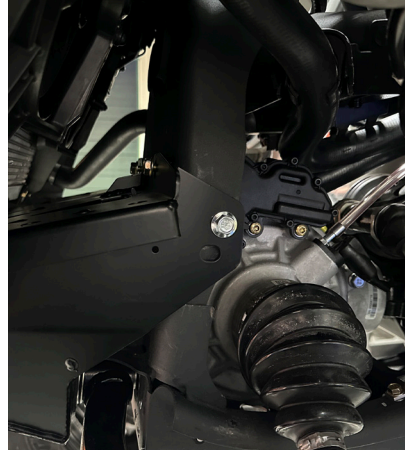


FIG 8



FIG 9

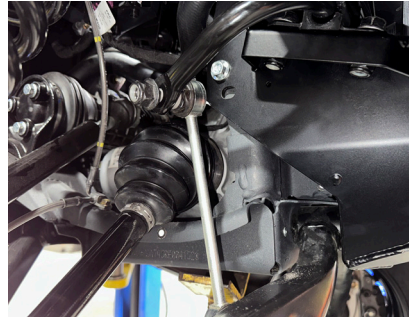


FIG 10



THUMPER FAB

Thumper Fab

5103 Elysian Fields Rd, Marshall, Tx 75672

Customer Service: 903-472-0928

www.thumperfab.com