



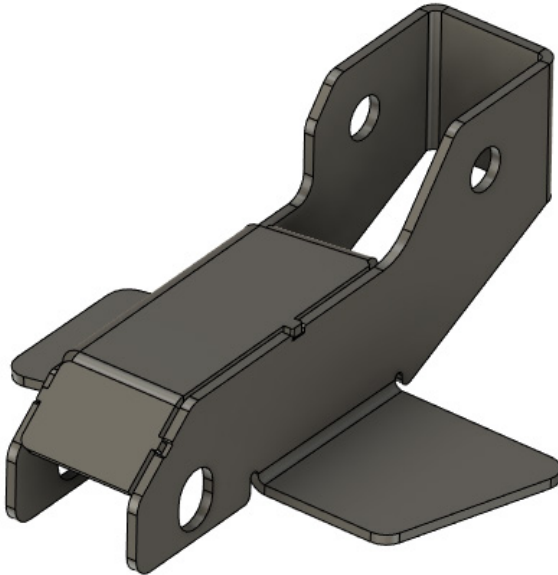
THUMPER FAB

Aluminum Audio Roofs ♦ Roll Cages ♦ UTV Accessories

Ranger XD 1500

Bed Actuator Relocation Bracket

SKU: TF230006



Thumper Fab

5103 Elysian Fields Rd, Marshall, TX 75672

Customer Service: 903-472-0928

www.thumperfab.com

Ver. 1124

Ranger XD 1500 Bed Actuator Relocation Bracket

SKU: TF230006



PARTS

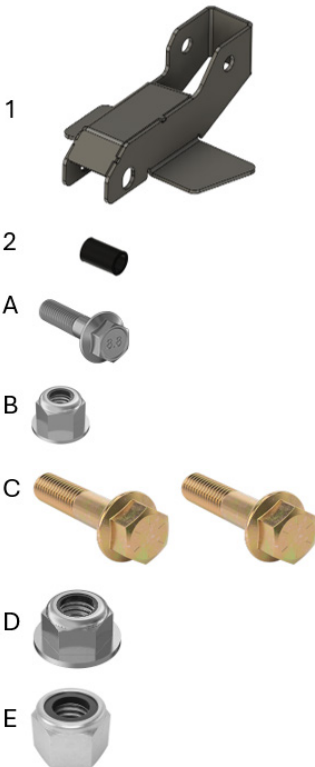
REF	QTY	DESCRIPTION
1	1	Bed Actuator Relocation Bracket
2	1	Spacer
HARDWARE KIT		
A	1	M8x20mm Flange Head Bolt
B	1	M8 Flange Nylon Lock Nut
C	2	1/2" x 2-1/4" Flange Head Bolt
D	1	1/2" Flange Nylon Lock Nut
E	1	1/2" Nylon Lock Nut

TOOLS

- Needle Nose Pliers
- Panel Clip Pliers
- Drill
- 11/32" Drill Bit
- 13mm Socket and Wrench
- 3/4" Socket and Wrench

BEFORE YOU BEGIN

If you do not feel comfortable installing your Thumper Fab Actuator Relocator, please see your nearest Polaris® Dealer for installation.



Torque Specs:

SIZE (STANDARD)	GRADE 5	GRADE 8	SIZE (METRIC)	CLASS 8.8	CLASS 10.9
5/16"	15 ft/lbs	20 ft/lbs	6MM	5 ft/lbs	9 ft/lbs
3/8"	30 ft/lbs	35 ft/lbs	8MM	18 ft/lbs	23 ft/lbs
7/16"	45 ft/lbs	60 ft/lbs	10MM	32 ft/lbs	45 ft/lbs
1/2"	65 ft/lbs	90 ft/lbs	12MM	55 ft/lbs	75 ft/lbs
9/16"	95 ft/lbs	130 ft/lbs	14MM	85 ft/lbs	120 ft/lbs
5/8"	135 ft/lbs	175 ft/lbs	16MM	130 ft/lbs	165 ft/lbs
3/4"	185 ft/lbs	280 ft/lbs	18MM	170 ft/lbs	240 ft/lbs

INSTALLATION INSTRUCTIONS

Installation Preparation

Tilt the bed back and using pliers remove the panel clips fastening the rear inner fender liner (on the drivers side) to the vehicle to gain access to the bed lift actuator (**FIG 1**).



FIG 1 - Remove Inner Fender Liner

Use needle nose pliers to remove the cotter pin to remove the clevis pin that fastens the bed actuator to the lower mount (**FIG 2**).



FIG 2 - Remove Clevis from Bed Actuator Lower Mount

INSTALLATION INSTRUCTIONS

Installation Preparation

Disconnect the electrical connector from the bed lift actuator and remove the actuator from vehicle by disconnecting the cotter pin and clevis that fasten actuator to the bed (**FIG 3 & FIG 4**).

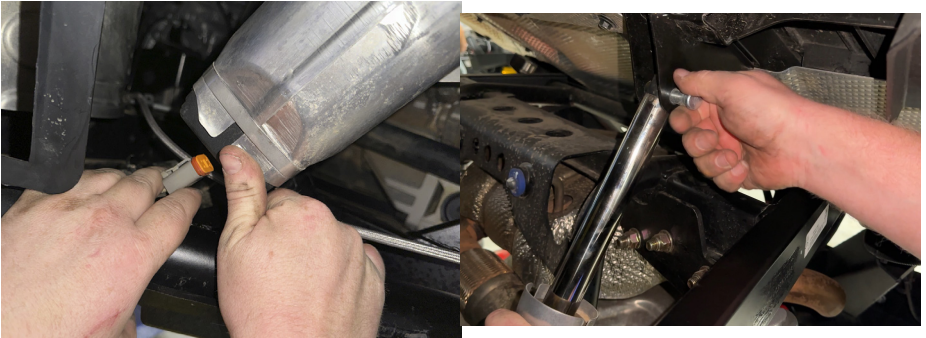


FIG 3 & FIG 4 - Remove Bed Lift Actuator from Vehicle

Place the relocation bracket into position over the factory actuator mount. Fasten to frame using 1 X 1/2" x 2-1/4" flange head bolt (C), 1 X 1/2" nylon lock nut (E) while placing the spacer inbetween the OEM actuator mount. Tighten using a 3/4" socket and wrench (**FIG 5 & FIG 6**).

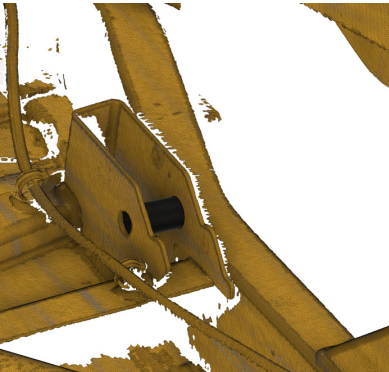


FIG 5 & FIG 6 - Mount Relocation Bracket into Position

INSTALLATION INSTRUCTIONS

Installation Preparation

Use the relocation bracket as a template to drill using a 11/32" drill bit (FIG 7 & FIG 8).

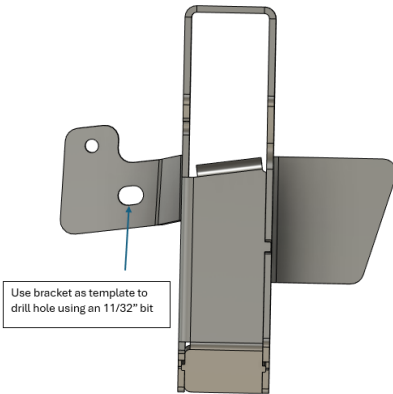


FIG 7 & FIG 8 - Drill hole in frame using Bracket as a template

Fasten the relocation bracket to the frame using 1 X M8x20mm flange head bolt and 1 X flange nylon lock nut. Tighten using a 13mm socket and wrench (FIG 9).



FIG 9 - Mount the Relocation Bracket to the Frame

INSTALLATION INSTRUCTIONS

Installation Preparation

Insert brake line clamp in smaller hole on relocation bracket (**FIG 10**).

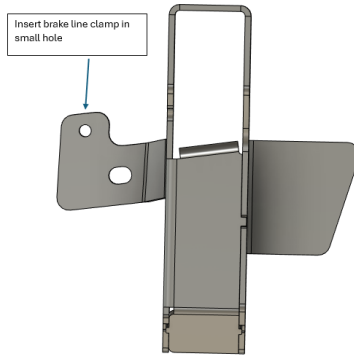


FIG 10 - Insert Brake Line Clamp into small hole on Bracket

Plug in the electrical connector for the actuator and reinstall the bed actuator by fastening to relocation bracket using 1 X 1/2" x 2-1/4" flange head bolt and 1 X 1/2" flange nylon lock nut. Use a 3/4" socket and wrench to tighten. **Do not over tighten, bracket will bend if bolt is over tightened.** Reattach the actuator to the bed using the OEM hardware. Actuator cylinder may need to be operated either up on down using the switch inside the vehicle to align mount holes on bed frame. Reinstall the rear inner fender liner using OEM panel clips (**FIG 11 & FIG 12**).



FIG 11 & FIG 12 - Mount the actuator back into vehicle

INSTALLATION INSTRUCTIONS

PRODUCT DISCLAIMER

The installation of products sold or manufactured by Thumper Fabrication, LLC (Thumper Fab) including, but not limited to suspension components such as lift kits, audio roofs, roll cages, frame stiffener kits, and tires that exceed the original specifications for the vehicle, may change the vehicle's center of gravity and handling characteristics both on- and off-road. You are aware that the installation of tires that are larger than original vehicle specifications may reduce the effectiveness of the braking system. Use of these products may place added stress to the original factory vehicle components which could cause them to weaken or possibly fail.

Products sold or manufactured by Thumper Fab are intended for off-road use only. Operation of a vehicle modified with these products on a road could result in serious bodily injury or death, and such operation may violate the laws of your state or municipality. You agree to operate your vehicle exclusively in the manner intended by the vehicle manufacturer. You agree that failure to safely and reasonably operate your vehicle could result in serious bodily injury or death, and that, as a result of installation of this product(s) to your vehicle, extreme care must be taken to prevent vehicle rollover or loss of control, which may be more likely to occur as a result of said modifications. You will avoid unsafe maneuvers, including sudden sharp turns or other abrupt maneuvers, which could make a vehicular accident more likely. You understand that Thumper Fab is not responsible or liable for any damages or any injuries to yourself or your passengers that could occur upon possible accidents due to driver error, incorrect installations, bad judgment, incompatibility with other aftermarket accessories or natural disasters to the fullest extent allowable by law. You will have all vehicle occupants fasten seatbelts, if equipped, and wear proper safety equipment, such as DOT approved helmet and eye protection prior to operating the vehicle. You understand and acknowledge that failure to wear proper safety equipment may increase the risk of serious bodily injury or death to yourself and any passengers.

Proper installation of products sold or manufactured by Thumper Fab requires knowledge of the factory recommended procedures for removal and installation of original equipment components. Installation of these products without proper knowledge and experience may affect the performance of these components and the safety of the vehicle and cause serious bodily injury or death. It is strongly recommended that a certified mechanic familiar with the installation of similar components perform the product(s) installation.

Prior to installing any products sold or manufactured by Thumper Fab, you will perform or cause to be performed an inspection of their vehicle to confirm its condition is suitable for the installation of these products. A proper inspection of the vehicle includes confirmation that the vehicle has not been in a collision and is free of corrosion. If the vehicle is suspected to have been in a collision or misused, or is otherwise unsuitable for modification, you will not install the product(s). You will continue to inspect the vehicle prior to each use to confirm its condition is suitable for its intended use, and you acknowledge that the failure to do so may result in serious bodily injury or death, as well as damage to the vehicle itself.

You will install any warning labels provided with the product so it may be prominently seen by yourself and all passengers. You will notify all passengers of the modifications performed to your vehicle prior to operation.

Insurance companies may handle coverage of a modified vehicle differently. Please check with your insurance carrier prior to modifying the vehicle to ensure your coverage remains sufficient. Installation of this product(s) may void your vehicle warranty. If this is a concern, please check with the manufacturer or dealer before purchase or installation of this product(s).



THUMPER FAB

Thumper Fab

5103 Elysian Fields Rd, Marshall, TX 75672

Customer Service: 903-472-0928

www.thumperfab.com