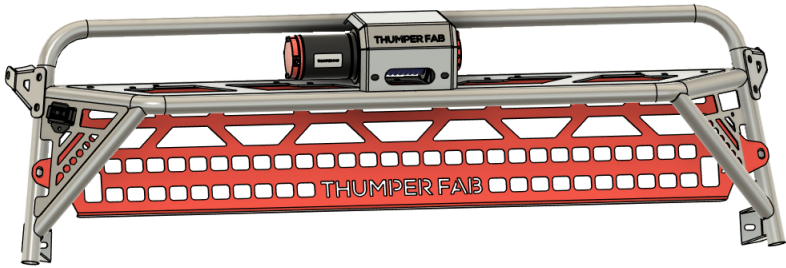


Polaris Xpedition
Headache Rack

SKU: TF201601



Thumper Fab
5103 Elysian Fields Rd, Marshall, TX 75672
Customer Service: 903-472-0928

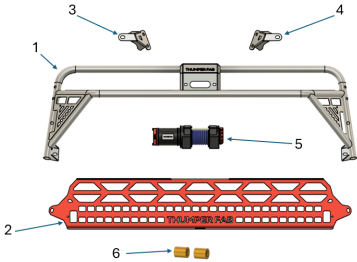
Polaris Xpedition Headache Rack

SKU: TF201601



PARTS

REF	QTY	DESCRIPTION
1	1	Headache Rack Frame
2	1	Rear Panel
3	1	Upper Mount Bracket - Driver
4	1	Upper Mount Bracket - Passenger
5	1	Winch
6	2	Spacers
HARDWARE KIT		
A	10	M8 Flange Nylon Lock Nut
B	2	M8x25mm T Slot Stud
C	2	M8x20mm Flange Head Bolt
D	2	M12x70mm Flange Head Bolts
E	2	Round Tubing Plugs
F	4	M6x16mm Flange Head Bolts
G	4	M6 Split Lock Washer
H	4	M8x50mm Flange Head Bolt
I	4	M8x20mm Carriage Bolts
J	2	Self Tapping Screws



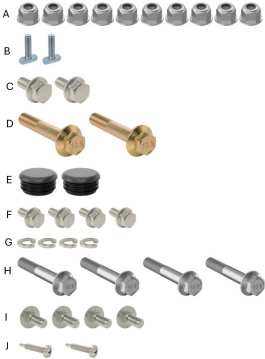
TOOLS

- 10mm Socket and Wrench
- 13mm Socket and Wrench
- 15mm Socket and Wrench
- 16mm Socket and Wrench
- 18mm Socket and Wrench
- Flathead Screwdriver
- Panel Clip Removal Tool
- T40 Torx Bit

Torque Specs:

SIZE (STANDARD)	GRADE 5	GRADE 8
5/16"	15 ft/lbs	20 ft/lbs
3/8"	30 ft/lbs	35 ft/lbs
7/16"	45 ft/lbs	60 ft/lbs
1/2"	65 ft/lbs	90 ft/lbs
9/16"	95 ft/lbs	130 ft/lbs
5/8"	135 ft/lbs	175 ft/lbs
3/4"	185 ft/lbs	280 ft/lbs

SIZE (METRIC)	CLASS 8.8	CLASS 10.9
6MM	5 ft/lbs	9 ft/lbs
8MM	18 ft/lbs	23 ft/lbs
10MM	32 ft/lbs	45 ft/lbs
12MM	55 ft/lbs	75 ft/lbs
14MM	85 ft/lbs	120 ft/lbs
16MM	130 ft/lbs	165 ft/lbs
18MM	170 ft/lbs	240 ft/lbs



BEFORE YOU BEGIN

If you do not feel comfortable installing your **Thumper Fab** Headache Rack, please see your nearest Polaris® Dealer for installation.

INSTALLATION INSTRUCTIONS

Installation Preparation

Use a flathead screwdriver to remove the panel plug located behind the upper seat belt mount (**FIG 1**).



FIG 1 - Remove Panel Plug

Unfasten the seat belt from the seat belt bracket using a 18mm socket and wrench. You must use a short socket and ratchet to hold the nut on the back side of the seat belt mounting bracket (**FIG 2**).



FIG 2 - Unfasten Seat Belt from Vehicle Frame

INSTALLATION INSTRUCTIONS

Installation Preparation

Use a T40 Torx to remove the speakers in the upper rear corners and unplug wiring pigtail before setting them off to the side (**FIG 3 & FIG 4**).



FIG 3 & FIG 4 - Remove Rear Speakers

Use a panel clip removal tool to remove the panel clips and 3 X T40 Torx OEM bolts that fasten the rear upper inside panels inside the cab (**FIG 5 & FIG 6**).



FIG 5 & FIG 6 - Remove Panel Clips and Inside Rear Panel

INSTALLATION INSTRUCTIONS

Installation Preparation

Back the 2 X OEM bolts out of the window bar to gain access for lower mounting hardware using a 13mm socket (**FIG 7**).



FIG 7 - Back OEM Bolts out

Remove the outer panel clips in the bottom corners of the rear window (one on each side) (**FIG 8**).



FIG 8 - Remove Outer Panel Clips

INSTALLATION INSTRUCTIONS

Installation Preparation

Remove the 2 X OEM roll cage bolts using an 18mm socket as they will be replaced during the installation process. Be careful to hold the nut on the inside of the vehicle that the bolt is backing out of so that it does not drop into the cab area (**FIG 9**).



FIG 9 - Remove OEM Roll Cage Bolts

Insert the round tubing plugs in the ends of the headache rack frame (**FIG 10**).



FIG 10 - Insert Round Tubing Plugs

INSTALLATION INSTRUCTIONS

Installation Preparation

The rear panel may be a tight fit inside the headache rack frame and may require some maneuvering to get it in place. Insert the rear panel into the headache rack frame and fasten the rear panel to the rivet-nuts provided on the outer sides of the headache rack using 2 X M8x20mm flange head bolts. Tighten using a 13mm socket (**FIG 11 & FIG 12**).

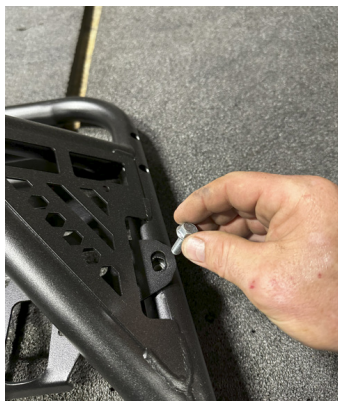


FIG 11 & FIG 12 - Install and fasten Rear Panel to Headache Rack Frame

Fasten the top portion of the rear panel to the headache rack frame using 4 X M8x20mm carriage bolts and 4 X M8 flange nylon lock nuts. Tighten using a 13mm wrench (**FIG 13**).



FIG 13 - Fasten top of Rear Panel to the Headache Rack Frame

INSTALLATION INSTRUCTIONS

Installation Preparation

Fasten the winch control switch to the headache rack assembly using the hardware provided in the winch box. The switch can be mounted either to the rear panel or to the welded headache rack frame as shown below (**FIG 14 & FIG 15**).



FIG 14 & FIG 15 - Fasten Winch Control Switch to the Headache Rack Assembly

Mount the fairlead to the headache rack frame using the hardware provided in the winch box (**FIG 16**).



FIG 16 - Fasten Fairlead to the Headache Rack Frame

INSTALLATION INSTRUCTIONS

Installation Preparation

Fasten the winch to the headache rack frame using 4 X M6x16mm flange head bolts and 4 X M6 split lock washer. Tighten using a 10mm socket (**FIG 17 & FIG 18**).



FIG 17 & FIG 18 - Fasten Winch to the Headache Rack Assembly

Insert 2 X M8x25mm T Slot Stud through the frame of the vehicle with the stud sticking towards the rear of the vehicle (**FIG 19**).



FIG 19 - Insert M8x25mm T-Slot Stud through the vehicle

INSTALLATION INSTRUCTIONS

Installation

With the help of a friend, place the headache rack frame up on the vehicle and loosley thread 2 X M8 flange nylon lock nuts onto the M8 T slot to hold the headache rack in place (**FIG 20 & FIG 21**).

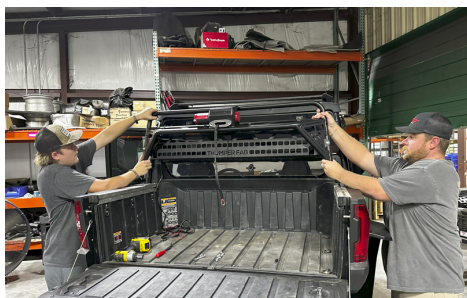


FIG 20 & FIG 21 - Loosley fasten Headache rack to Vehicle

Loosley fasten the upper mount brackets (driver and passenger) to the headache rack frame using 4 X M8x50mm flange head bolts and 4 X M8 flange nylon lock nuts (**FIG 22**).



FIG 22 - Fasten Upper Mount Brackets to the Headache Rack Frame

INSTALLATION INSTRUCTIONS

Installation

Fasten the upper mounts to the vehicle using 2 X M12x70mm flange head bolts, and 2 X spacers. Use a 16mm socket to fully tighten. Once tight, tighten all remaining headache rack hardware (**FIG 23 & FIG 24**).



FIG 23 & FIG 24 - Fasten Upper Mounts to Vehicle. Tighten all Hardware

Winch Wiring

Do not refer to wiring instructions contained in the winch box as it is not suitable for this application. Reference the following wiring diagram for wiring instructions for the winch (**FIG 25**).

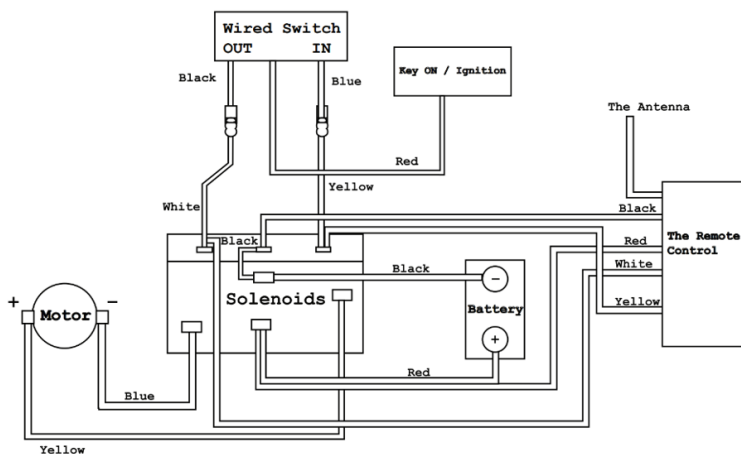


FIG 25 - Winch Wiring Diagram

INSTALLATION INSTRUCTIONS

Winch Wiring

Connect the Red (Positive) and Black (Negative) leads from the winch control box directly to the battery (**FIG 26**).



FIG 26 - Connect Winch Control Box to the Battery

Route the wiring harness from the winch control switch to the battery compartment and connect the blue and black bullet connectors to the blue and black wire coming from the winch control box (**FIG 27**).



FIG 27 - Connect Winch Control Switch

INSTALLATION INSTRUCTIONS

Winch Wiring

Connect the remaining wires coming from the winch control module to the winch. Connect the blue lead to the blue terminal on the winch and the yellow lead to the yellow terminal (**FIG 28**).



FIG 28 - Connect Winch Control Box to the Winch

Snip off the end of the small red wire coming from the winch control switch harness and connect to key on power after crimping a spade connector on the end of the wire. For our installation we tied into the cigarette lighter port (orange wire located near the center console). Clamp the blue connector on the orange wire going to cigarette lighter (**FIG 29 & FIG 30**).

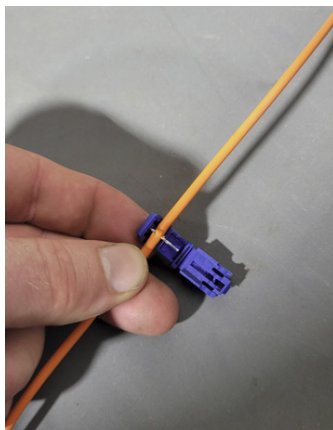


FIG 29 & FIG 30 - Connect Red (Ignition) wire to Key On Power

INSTALLATION INSTRUCTIONS

Winch Wiring

Insert the spade terminal into the blue connector as shown to provide key on power to the red wire (**FIG 31**).

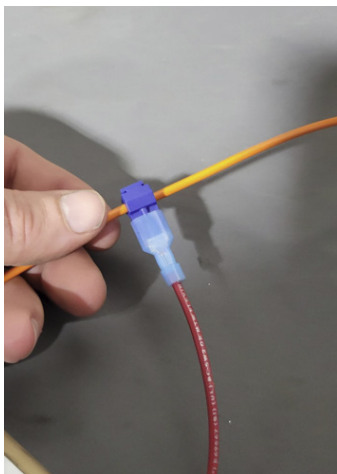


FIG 31 - Plug in Red wire to Orange wire

Fasten the winch control module next to the battery using 2 X self tapping screws (**FIG 32**).



FIG 32 - Fasten Winch Control Module

INSTALLATION INSTRUCTIONS

PRODUCT DISCLAIMER

The installation of products sold or manufactured by Thumper Fabrication, LLC (Thumper Fab) including, but not limited to suspension components such as lift kits, audio roofs, roll cages, frame stiffener kits, and tires that exceed the original specifications for the vehicle, may change the vehicle's center of gravity and handling characteristics both on- and off-road. You are aware that the installation of tires that are larger than original vehicle specifications may reduce the effectiveness of the braking system. Use of these products may place added stress to the original factory vehicle components which could cause them to weaken or possibly fail.

Products sold or manufactured by Thumper Fab are intended for off-road use only. Operation of a vehicle modified with these products on a road could result in serious bodily injury or death, and such operation may violate the laws of your state or municipality. You agree to operate your vehicle exclusively in the manner intended by the vehicle manufacturer. You agree that failure to safely and reasonably operate your vehicle could result in serious bodily injury or death, and that, as a result of installation of this product(s) to your vehicle, extreme care must be taken to prevent vehicle rollover or loss of control, which may be more likely to occur as a result of said modifications. You will avoid unsafe maneuvers, including sudden sharp turns or other abrupt maneuvers, which could make a vehicular accident more likely. You understand that Thumper Fab is not responsible or liable for any damages or any injuries to yourself or your passengers that could occur upon possible accidents due to driver error, incorrect installations, bad judgment, incompatibility with other aftermarket accessories or natural disasters to the fullest extent allowable by law. You will have all vehicle occupants fasten seatbelts, if equipped, and wear proper safety equipment, such as DOT approved helmet and eye protection prior to operating the vehicle. You understand and acknowledge that failure to wear proper safety equipment may increase the risk of serious bodily injury or death to yourself and any passengers.

Proper installation of products sold or manufactured by Thumper Fab requires knowledge of the factory recommended procedures for removal and installation of original equipment components. Installation of these products without proper knowledge and experience may affect the performance of these components and the safety of the vehicle and cause serious bodily injury or death. It is strongly recommended that a certified mechanic familiar with the installation of similar components perform the product(s) installation.

Prior to installing any products sold or manufactured by Thumper Fab, you will perform or cause to be performed an inspection of their vehicle to confirm its condition is suitable for the installation of these products. A proper inspection of the vehicle includes confirmation that the vehicle has not been in a collision and is free of corrosion. If the vehicle is suspected to have been in a collision or misused, or is otherwise unsuitable for modification, you will not install the product(s). You will continue to inspect the vehicle prior to each use to confirm its condition is suitable for its intended use, and you acknowledge that the failure to do so may result in serious bodily injury or death, as well as damage to the vehicle itself.

You will install any warning labels provided with the product so it may be prominently seen by yourself and all passengers. You will notify all passengers of the modifications performed to your vehicle prior to operation.

Insurance companies may handle coverage of a modified vehicle differently. Please check with your insurance carrier prior to modifying the vehicle to ensure your coverage remains sufficient. Installation of this product(s) may void your vehicle warranty. If this is a concern, please check with the manufacturer or dealer before purchase or installation of this product(s).



Thumper Fab

5103 Elysian Fields Rd, Marshall, TX 75672

Customer Service: 903-472-0928

www.thumperfab.com