

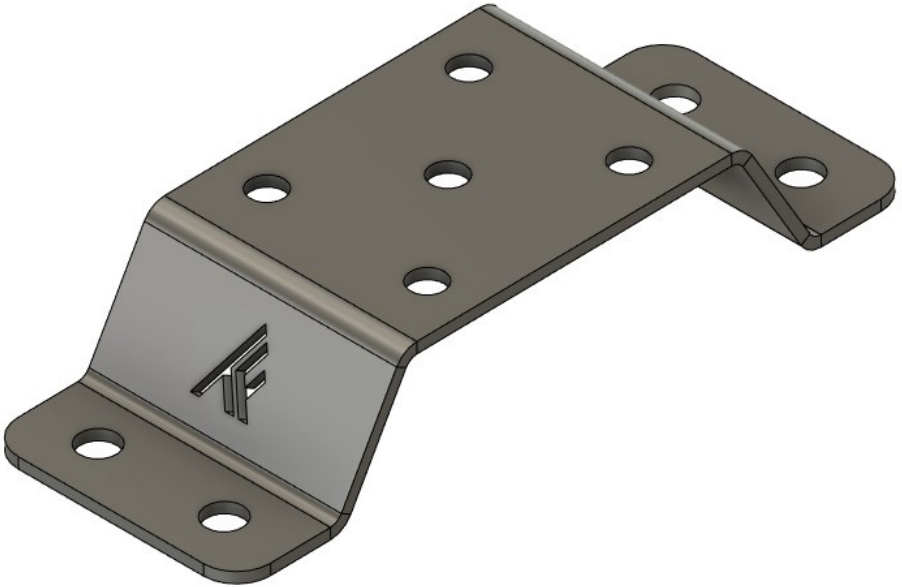


THUMPER FAB

Aluminum Audio Roofs ♦ Roll Cages ♦ UTV Accessories

Polaris Xpedition **Cell Phone Charger/Mount**

SKU: TF200901



Thumper Fab

5103 Elysian Fields Rd, Marshall, Tx 75672

Customer Service: 903-472-0928

www.thumperfab.com

Polaris Xpedition

Cell Phone Charger/Mount

SKU: TF200901



PARTS

REF	QTY	DESCRIPTION
1	1	TF Mount Base Plate
2	1	Cell Phone Charge/Mount
HARDWARE		
9	4	#8-32 x 1/2 Socket Cap Screw
10	4	#8-32 Nylon Insert Lock Nut
11	4	#14 x 3/4" Truss Head Phillips Screw

TOOLS

- 9/64" Allen Wrench
- 11/32" Wrench or Socket
- Phillips Head Screwdriver
- Drille
- 1/8" Drill Bit

BEFORE YOU BEGIN

If you do not feel comfortable installing your Thumper Fab Cell Phone Charger/Mount, please see your nearest Polaris Dealer for installation.

INSTALLATION INSTRUCTIONS

Assembling the charger/mount and the TF Mount Base Plate

Begin the installation by pre-assembling the phone charger/mount to the TF Mount Base Plate. You will use (4) of the #8-32 Screws and (4) #8-32 Locknuts. With these screws, attach the charger/mount pedestal to the TF Mount Base Plate. The tools you will use are the 9/64" hex/ allen wrench and the 11/32" wrench or socket. (FIG. 1 & 2) See below.



FIG 1



FIG 2

Next, fasten the charger/mount to the pedestal. (FIG. 3 & 4) See below.



FIG 3



FIG 4

INSTALLATION INSTRUCTIONS

Mount Placement on Dash

Place cell phone mount assembly onto dash and use the 4 holes in the TF Mount Base Plate to transfer/mark the holes, then drill pilot holes in all 4 marked places. (FIG 5 - 8)



FIG 5 (Driver Side Placement)



FIG 6 (Passenger Side Placement)



FIG 7



FIG 8

Next, with a phillips screw driver, fasten the charger/mount to the dash with the (4) phillips head screws provided in the kit. (Fig 9 & 10)



FIG 9



FIG 10

INSTALLATION INSTRUCTIONS

Trimming Plastic for Wire

In order to hide the wire coming from the charger, you will need to cut a small notch into the side of the center dash section. To do this, you will need to remove this part of the dash completely, cut the notch, then re-install after you have ran the wire underneath it.

Start by removing the windshield latch. To do this you will need to remove the (3) hex head bolts and the (2) push pins that fasten it. (Fig 11)

Before completely removing the plastic, determine where the notch need to be placed in order to hide the wire. Then remove the plastic and cut the notch as shown. (Fig 12)



FIG 11

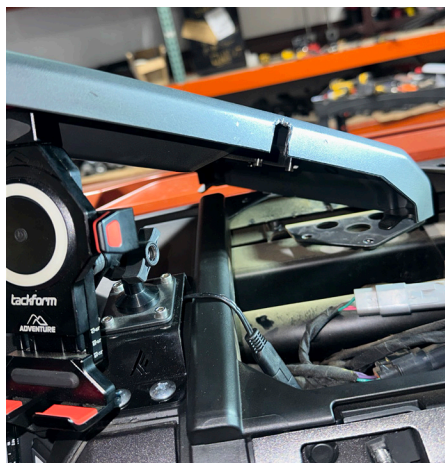


FIG 12

Before re-installing the plastic, run the extension wire from the charger over to the glove box. Be sure to plug in all connections before replacing the plastic dash piece back in to place. (Fig 13-14)

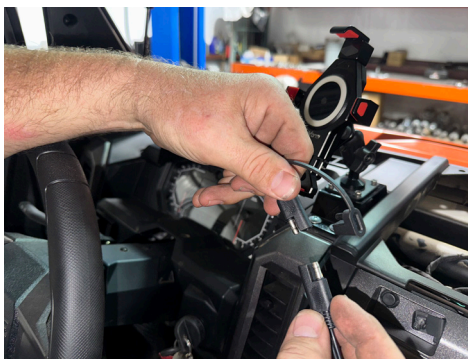


FIG 13

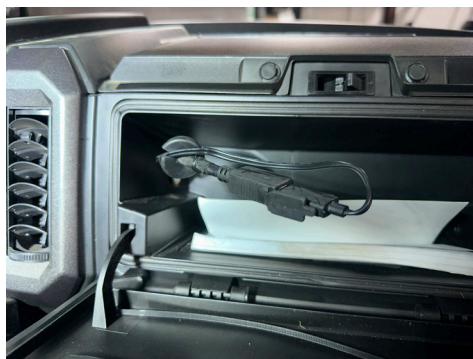


FIG 14

INSTALLATION INSTRUCTIONS

Re-installing Center Plastic

After the wire has been ran and connections made, replace the center dash section and then replace the hardware and push pins. This will complete the installation of your cell phone mount(s).



Thumper Fab

5103 Elysian Fields Rd, Marshall, Tx 75672

Customer Service: 903-472-0928

www.thumperfab.com