

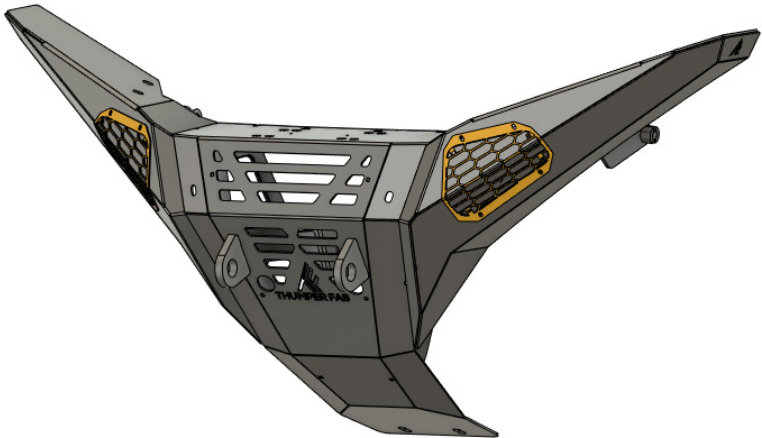


THUMPER FAB

Aluminum Audio Roofs ♦ Roll Cages ♦ UTV Accessories

Polaris Xpedition **Front Winch Bumper**

SKU: TF200501



Thumper Fab

5103 Elysian Fields Rd, Marshall, TX 75672

Customer Service: 903-472-0928

www.thumperfab.com

Ver. 0524

Polaris Xpedition Front Winch Bumper

SKU: TF200501



PARTS

REF	QTY	DESCRIPTION
1	1	Main Bumper Body
2	1	Driver Upper Mount Bracket
3	1	Passenger Upper Mount Bracket
4	1	Middle Mount
5	1	Driver Light Bar Cover
6	1	Passenger Light Bar Cover
7	1	Driver Hole Cover
8	1	Passenger Hole Cover
9	1	Driver Recessed Light Mount
10	1	Passenger Recessed Light Mount
HARDWARE KIT		
A	4	M10 x 30mm Flange Head Bolts
B	2	M10 x 60mm Flange Head Bolts
C	2	M10 Flange Nylon Lock Nuts
D	8	M8 x 25mm Flange Head Bolts
E	4	M8 Flange Nylon Lock Nuts
F	16	#8-32 Nylon Lock Nuts
G	16	#8-32 x 3/4" Socket Cap Screws

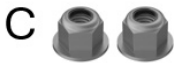
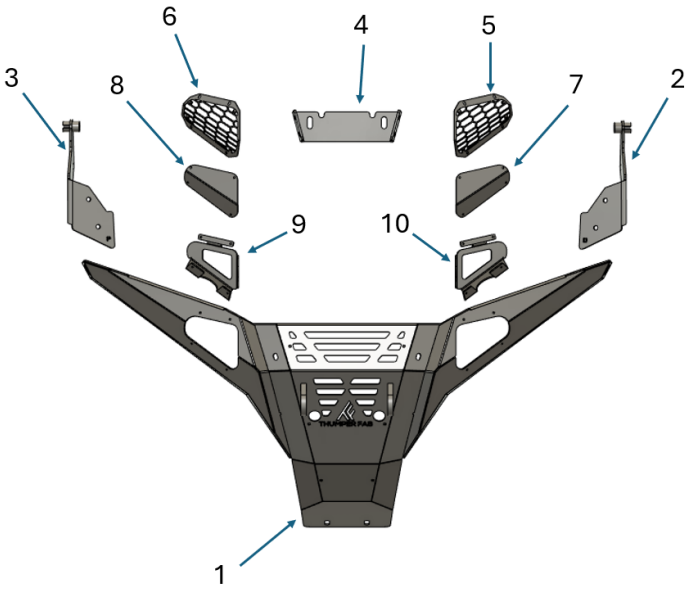
TOOLS

- 10mm Socket and Wrench
- 13mm Socket and Wrench
- 15mm Socket and Wrench
- 11/32" Wrench
- 8mm Allen
- 9/64" Allen
- T40 Torx
- Push Lock Removal Tool

BEFORE YOU BEGIN

If you do not feel comfortable installing your Thumper Fab Front Bumper, please see your nearest Polaris® Dealer for installation.

INSTALLATION INSTRUCTIONS



Polaris Xpedition Front Winch Bumper

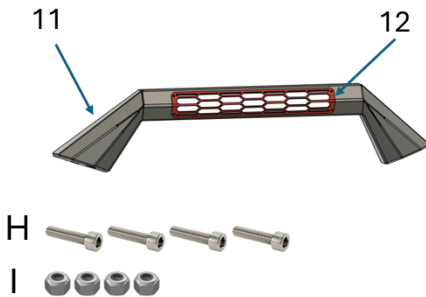
SKU: TF200501



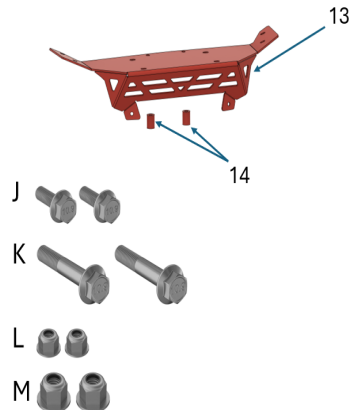
OPTIONAL PARTS

REF	QTY	DESCRIPTION
BULL BAR OPTION (TF200501.B)		
11	1	Bull Bar
12	1	Bull Bar Light Cover
BULL BAR HARDWARE KIT		
H	4	#8 x 1/2" Socket Cap Screws
I	4	#8 Nylon lock Nuts
BIG WINCH OPTION (TF200501.C)		
13	1	Big Winch Mount Plate
14	2	Support Spacers
BIG WINCH HARDWARE KIT		
J	2	M8 x 25mm Flange Head Bolts
K	2	M10 x 70mm Flange Head Bolts
L	2	M8 Flange Nylon Lock Nuts
M	2	M10 Flange Nylon Lock Nuts

BULL BAR OPTION



BIG WINCH OPTION



INSTALLATION INSTRUCTIONS

Installation Preparation

Prior to installation, the OEM bumper, winch, and front fascia must be removed. Remove the lower mounting bolts for the OEM Bumper using a 15mm socket (FIG 1).



FIG 1 - Remove Lower Bumper Mounting Bolts using 15mm Socket

Remove the upper mounting bolts for the OEM bumper using a 15mm socket and wrench (FIG 2).



FIG 2 - Remove Upper Bumper Mounting Bolts using 15mm Socket & Wrench

INSTALLATION INSTRUCTIONS

Installation Preparation

Remove the bumper from the unit and set aside (**FIG 3**).



FIG 3 - Remove the bumper from the vehicle

Remove the front fascia use a T40 Torx and a push lock removal tool (**FIG 4 & FIG 5**).

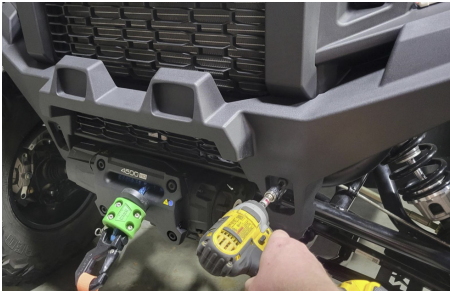


FIG 4 & FIG 5 - Remove Front Fascia

INSTALLATION INSTRUCTIONS

Installation Preparation

Disconnect the battery from the vehicle in preparation of removing the winch. The battery is located under the drivers seat (**FIG 6**).



FIG 6 - Disconnect battery using a 10mm Socket and 13mm Wrench

Use an 8mm allen to remove the 4 winch mounting bolts (**FIG 7**).



FIG 7 - Remove winch mounting bolts using an 8mm Allen

INSTALLATION INSTRUCTIONS

Installation Preparation

Use a 10mm wrench to disconnect the leads to the winch and disconnect any wiring connectors to winch. Lift winch up and away from the vehicle (**FIG 8**).



FIG 8 - Remove the winch from the vehicle

Bumper Preparation

Before mounting the bumper to the vehicle it is easiest to install wing light mounts, light covers, and hole covers if applicable. The light mounts accept a KC Highlights single light. If not using the light mount, you have the option to mount the hole cover to the wing with the light cover on the inside or outside of the bumper. The first step is to mount the hole cover to the light cover if not using the KC Lights. Use 8 x #8 x 3/4" socket cap screws (**G**) and 8 x #8 nylon lock nuts (**F**) (**FIG 9**).

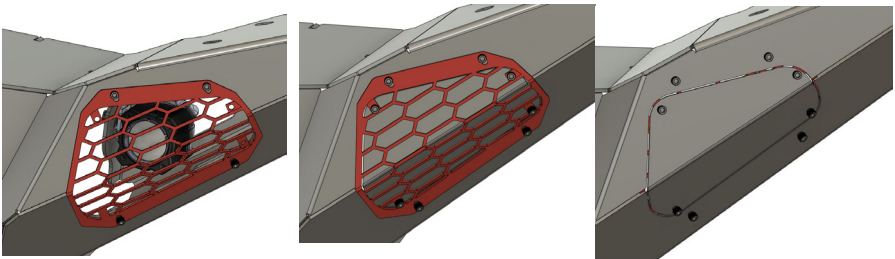


FIG 9 - Mount Hole Covers to Light Bar Covers using 9/64" Allen and 11/32" Wrench

INSTALLATION INSTRUCTIONS

Bumper Preparation

If you are using the KC wing lights, mount the light to the driver and passenger recessed light mounts before fastening to the bumper. Also, if you plan on running the light covers, the light mount and light covers are mounted at the same time using 8 x #8 x 3/4" socket cap screws and 8 x #8 nylon lock nuts. If not using KC lights and light mounts, mount the light cover and hole covers the same way. Tighten using a 9/64" allen and 11/32" wrench (**FIG 11**).

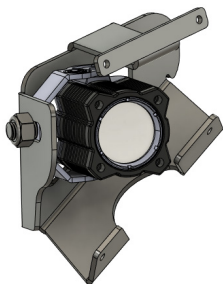


FIG 11 - Mount light mounts, hole covers, and light covers depending on desired appearance. Tighten using 9/64" Allen and 11/32" Wrench

If the bull bar option was selected, it is easiest to mount the light bar cover to the bull bar prior to installation on vehicle. Use 4 x #8x 1/2" socket cap screws and 4 x #8 nylon lock nuts, tighten using a 9/64" allen and 11/32" wrench. If the light option for the bull bar was selected, mount the light inside the bull bar using hardware from the light box (**FIG 12 & FIG 13**).

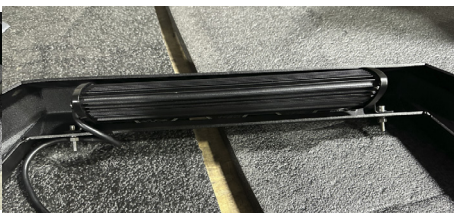


FIG 12 & FIG 13 - If applicable, mount the Light Bar Cover and optional Light Bar to the Bull Bar

INSTALLATION INSTRUCTIONS

Bumper Preparation

If the big winch option is selected, mount the winch to the big winch mount plate using hardware provided in winch box. Next, mount the big winch mount plate (13) to the main bumper using 2 x support spacers (14), 2 x M8x25mm flange head bolts (J), 2 x M10x70mm flange head bolts (K), 2 x M8 flange nylon lock nuts (L), and 2 x M10 flange nylon lock nuts (M). Tighten using a 13mm socket and wrench along with a 15mm socket and wrench (FIG 14). **MOUNTING OF BIG WINCH MAY CAUSE OVERHEATING ISSUES.**

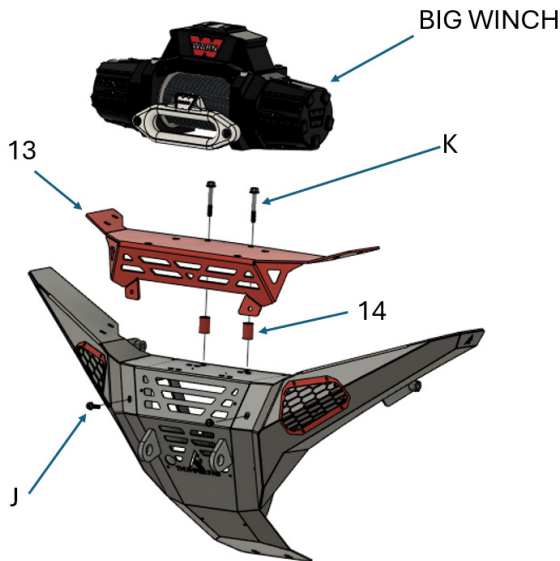


FIG 14 - Mount Big Winch Mount to Bumper Body using a 13mm Socket and Wrench and a 15mm Socket and Wrench

INSTALLATION INSTRUCTIONS

Bumper Installation

The first step in the installation procedure is to mount the middle mount (4) to the frame using 2 x M10x30mm flange head bolts (J). Do not fully tighten (FIG 15).

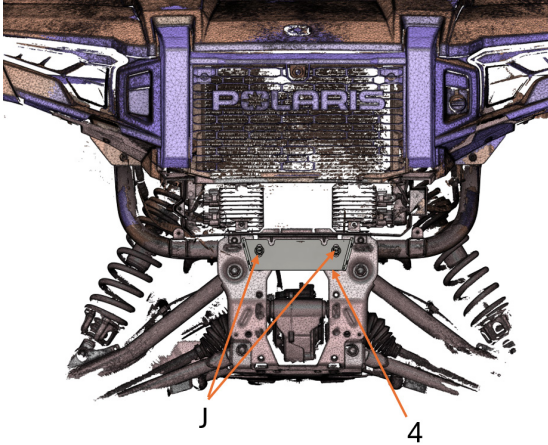


FIG 15 - Loosley Mount the Middle Mount to the frame using a 15mm Socket

With the help of a friend, place the bumper into position and fasten the bumper body to the frame using 2 x M10x30mm flange head bolts (J). Loosley tighten using a 15mm socket. Bumper will still need to be physically held in position at this stage, it may take the help of 2 people if big winch option is selected as winch will need to be mounted to bumper before installing bumper on vehicle (FIG 16).

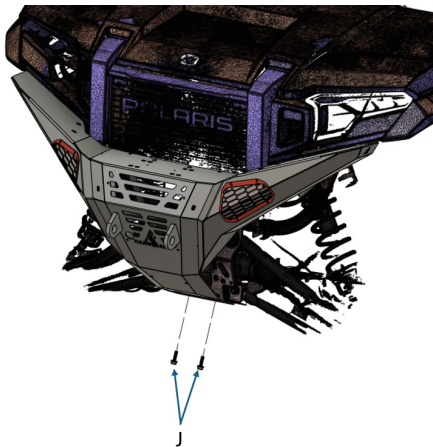


FIG 16 - Mount Bumper Body to vehicle using a 15mm Socket. Do not fully tighten

INSTALLATION INSTRUCTIONS

Bumper Installation

Loosely fasten the bumper body to the middle mount using 4 x M8x25mm flange head bolts (**D**) and 4 x M8 flange nylon lock nuts (**E**) using a 13mm socket and wrench (**FIG 17**).

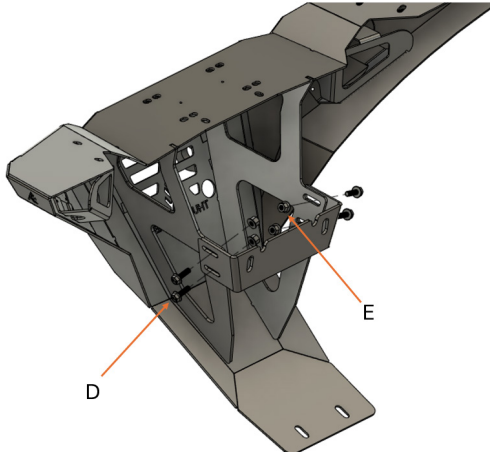


FIG 17 - Loosely mount the Bumper Body to the Middle Mount using a 13mm Socket and Wrench

Loosely mount the driver and passenger upper mount brackets to the frame using 2 x M10x60mm flange head bolts (**B**) and 2 x M10 flange nylon lock nuts (**C**). Snug up with a 15mm socket and wrench. Do not tighten at this time (**FIG 18**).

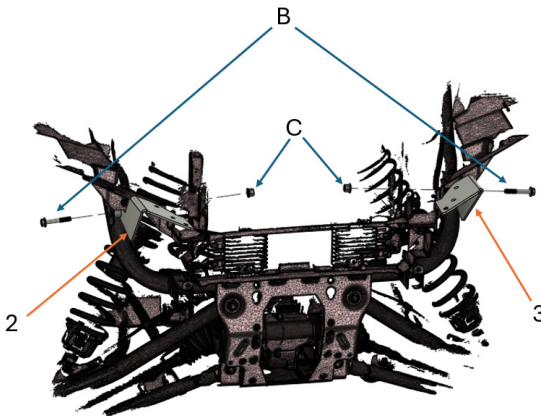


FIG 18 - Mount Upper Mount Brackets to the frame using a 15mm Socket and Wrench

INSTALLATION INSTRUCTIONS

Bumper Installation

Fasten the bumper body to the upper mount brackets using 4 x M8x25mm flange head bolts (D) using a 13mm socket. Depending on if you selected the bull bar or big winch option, these bolts will go through the selected option and thread into weldnuts on the inside of the wings of the bumper. With these last 4 bolts tight, tighten all remaining hardware evenly (**FIG 19**).

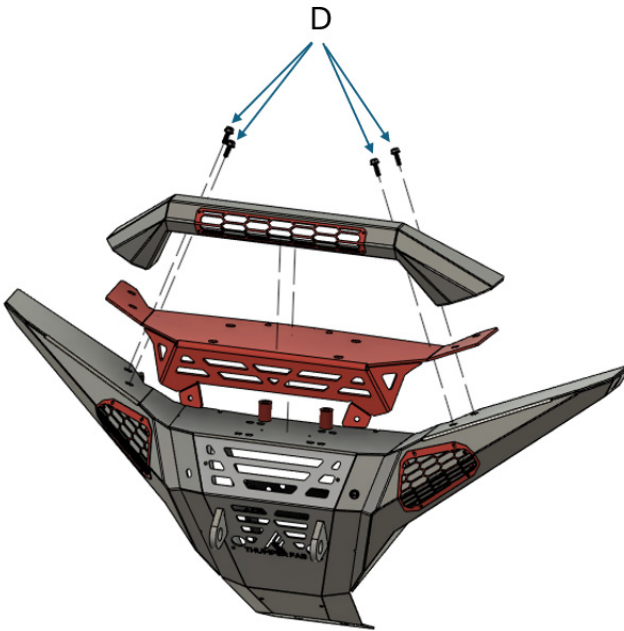


FIG 19 - Mount the Bumper Body to the Upper Mount Brackets using a 13mm Socket. Tighten all remaining hardware evenly

INSTALLATION INSTRUCTIONS

PRODUCT DISCLAIMER

The installation of products sold or manufactured by Thumper Fabrication, LLC (Thumper Fab) including, but not limited to suspension components such as lift kits, audio roofs, roll cages, frame stiffener kits, and tires that exceed the original specifications for the vehicle, may change the vehicle's center of gravity and handling characteristics both on- and off-road. You are aware that the installation of tires that are larger than original vehicle specifications may reduce the effectiveness of the braking system. Use of these products may place added stress to the original factory vehicle components which could cause them to weaken or possibly fail.

Products sold or manufactured by Thumper Fab are intended for off-road use only. Operation of a vehicle modified with these products on a road could result in serious bodily injury or death, and such operation may violate the laws of your state or municipality. You agree to operate your vehicle exclusively in the manner intended by the vehicle manufacturer. You agree that failure to safely and reasonably operate your vehicle could result in serious bodily injury or death, and that, as a result of installation of this product(s) to your vehicle, extreme care must be taken to prevent vehicle rollover or loss of control, which may be more likely to occur as a result of said modifications. You will avoid unsafe maneuvers, including sudden sharp turns or other abrupt maneuvers, which could make a vehicular accident more likely. You understand that Thumper Fab is not responsible or liable for any damages or any injuries to yourself or your passengers that could occur upon possible accidents due to driver error, incorrect installations, bad judgment, incompatibility with other aftermarket accessories or natural disasters to the fullest extent allowable by law. You will have all vehicle occupants fasten seatbelts, if equipped, and wear proper safety equipment, such as DOT approved helmet and eye protection prior to operating the vehicle. You understand and acknowledge that failure to wear proper safety equipment may increase the risk of serious bodily injury or death to yourself and any passengers.

Proper installation of products sold or manufactured by Thumper Fab requires knowledge of the factory recommended procedures for removal and installation of original equipment components. Installation of these products without proper knowledge and experience may affect the performance of these components and the safety of the vehicle and cause serious bodily injury or death. It is strongly recommended that a certified mechanic familiar with the installation of similar components perform the product(s) installation.

Prior to installing any products sold or manufactured by Thumper Fab, you will perform or cause to be performed an inspection of their vehicle to confirm its condition is suitable for the installation of these products. A proper inspection of the vehicle includes confirmation that the vehicle has not been in a collision and is free of corrosion. If the vehicle is suspected to have been in a collision or misused, or is otherwise unsuitable for modification, you will not install the product(s). You will continue to inspect the vehicle prior to each use to confirm its condition is suitable for its intended use, and you acknowledge that the failure to do so may result in serious bodily injury or death, as well as damage to the vehicle itself.

You will install any warning labels provided with the product so it may be prominently seen by yourself and all passengers. You will notify all passengers of the modifications performed to your vehicle prior to operation.

Insurance companies may handle coverage of a modified vehicle differently. Please check with your insurance carrier prior to modifying the vehicle to ensure your coverage remains sufficient. Installation of this product(s) may void your vehicle warranty. If this is a concern, please check with the manufacturer or dealer before purchase or installation of this product(s).



THUMPER FAB

Thumper Fab

5103 Elysian Fields Rd, Marshall, TX 75672

Customer Service: 903-472-0928

www.thumperfab.com