

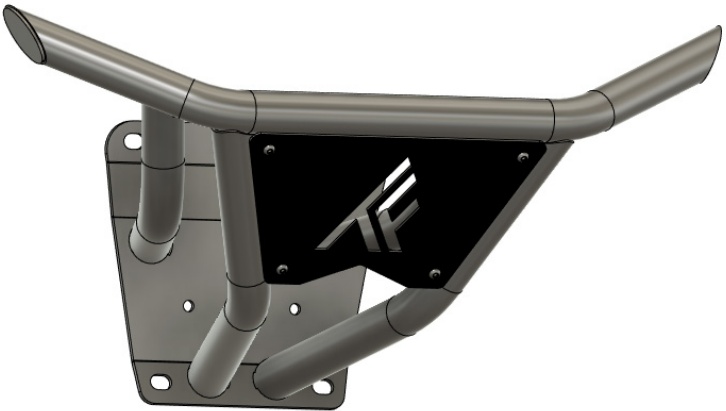


THUMPER FAB

Aluminum Audio Roofs ♦ Roll Cages ♦ UTV Accessories

Polaris RZR Pro R **Front Winch Bumper**

SKU: TF130501



Thumper Fab

5103 Elysian Fields Rd, Marshall, TX 75672

Customer Service: 903-472-0928

www.thumperfab.com

Ver. 0123

Polaris RZR Pro R Front Winch Bumper

SKU: TF130501

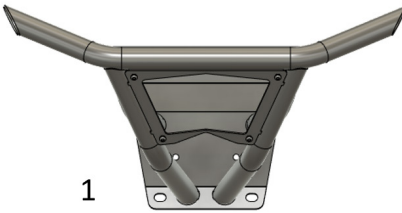


PARTS

REF	QTY	DESCRIPTION
1	1	Front Bumper
2	1	Accent Panel
Hardware Kit		
A	4	1/4"-20 x 1" Button Head Screw
B	4	1/4"-20 Lock Nut

TOOLS

- 15mm Socket
- T40 Torx
- Ratchet
- 3/16" Allen
- 7/16" Socket
- Sawzall or similar cutting tool



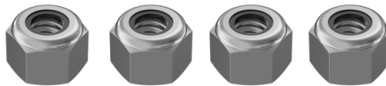
1



2



A



B

BEFORE YOU BEGIN

If you do not feel comfortable installing your **Thumper Fab** front bumper, please see your nearest Polaris® Dealer for installation.

INSTALLATION INSTRUCTIONS

Remove front plastics

Use a T40 torx to remove 8 x T40 factory bolts that hold the front plastics to the unit (**FIG 1**).



FIG 1 - Remove plastics with T40 Torx

Remove Front Bumper

Use a 15mm socket to remove the factory bumper. Set aside the 4 factory mounting bolts as these will be used for mounting the new Thumper Fab bumper (**FIG 2**).



FIG 2 - Remove OEM bumper with 15mm Socket

INSTALLATION INSTRUCTIONS

Install Thumper Fab Bumper

Use the 4 factory bumper mounting bolts and a 15mm socket to fasten Thumper Fab Bumper to unit (FIG 3).

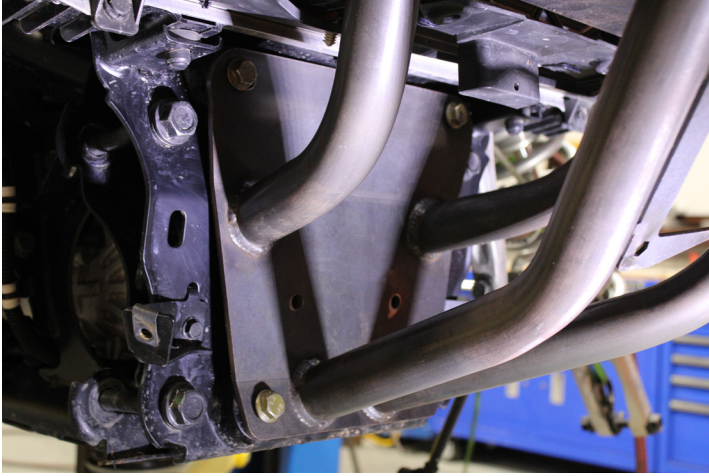


FIG 3 - Mount bumper using 15mm Socket and factory hardware

Trim Front Plastics

Use a sawzall or equivalent cutting tool to trim the front plastics to fit as shown (FIG 4).



FIG 4 - Trim the plastics using a Sawzall or similar cutting tool

INSTALLATION INSTRUCTIONS

Slide the outer plastic fascia through the bumper before fully seating it in the factory position. Use the 8 x factory T40 screws to fasten the plastics back onto the unit after trimming (**FIG 5**).



FIG 5 - Remount plastics using factory hardware and T40 Torx

Install Thumper Fab Bumper Accent Panel

Use the 4 x 1/4"-20" button head screws (**A**) and 4 x 1/4"-20 lock nuts (**B**) to fasten the accent panel to the front bumper (**FIG 6**).



FIG 6 - Mount bumper using 3/16" Allen and 7/16" Socket

INSTALLATION INSTRUCTIONS

Install Fairlead and Winch (If Applicable)

Fairlead mount is an add-on and can be purchased by calling Thumper Fab if a winch is planned to be used. If so, place the fairlead mount plate over the winch mount holes in preparation for winch mounting. The plate will be fastened between the winch and the bumper (FIG 7).



FIG 7 - Place the fairlead on bumper in preparation for winch mounting

Place your winch on top of the fairlead mount plate and fasten using the hardware supplied from winch manufacturer (FIG 8).



FIG 8 - Mount winch on top of fairlead plate

INSTALLATION INSTRUCTIONS

The installation of products sold or manufactured by Thumper Fab including, but not limited to suspension components such as lift kits, control arms, frame stiffener kits, roofs, roll cages, and tires that exceed the original specifications for the vehicle, may change the vehicle's center of gravity and handling characteristics both on- and off-road. You are aware that the installation of tires that are larger than original vehicle specifications may reduce the effectiveness of the braking system. Use of these products may place added stress to the original factory vehicle components which could cause them to weaken or possibly fail.

Products sold or manufactured by Thumper Fab are intended for off-road use only. Operation of a vehicle modified with these products on a road could result in serious bodily injury or death, and such operation may violate the laws of your state or municipality. You agree to operate your vehicle exclusively in the manner intended by the vehicle manufacturer. You agree that failure to safely and reasonably operate your vehicle could result in serious bodily injury or death, and that, as a result of installation of this product(s) to your vehicle, extreme care must be taken to prevent vehicle rollover or loss of control, which may be more likely to occur as a result of said modifications. You will avoid unsafe maneuvers, including sudden sharp turns or other abrupt maneuvers, which could make a vehicular accident more likely. You understand that Thumper Fab is not responsible or liable for any damages or any injuries to yourself or your passengers that could occur upon possible accidents due to driver error, incorrect installations, bad judgment, incompatibility with other aftermarket accessories or natural disasters to the fullest extent allowable by law. You will have all vehicle occupants fasten seatbelts, if equipped, and wear proper safety equipment, such as DOT approved helmet and eye protection prior to operating the vehicle. You understand and acknowledge that failure to wear proper safety equipment may increase the risk of serious bodily injury or death to yourself and any passengers.

INSTALLATION INSTRUCTIONS

Proper installation of products sold or manufactured by Thumper Fab requires knowledge of the factory recommended procedures for removal and installation of original equipment components. Installation of these products without proper knowledge and experience may affect the performance of these components and the safety of the vehicle and cause serious bodily injury or death. It is strongly recommended that a certified mechanic familiar with the installation of similar components perform the product(s) installation.

Prior to installing any products sold or manufactured by Thumper Fab, you will perform or cause to be performed an inspection of their vehicle to confirm its condition is suitable for the installation of these products. A proper inspection of the vehicle includes confirmation that the vehicle has not been in a collision and is free of corrosion. If the vehicle is suspected to have been in a collision or misused, or is otherwise unsuitable for modification, you will not install the product(s). You will continue to inspect the vehicle prior to each use to confirm its condition is suitable for its intended use, and you acknowledge that the failure to do so may result in serious bodily injury or death, as well as damage to the vehicle itself.

You will install any warning labels provided with the product so it may be prominently seen by yourself and all passengers. You will notify all passengers of the modifications performed to your vehicle prior to operation.

Insurance companies may handle coverage of a modified vehicle differently. Please check with your insurance carrier prior to modifying the vehicle to ensure your coverage remains sufficient.

Installation of this product(s) may void your vehicle warranty. If this is a concern, please check with the manufacturer or dealer before purchase or installation of this product(s).



THUMPER FAB

Thumper Fab

5103 Elysian Fields Rd, Marshall, TX 75672

Customer Service: 903-472-0928

www.thumperfab.com