



THUMPER FAB

Aluminum Audio Roofs • Roll Cages • UTV Accessories

TRACKER OFF ROAD 800SX Nerf Rails

SKU: TF070702



Thumper Fab

5103 Elysian Fields Rd, Marshall, TX 75672

Customer Service: 903-472-0928

www.thumperfab.com

Ver. 0322

TRACKER OFF ROAD 800SX

Nerf Rails

SKU: TF070702



PARTS

| REF | QTY | DESCRIPTION |
|--------------|-----|-------------------------------|
| 1 | 1 | Driver Side Nerf Rail |
| 2 | 1 | Passenger Side Nerf Rail |
| 3 | 2 | Accent Panel |
| 4 | 1 | Holesaw Template |
| Hardware Kit | | |
| A | 6 | M8-1.25 x 45mm Flange Bolt |
| B | 6 | M8-1.25 Flanged Locknut |
| C | 6 | M8 Flat Washer |
| D | 8 | M6-1.0 x 25mm Body Bolt |
| E | 4 | #8-32 x 1/2" Button Cap Screw |

TOOLS

- 13mm Socket
- 13mm Wrench
- 9/64" Allen Wrench
- T-30 Torx Bit
- Ratchet
- 3" Extension
- Drill
- 1.5" Holesaw
- Marker



BEFORE YOU BEGIN

If you do not feel comfortable installing your **Thumper Fab** Nerf Rails, please see your nearest Tracker® Dealer for installation.

INSTALLATION INSTRUCTIONS

Remove Factory Doors and Quarter Panels

Remove the factory doors and quarter panels on both driver and passenger side. Locate the 3 hole cut out locations pre marked from the factory on the inside of the quarter panels (**FIG 1**).

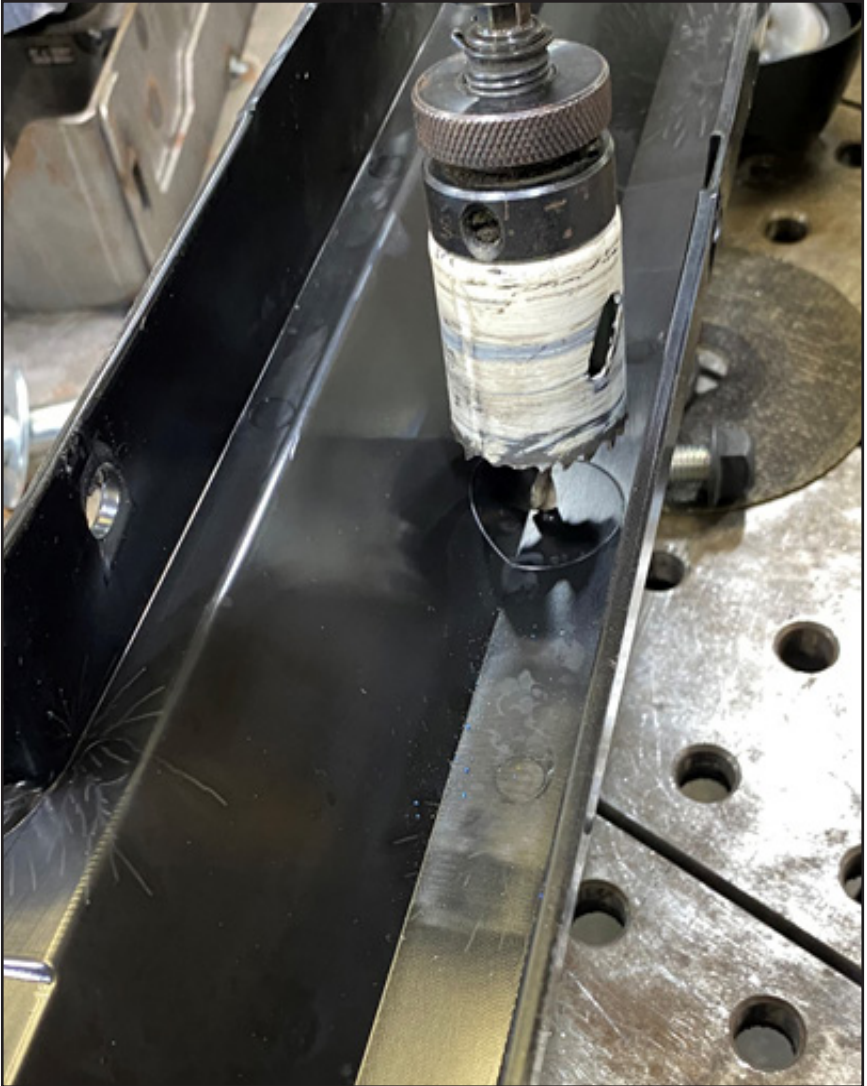


FIG 1 - Use 1.5" Holesaw to cut holes in Quarter Panels

INSTALLATION INSTRUCTIONS

Remove Skid Plate and Drill Holes using Template

Remove the skid plate and use the provided template to mark the front hole location by aligning the template with cutouts in the factory skidplate as shown below (**FIG 2**).



FIG 2 - Use Template to mark front hole using “F” hole on template.

Mark the middle hole using the template after aligning the template as shown below to line up with cutouts in the factory skid plate (**FIG 3**)

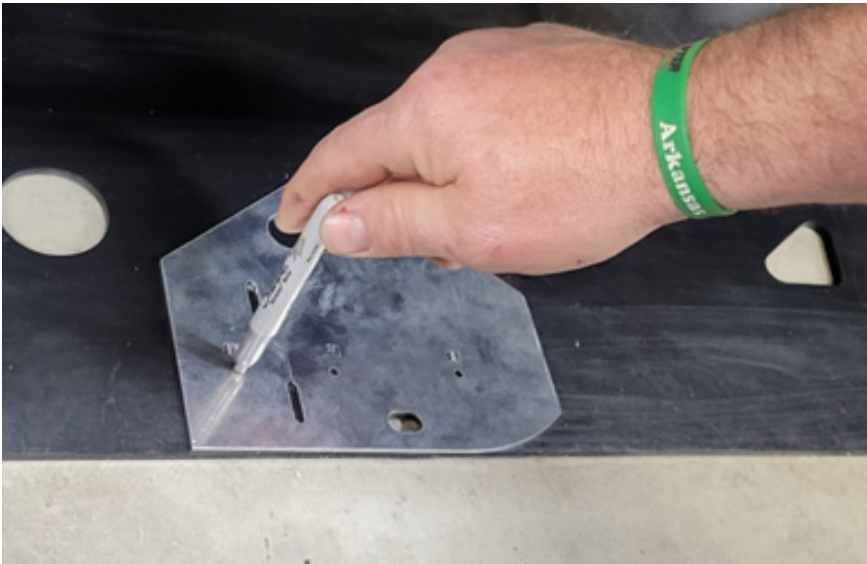


FIG 3 - Use Template to mark middle hole using “M” hole on template.

INSTALLATION INSTRUCTIONS

Remove Skid Plate and Drill Holes using Template

Mark the rear hole using the template after aligning the template as shown below to line up the cutouts in the factory cutouts to the holes provided in the template (**FIG 4**).

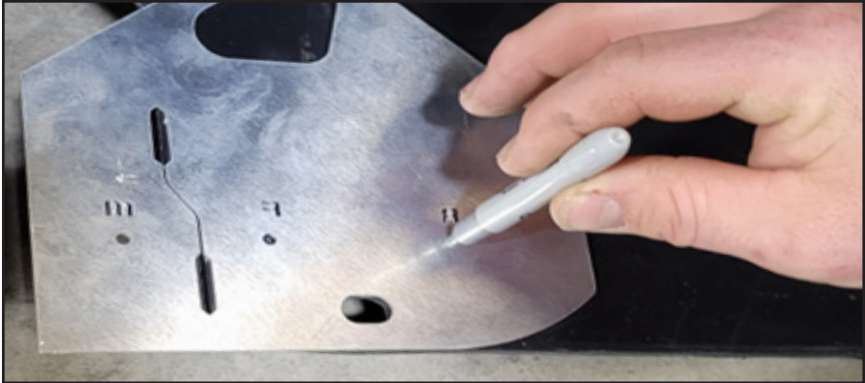


FIG 4 - Use Template to mark rear hole using "R" hole on template.

Once all holes are marked using template, use the 1.5" holesaw to drill holes out (**FIG 5**).



FIG 5 - Cut holes out of skidplate using 1.5" Holesaw.

INSTALLATION INSTRUCTIONS

Reinstall Skid Plate, Quarter Panels, and Doors

Reinstall the skid plate except for the 4 factory bolts that run along the outside frame rails on each side of the unit. Provided 8 x M6-1.0 x 25mm body bolts (**D**) will be used instead on these 4 bolts holes on each side.

Install quarter panels using factory hardware on both the driver and passenger side. Reinstall the doors using all factory hardware.

Install Nerf Rails

Install the nerf rails using the 3 x M8-1.25 x 45mm flange bolts (**A**) which will thread through the frame into the M8 flat washer (**C**) then into the M8-1.25 locknut (**B**) (**FIG 6**). Loosley fasten the M8-1.25 x 45mm flange bolts (**A**) to the frame using a 13mm socket and 13mm wrench.

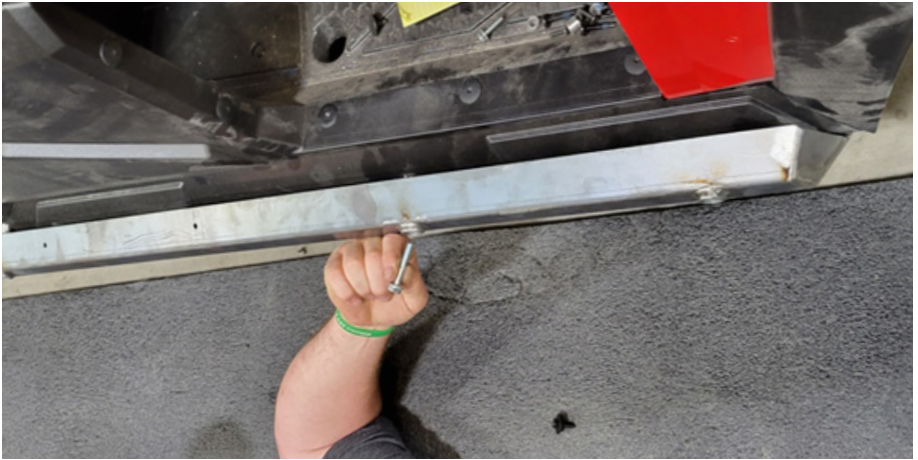


FIG 6 - Loosely fasten Nerf Rail using 13mm Socket and 13mm Wrench.

INSTALLATION INSTRUCTIONS

Install Nerf Rail Continued

Thread and tighten the 4 x M6-1.00 x 25mm Body Bolts (D) up through the bottom of the nerf rail, through the skid plate and into threaded frame holes using T-30 torx bit (FIG 7). Once M6-1.0 x 25mm body bolts (D) are tight, finish tightening M8-1.25 x 45mm flange bolts (A)



FIG 7 - Tighten up M6-1.0 x 25mm Body Bolts using T-30 Torx Bit

Install Accent Panels

Install accent panels onto nerf rail using supplied 8-32 x 1/2" button cap screws (E) and 9/64" allen wrench (FIG 8).



FIG 8 - Install Accent Panel using 9/64" Allen Wrench.



THUMPER FAB

Thumper Fab

5103 Elysian Fields Rd, Marshall, TX 75672

Customer Service: 903-472-0928

www.thumperfab.com