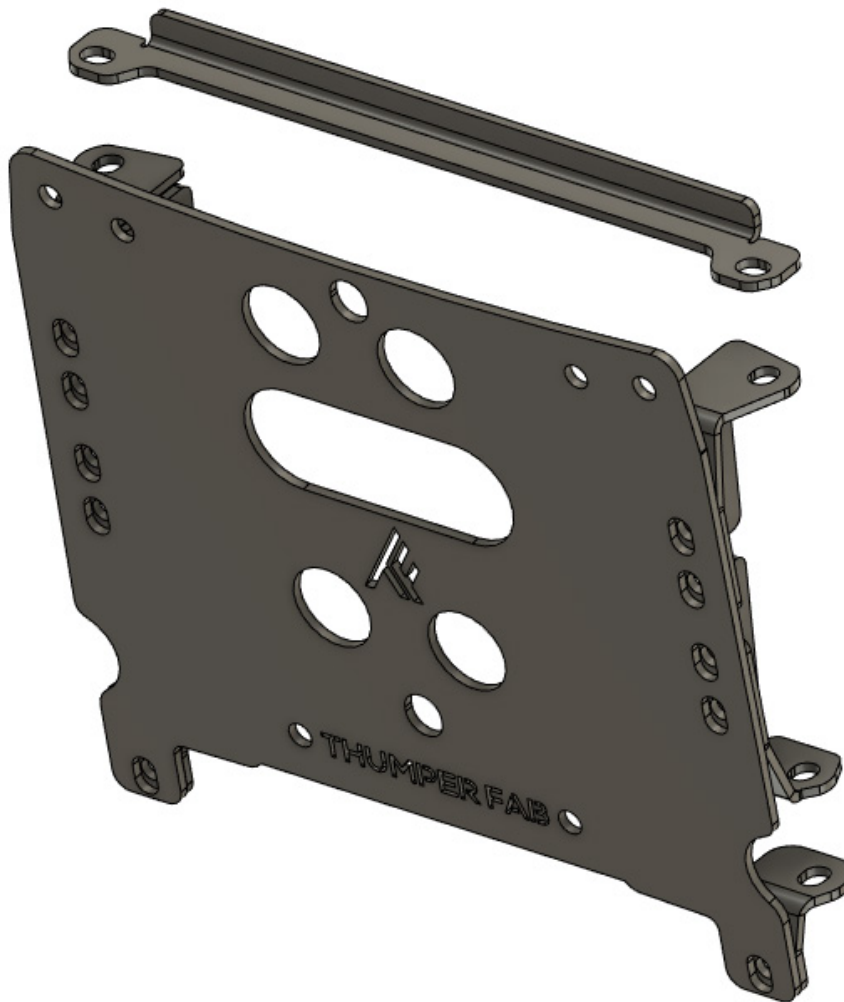


Can Am Defender
Front Frame Stiffener

SKU: TF040906



Thumper Fab
5103 Elysian Fields Rd, Marshall, TX 75672
Customer Service: 903-472-0928

Can Am Defender Front Frame Stiffener

SKU: TF040906

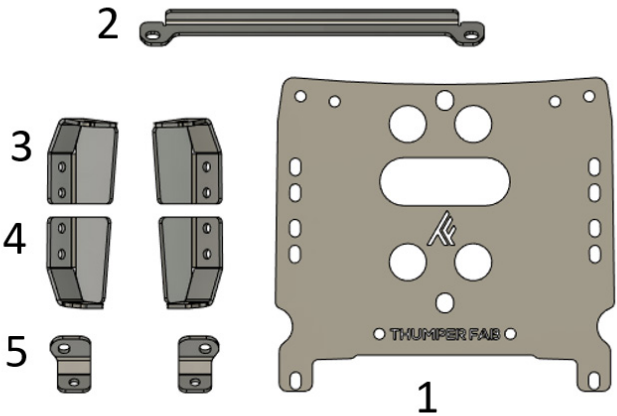


PARTS

REF	QTY	DESCRIPTION
1	1	Main Plate
2	1	Front Support
3	2	Middle Support #1
4	2	Middle Support #2
5	2	Rear Support
HARDWARE KIT		
A	2	M10-1.5x25mm Flange Head Bolts
B	10	M10-1.5x30mm Flange Head Bolts
C	4	M10-1.5x80mm Flange Head Bolts
D	16	M10-1.5 Flanged Nylon Lock Nuts

TOOLS

- 15mm Socket
- 15mm Wrench
- Drill
- 13/32" Drill Bit



BEFORE YOU BEGIN

If you do not feel comfortable installing your **Thumper Fab** Frame Stiffener please see your nearest Can Am® Dealer for installation.

INSTALLATION INSTRUCTIONS

Unbolt Lower Control Arms From the Frame

Jack up the front end of the Defender and place on jackstands, remove the wheels. Use a 15mm socket and 15mm wrench to unbolt the lower control arms from the frame of the unit leaving the arms in place (**FIG 1**).



FIG 1 - Remove Lower Control Arm mounting bolts using 15mm Socket and 15mm Wrench

Mount the Middle Support Brackets #1 and #2 to the frame using 4 x M10-1.5x80mm flange head bolts (**C**) (**FIG 2**).



FIG 2 - Install Middle Support #1 and Middle Support #2

INSTALLATION INSTRUCTIONS

Installation of Frame Stiffener

Loosley fasten the main plate to the middle supports using 8 x M10-1.5x30mm flange head bolts (**B**) (**FIG 3**).

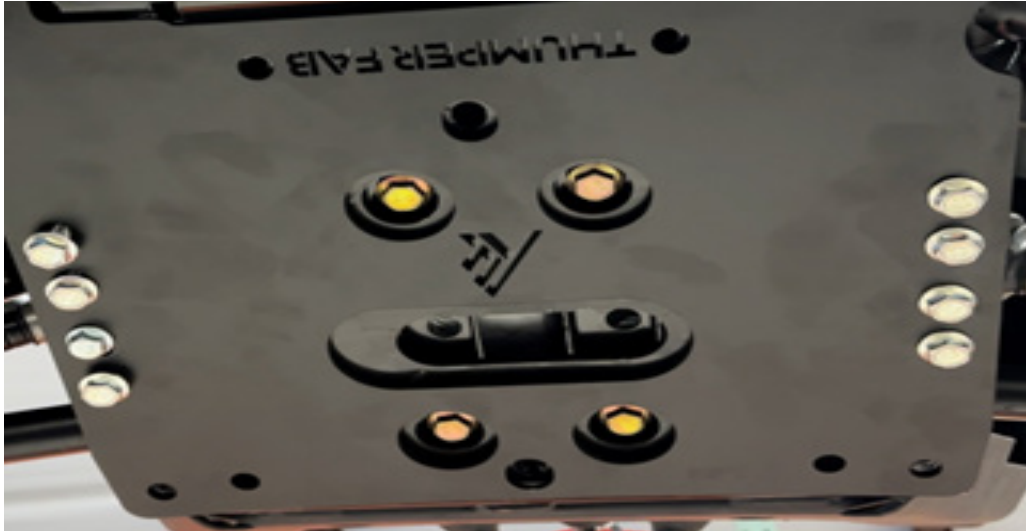


FIG 3 - Loosley install the Main Plate using a 15mm Socket and 15mm Wrench

Mount the Rear Support (**5**) to the frame by sliding the rear support over the remainder of the 2 x rear M10-1.5x80mm flange bolts used to mount the rear middle support (Middle Support #2) to the chassis. Once the bracket has been slid over the bolt, use 2 x M10-1.5 flanged lock nut (**D**) to snug bracket to frame. Use a 2 x M10-1.5x30mm flange head bolt and a 2 x M10-1.5 flanged lock nut to faster rear support to main plate (**FIG 4**).

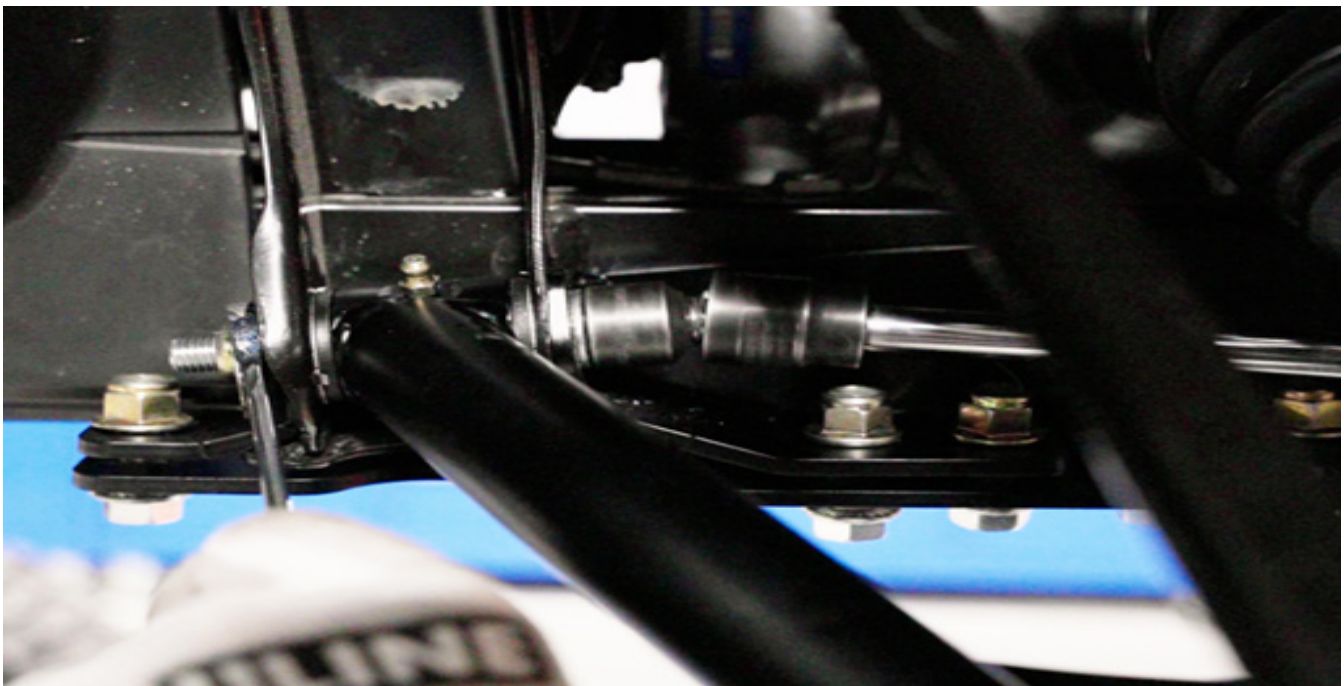


FIG 4 - Install Rear Support using 15mm Socket and 15mm Wrench

INSTALLATION INSTRUCTIONS

Installation of Frame Stiffener

Install Front Support by sliding the front support over the 2 x front M10-1.5x80mm flange head bolts (C). Loosely fasten the front support using M10-1.5 flange nylon lock nuts (D) and 15mm wrench and 15mm socket (FIG 5).

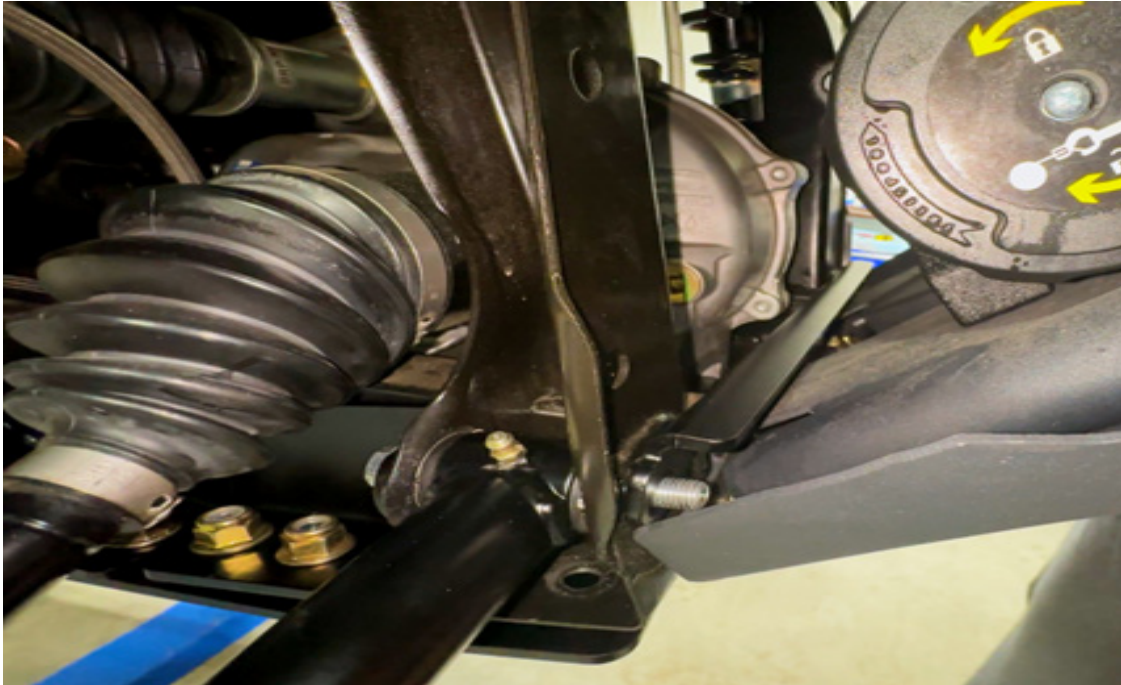


FIG 5 - Install Front Support using a 15mm Socket and 15mm Wrench

Using the front most holes in the main plate as a template, use a 13/32" drill bit to enlarge the OEM holes in the frame (FIG 6).



FIG 6 - Use 13/32" Drill bit to enlarge OEM holes in frame using Main Plate as a template

INSTALLATION INSTRUCTIONS

Installation of Frame Stiffener

Loosley fasten the main plate to the front of the frame using 2 x M10-1.5x25mm flange head bolts (A) using 15mm socket and 15mm wrench (**FIG 7**).

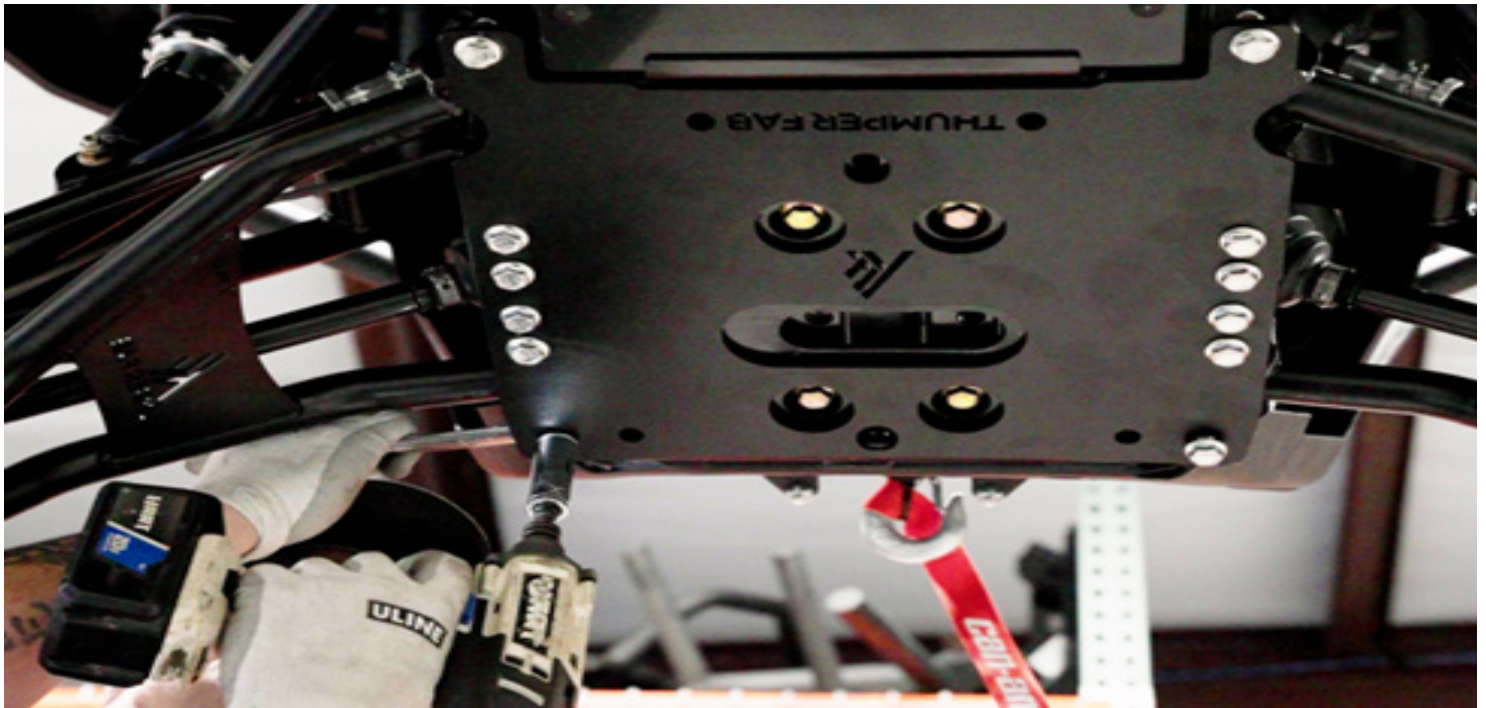


FIG 7 - Fasten M10-1.5x25mm Flange Head Bolts using 15mm Socket and 15mm Wrench

Once all bolts have been started, tighten all bolts evenly. Reinstall the wheels and lower the Defender on the ground. Enjoy your new Thumper Fab Frame Stiffener! If you would like to see the installation video, visit our website at www.Thumperfab.com.

INSTALLATION INSTRUCTIONS

The installation of products sold or manufactured by Thumper Fab including, but not limited to suspension components such as lift kits, control arms, frame stiffener kits, roofs, roll cages, and tires that exceed the original specifications for the vehicle, may change the vehicle's center of gravity and handling characteristics both on and off-road. You are aware that the installation of tires that are larger than original vehicle specifications may reduce the effectiveness of the braking system. Use of these products may place added stress to the original factory vehicle components which could cause them to weaken or possibly fail.

Products sold or manufactured by Thumper Fab are intended for off-road use only. Operation of a vehicle modified with these products on a road could result in serious bodily injury or death, and such operation may violate the laws of your state or municipality. You agree to operate your vehicle exclusively in the manner intended by the vehicle manufacturer. You agree that failure to safely and reasonably operate your vehicle could result in serious bodily injury or death, and that, as a result of installation of this product(s) to your vehicle, extreme care must be taken to prevent vehicle rollover or loss of control, which may be more likely to occur as a result of said modifications. You will avoid unsafe maneuvers, including sudden sharp turns or other abrupt maneuvers, which could make a vehicular accident more likely. You understand that Thumper Fab is not responsible or liable for any damages or any injuries to yourself or your passengers that could occur upon possible accidents due to driver error, incorrect installations, bad judgment, incompatibility with other aftermarket accessories or natural disasters to the fullest extent allowable by law. You will have all vehicle occupants fasten seat belts, if equipped, and wear proper safety equipment, such as DOT approved helmet and eye protection prior to operating the vehicle. You understand and acknowledge that failure to wear proper safety equipment may increase the risk of serious bodily injury or death to yourself and any passengers.

Proper installation of products sold or manufactured by Thumper Fab requires knowledge of the factory recommended procedures for removal and installation of original equipment components. Installation of these products without proper knowledge and experience may affect the performance of these components and the safety of the vehicle and cause serious bodily injury or death. It is strongly recommended that a certified mechanic familiar with the installation of similar components perform the product(s) installation.

Prior to installing any products sold or manufactured by Thumper Fab, you will perform or cause to be performed an inspection of their vehicle to confirm its condition is suitable for the installation of these products. A proper inspection of the vehicle includes confirmation that the vehicle has not been in a collision and is free of corrosion. If the vehicle is suspected to have been in a collision or misused, or is otherwise unsuitable for modification, you will not install the product(s). You will continue to inspect the vehicle prior to each use to confirm its condition is suitable for its intended use, and you acknowledge that the failure to do so may result in serious bodily injury or death, as well as damage to the vehicle itself.

You will install any warning labels provided with the product so it may be prominently seen by yourself and all passengers. You will notify all passengers of the modifications performed to your vehicle prior to operation.

Insurance companies may handle coverage of a modified vehicle differently. Please check with your insurance carrier prior to modifying the vehicle to ensure your coverage remains sufficient.

Installation of this product(s) may void your vehicle warranty. If this is a concern, please check with the manufacturer or dealer before purchase or installation of this product(s).



Thumper Fab
5103 Elysian Fields Rd, Marshall, Tx 75672
Customer Service: 903-472-0928

www.thumperfab.com