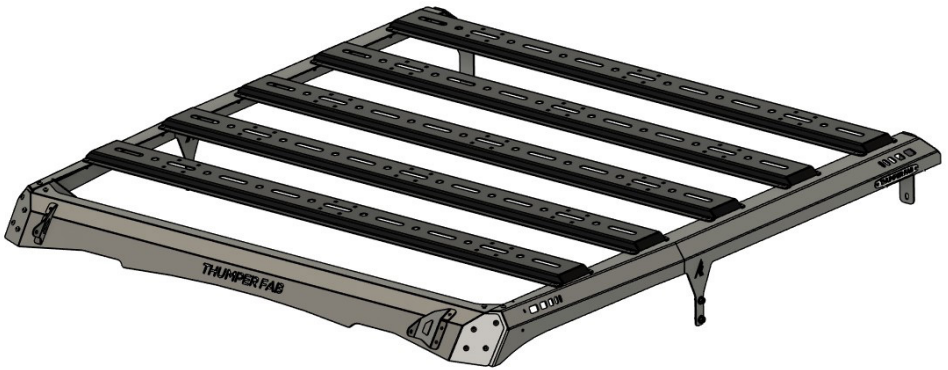


2025 Ranger CCrew
Roof Rack (Crew)

SKU: TF011911



Thumper Fab

5103 Elysian Fields Rd, Marshall, Tx 75672

Customer Service: 903-472-0928

www.thumperfab.com

2025 Ranger CCrew Roof Rack (Crew)



SKU: TF011911

PARTS

| REF | QTY | DESCRIPTION |
|--------------------------|-----|--|
| 1 | 1 | Side Rail DRIVER |
| 2 | 1 | Side Rail PASSENGER |
| 3 | 1 | Front Brow |
| 4 | 1 | Rear Mount Bracket (DRIVER) |
| 5 | 1 | Rear Mount Bracket (PASSENGER) |
| 6 | 2 | THUMPER FAB Logo Tag |
| 7 | 5 | Tie-Down Rail |
| 8 | 2 | Tie Down Accent Rail DRIVER (OPTIONAL, sold separately) |
| 9 | 2 | Tie Down Accent Rail PASSENGER (OPTIONAL, sold separately) |
| KC LIGHT BAR OPTION | | |
| 10 | 1 | KC Light Bar Mount DRIVER (<i>KC Light Bar Option, sold separately</i>) |
| 11 | 1 | KC Light Bar Mount PASSENGER (<i>KC Light Bar Option, sold separately</i>) |
| | 1 | KC Pro6 Light Bar |
| 40 INCH LIGHT BAR OPTION | | |
| 12 | 1 | 2 Row Light Bar Mount DRIVER |
| 13 | 1 | 2 Row Light Bar Mount PASSENGER |
| | 1 | 40 Inch, Slim 2 Row Light Bar |
| HARDWARE | | |
| A | 4 | M8 Flanged Hex Head Bolt |
| B | 6 | M8 Button Head, Hex Drive Screw |
| C | 6 | M8 Locknut |
| D | 38 | 1/4"-20 Button Head, Hex Drive Screw |
| E | 38 | 1/4"-20 Locknut |
| F | 4 | Rivets |

TOOLS

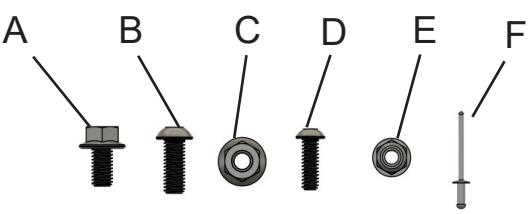
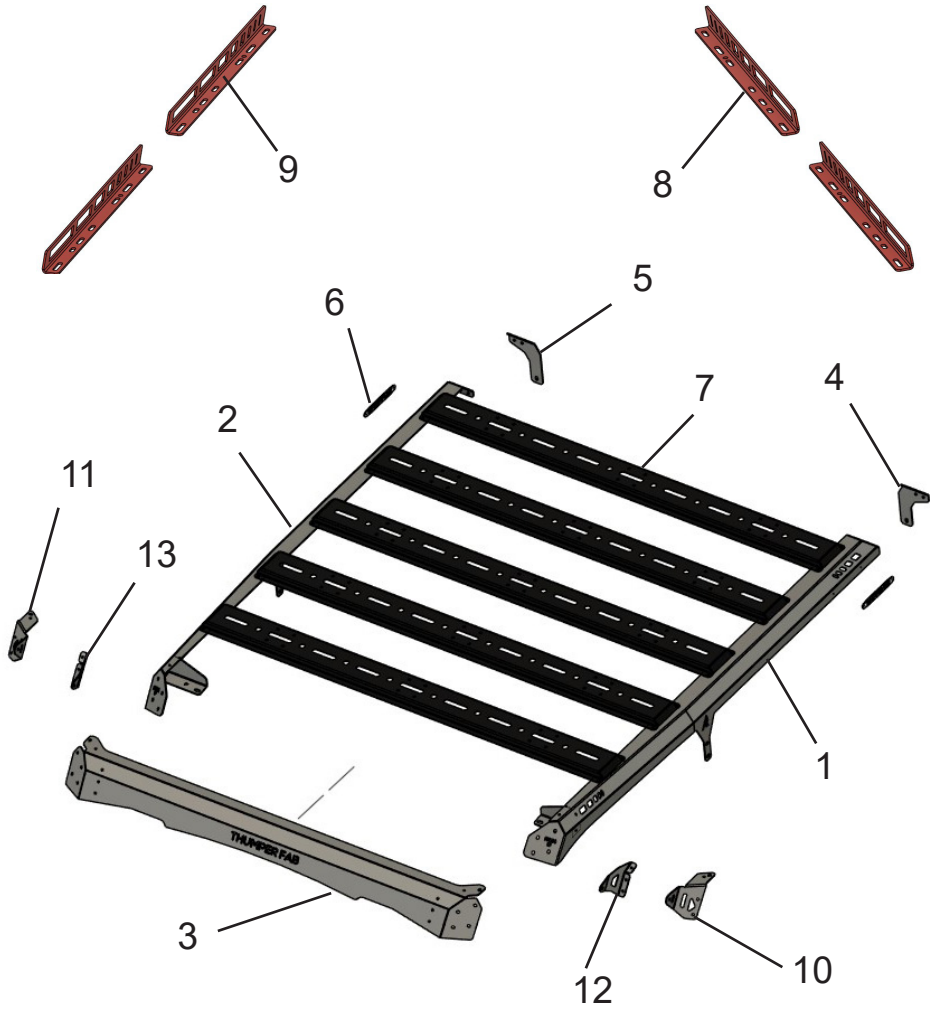
- 5/32" Allen
- 7/16" Wrench or Socket
- 5mm Allen
- 13mm Wrench or Socket
- T40 Torx
- T27 Torx
- Rivet Tool

BEFORE YOU BEGIN

If you do not feel comfortable installing your **Thumper Fab** Roof Rack, please see your nearest **Polaris® Dealer** for installation.

2025 Polaris Ranger Crew Roof Rack

SKU: TF011911



INSTALLATION INSTRUCTIONS

Pre-assembling the Roof Rack

Begin the pre-assembling the roof rack before installing it onto the unit, as shown. Start with assembling the Front Panel and the Side Rails, then move onto assembling the Tie Down Rails and the optional Tie Down Accent Rails. The Front Panel "interlocks" with the side rails as shown in FIG 2 & 3. Loosely fasten with the 1/4"-20 screws and 1/4"-20 locknuts. If you purchased the optional Tie Down Accent Rails, install these between the tie down rails and the driver and passenger mount rails. Tie Down Accent Rails will be installed under the 4 rear-most Tie Down Rails. (Fig 1 - 5)

FIG 1

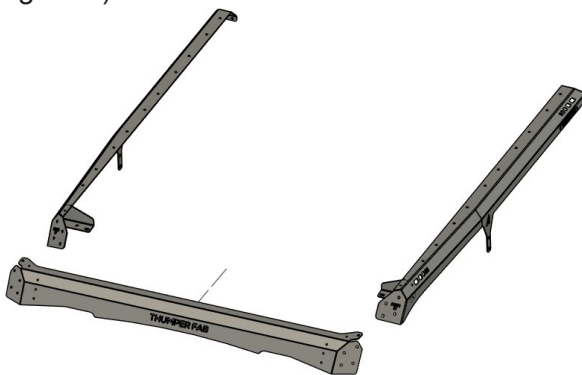


FIG 2



FIG 3



FIG 4



FIG 5

INSTALLATION INSTRUCTIONS



Pre-assembling the Roof Rack

Next, install the Rear Mount Brackets as shown. Loosely fasten for now. DRIVER SIDE shown below. (Fig 6 - 9)



FIG 6



FIG 7

Next, if you purchased one of the two light bar options, the brackets can be installed now. The location at which the light brackets are installed will be dependent on which light bar option was purchased. If you have purchased the 40in 2-Row Light Bar Option, these brackets will be attached with additional hardware and utilize the (6) holes towards the interior of the Front Panel. If you have purchased the KC Light Bar option, those brackets will be attached farther out towards the side rails, utilizing the 1/4"-20 hardware that attaches the Front Panel to the Side Rails. Shown below (FIG 8 & 9)

INSTALLATION INSTRUCTIONS



**2-Row Light Bar
Mounts
Fig 8**



**KC Light Bar Mounts
Fig 9**

Installing Roof Rack onto the Unit

Before lifting the roof rack up into position, remove all of the oem roof mounting hardware. There will be (2) torx bolts at the front of the roof. Then there will be (2) M8 Hex Head bolts on the b-pillars that attached the door nets. (If door nets have been removed, don't worry. There are new M8 bolts in the hardware kit). Last, there will be (2) more torx bolts at the rear of the roof. Remove all of these and set them aside. Shown below. (FIG. 10-12)

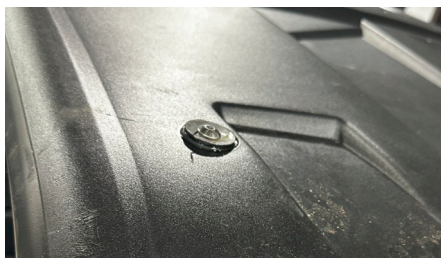


FIG 10



FIG 11



FIG 12

INSTALLATION INSTRUCTIONS

Installing Roof Rack onto the Unit

Next, with the help of someone else, lift the roof rack up and place it over the roof. Correctly position all of the mount points over their respective mount holes on the roof. Starting with the rear mount, replace the torx bolts that were previously removed from the rear of the roof through the Rear Mount Brackets. Leave them loose for now. **DO NOT** tighten all the way. Next, move onto the b-pillar and fasten the roof rack at the b-pillar with the (4) M8 Hex Head bolts provided in the kit. Again, leave these loose for now. Last, move onto the front of the roof rack. Replace the torx bolts that were previously removed from the front of the roof through the front mounts on the roof rack and back into the OEM roof. Make sure everything is aligned properly and make any desired adjustment at this time. Then go back and tighten **ALL** hardware. (FIG. 13-15)



FIG 13



FIG 14



FIG 15

Once all hardware is tight, install the THUMPER FAB logo tags at the rear of the roof rack on both sides using the rivets provided in the kit and a rivet tool. Shown below. (FIG. 16)



FIG 16

INSTALLATION INSTRUCTIONS

Installing Light Bar and Light Bar Wiring

First, start by placing the light bar in between the light bar mount brackets and use the hardware provided in the light bar kit to fasten the light bar into place. (FIG. 17)



FIG 17

Next, under the hood, locate an unused spot on your pulse bar and remove cover plug to allow for Thumper Fab harness to be plugged into pulse bar (FIG 18 & FIG 19).

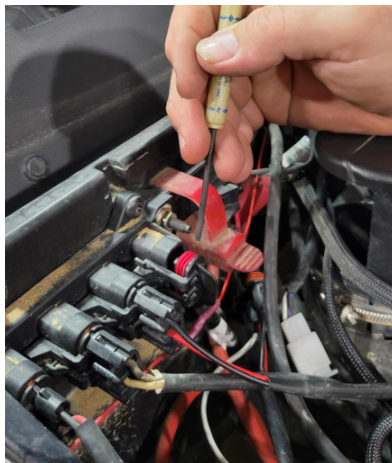


FIG 18

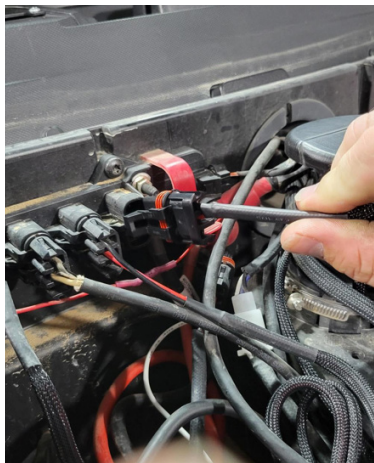


FIG 19

Next, Feed the 3 switch terminal wires through the grommet in the firewall to prepare for connection to the switch (FIG 20).

INSTALLATION INSTRUCTIONS

Route the switch wires under the dash through your selected switch port and hook terminals to the switch with blue on top, white in middle, and black on bottom (FIG 21 & 22).



FIG 20

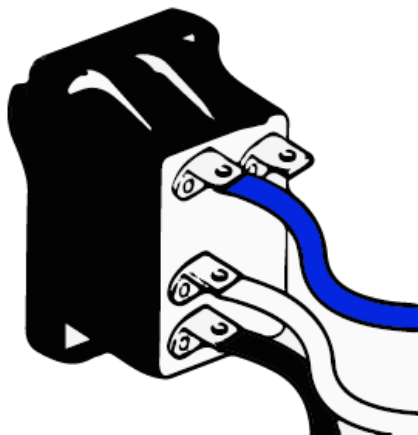


FIG 21

Snap switch into dash. Some minor trimming of the plastic switch opening in dash may be required. (FIG 22).



FIG 22

After all wiring in the dash and under the hood has been ran, route the wiring harness up the a-pillar and to the light bar on the roof. Plug the light bar into the harness. Last, clean up any loose wiring by bundling and securing it all neatly out of the way with zip ties. Make sure all plugs are securely plugged in.



Thumper Fab

5103 Elysian Fields Rd, Marshall, Tx 75672

Customer Service: 903-472-0928

www.thumperfab.com