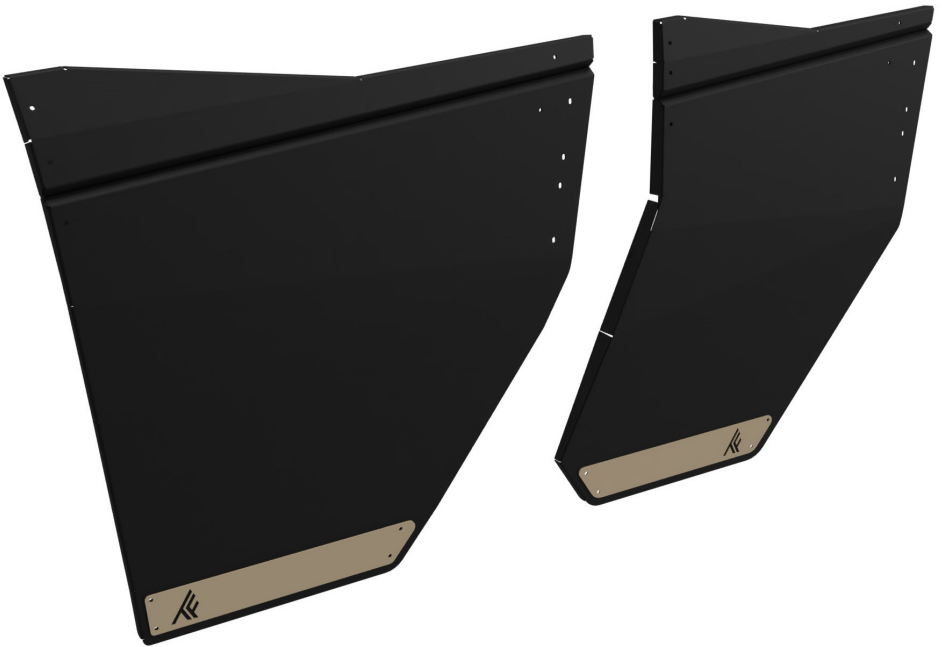


POLARIS RANGER

THUMPER FAB HALF DOORS

P/N: TF011702



Thumper Fab

5103 Elysian Fields Rd, Marshall, Tx 75672

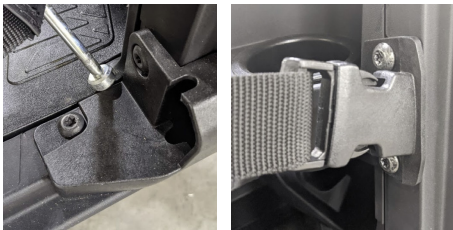
Customer Service: 903-472-0928

www.thumperfab.com

INSTALLATION INSTRUCTIONS

1. Remove all plastic pieces associated with stock net doors, as well as grab handles. To remove the grab handles you will need to slide your front seats forward. You will need 1/2", 3/8", and 10mm wrenches and a T-40 driver. After removing bolts holding grab handles to seat, replace to secure seat. Once everything has been removed, reinstall hardware with the exception of the hardware used for the buckle plates. Set that hardware aside for later. Be careful not to strip the bolt heads when removing buckles for rear nets, as the dealer may have used Loctite when assembling the vehicle. Spray WD-40 or another lubricant onto bolts to make removing them easier.

2. Remove plastic pieces on passenger side and cut with snips or dremel as shown. Set to the side. If your unit does not have this piece, skip this step and step 8. Use the provided template.



3. Using the stock hardware you previously removed, install the striker pins (6,7) as shown below. For front striker pins, install with the notches above the pin. The front pins are installed where the clips for the nets previously were. Attempt to center the striker pins. For the rear striker pins, install pins flush with plastic as shown below. The flange on the striker assembly should be bolted to the frame on the side closest to the outside of the bike. Snug the bolts to where the striker pin assembly does not move, but do not completely tighten them.



4. Use a 1/2" wrench to remove the bolts behind the seats shown below. Install front and rear hinge brackets (12,13,14,15) with removed hardware as shown. The hinge brackets are marked for front driver, front passenger, rear driver, and rear passenger positions. Install the brackets where the flange with the bolt hole is facing the vehicle front. **Firmly tighten.**



Bolts under seat that need to be removed to remove grab handles and reinstalled to secure seat pictured above.

POLARIS RANGER

THUMPER FAB HALF DOORS

P/N: TF011702



PARTS

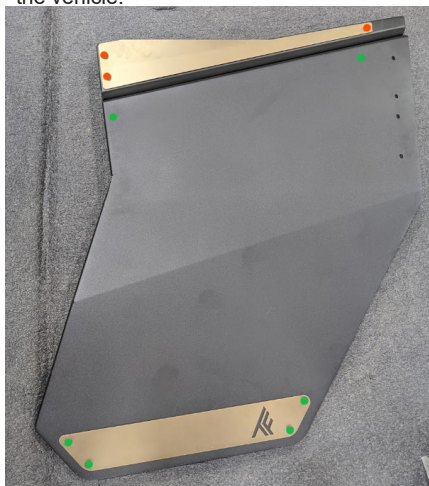
REF	QTY	PART DESCRIPTION	REF	QTY	PART DESCRIPTION	TOOLS NEEDED
1	1	Front Door Set (D+P)	11	2(1)	Hinge-Mount Door Bracket(P)	- 3/8" Wrench or Socket
2	1(0)	Rear Door Set (D+P)	12	1	Front Hinge Bracket (D)	- 7/16" Wrench or Socket
3	2(1)	Driver Side Rotary Latch	13	1	Front Hinge Bracket (P)	- 1/2" Wrench or Socket
4	2(1)	Passenger Side Rotary Latch	14	1(0)	Rear Hinge Bracket (D)	- 10 mm Wrench or Socket
6	2	Front Striker Assembly	15	1(0)	Rear Hinge Bracket (P)	- 4mm Allen Wrench
7	2(0)	Rear Striker Assembly	16	1	Front Accent Panel Set (D+P)	- T40 Torx Driver
8	2(1)	Bike-Side Hinge Bracket(D)	17	1(0)	Rear Accent Panel Set (D+P)	- Snips or Dremel
9	2(1)	Bike-Side Hinge Bracket(P)	18	2(1)	Hardware Kit	- Mallet
10	2(1)	Hinge-Mount Door Bracket(D)	19	2(1)	Trim Kit	- Grease
						- Something to Cut Trim

Numbers in parenthesis denote quantity for 3 seat Ranger set of only front doors.

See Insert for list of parts in kits and photo of parts.

INSTALLATION INSTRUCTIONS-Prepping doors for install

- Use a 3/8" and a 7/16" wrench to install lower accent panels with black 3/8" bolts (A) and corresponding nuts (B) into the 4 holes in each door pictured below in green. Hold the bolt with one wrench while you tighten the nut. If you purchased an accent panel set, you will need to remove the top 3 bolts on each door (pictured in red), align your top accent panel, and reinstall the bolts. For front door accent panels, the Thumper Fab logo should be towards the front of the vehicle, and for rear accent panels it should be towards the rear of the vehicle.
- Use a 4mm allen wrench and button head screws (C) to install latches (3,4) onto doors. Latches for the driver's side are marked 11788 while latches for the passenger's side are marked 11789. **Do not tighten.** Use a 10 mm wrench to install knobs (D) onto latches using M6 hex cap screw (E). You may want to put a drop of Loctite onto the cap screw to prevent it from coming loose due to vibration.



- Install all trim except the wide edge trim onto doors as shown in included handout. You can cut the trim to the specified lengths and then install it, or run the trim from point to point and cut at the end. You may need a mallet to tap trim onto door.

INSTALLATION INSTRUCTIONS - CONTINUED

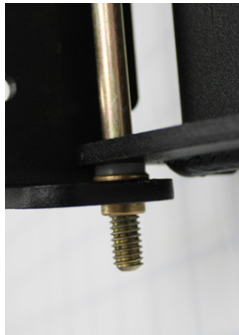
5. Apply grease to bronze bushings (**K**). Use a mallet to tap them into the hole on the top flange of the bike-side brackets (**8,9**) and into the hole on the bottom flange of the door side brackets (**10,11**).



6. Use 12" x 5/16" bolt (**I**) to attach door-side bracket to bike-side brackets. Brackets are marked (**D**) for driver's side and (**P**) for passenger's side. For the top connection, the order from top to bottom should be 12" x 5/16" bolt (**I**) — white flat washer (**J**) — bronze bushing (**K**) — bike-side bracket — bronze bushing (**K**) — 5/16" - 18 lock nut (**L**). You may need to use a mallet to tap bolt in.



Top View

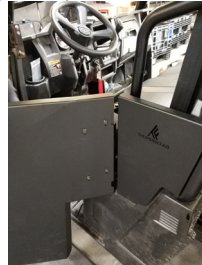


Bottom View

7. Remove the T-40 hardware pictured on the stock side plastic trim piece and then use the removed hardware to install the hinge assembly over the trim. Attach hinge assembly to the front and rear hinge brackets with 5/16" bolt (**F**), nut (**H**), and flat washer (**G**) using 1/2" wrenches. The washer should be placed on the bolt side. **Tighten firmly.**



8. Reinstall plastic pieces removed in step 2.



9. Use a 3/8" and 3/16" wrench and remaining black 3/8" bolts and corresponding nuts to attach door to door side hinge as shown below. **Do not tighten.**



Alternate Door Hinge Assembly - Top

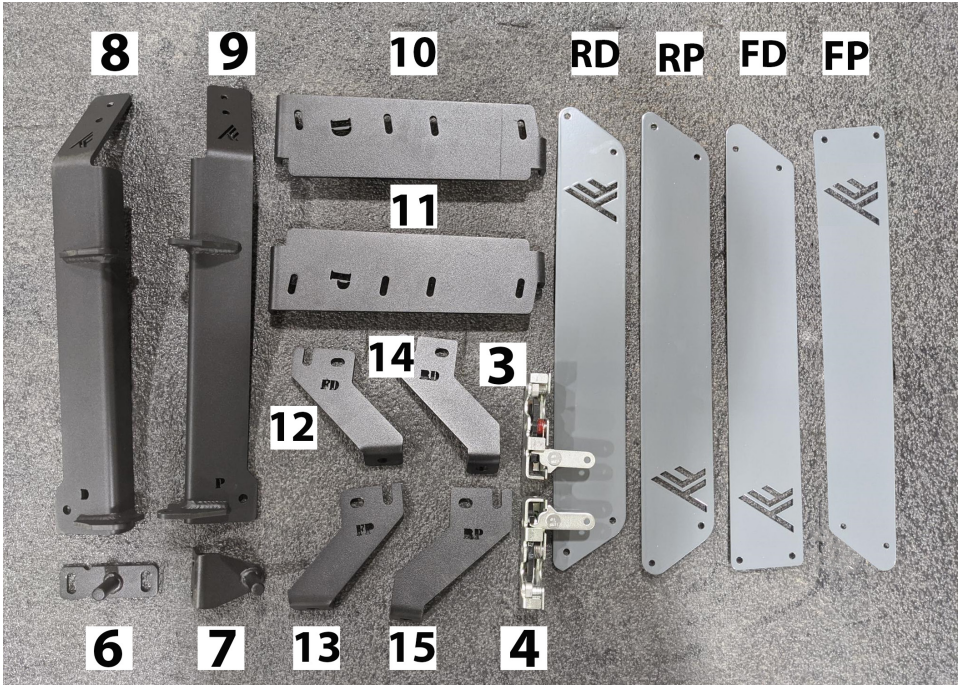


Alternate Door Hinge Assembly - Full



10. See alignment insert to properly align doors

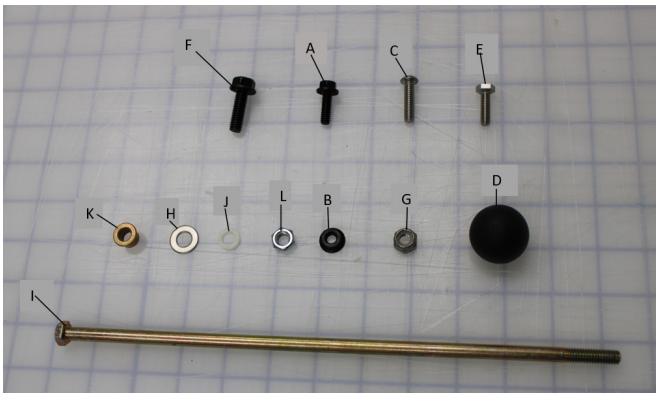
PART REFERENCES



HARDWARE KIT PARTS

REF	QTY	PART DESCRIPTION
A	16	1/4-20 X 3/4 Black Bolt
B	16	1/4-20 Black Hex Flange Nut
C	6	1/4-20 x 1 Button Head Screw
D	2	Ball Knob
E	2	M6-1 x 20 mm Hex Cap Screw
F	2	5/16 x 1 Black Hex Flange Bolt

REF	QTY	PART DESCRIPTION
G	2	5/16" Lock Nut
H	2	5/16" Flat Washer
I	2	5/16"-18 x 12" Bolt
J	4	White Flat Washer
K	4	Bronze Bushing
L	2	5/16" -18 Lock Nut



ALIGNMENT INSTRUCTIONS

1. Begin alignment by adjusting latch. Snug but do not firmly tighten the lowest bolt as far to the outside as possible, and the top bolt near the middle. Leave the middle bolt loose. See below.



2. Lift door and attempt to latch the door to the striker pin. As you push the door closed, you should hear two clicks from the latch. If the latch is fully engaged, the bottom of the black locking mechanism should be parallel with the rest of the latch as seen below. If the latch will not fully engage with the striker pin, you may need to adjust by repositioning the latch by adjusting the 3 bolts in step one. If it still will not engage, you may need to adjust the positioning of the latch pins.



3. Verify that the door is in line with the vehicle. The gap between the upper and lower skin of the door should line up with the gap in the vehicle.



4. With the door still closed, tighten bolts that hold the door to the hinge.



5. With the door still closed, hand tighten the bolts holding the door to the latch. Hold the bolt and hand tighten the nut.
6. Open door and look to see if it lowers significantly. While a very small drop from its closed position can be expected when opening the door, it should not be significant. If it is, the bolts holding the hinge brackets to the vehicle frame or the bolts holding the door to the hinge assembly may not be tight enough.
7. Tighten the bolts holding the striker pin assembly to the vehicle.
8. Make sure the door latches and opens easily. It should require very little force for the latch to fully engage with the striker pin. If you need to use significant force to get the door to latch, you will need to realign it.
9. Install the wide edge trim on the edge of the hinge bracket as shown below. The piece of trim should be ~9 1/2" long.



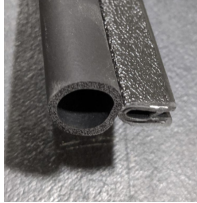
FOAM INSTALLATION - FRONT DOORS

NARROW EDGE TRIM



May be marked with the numbers 32

TOP D FOAM



May be marked with the numbers 32C

SIDE D FOAM

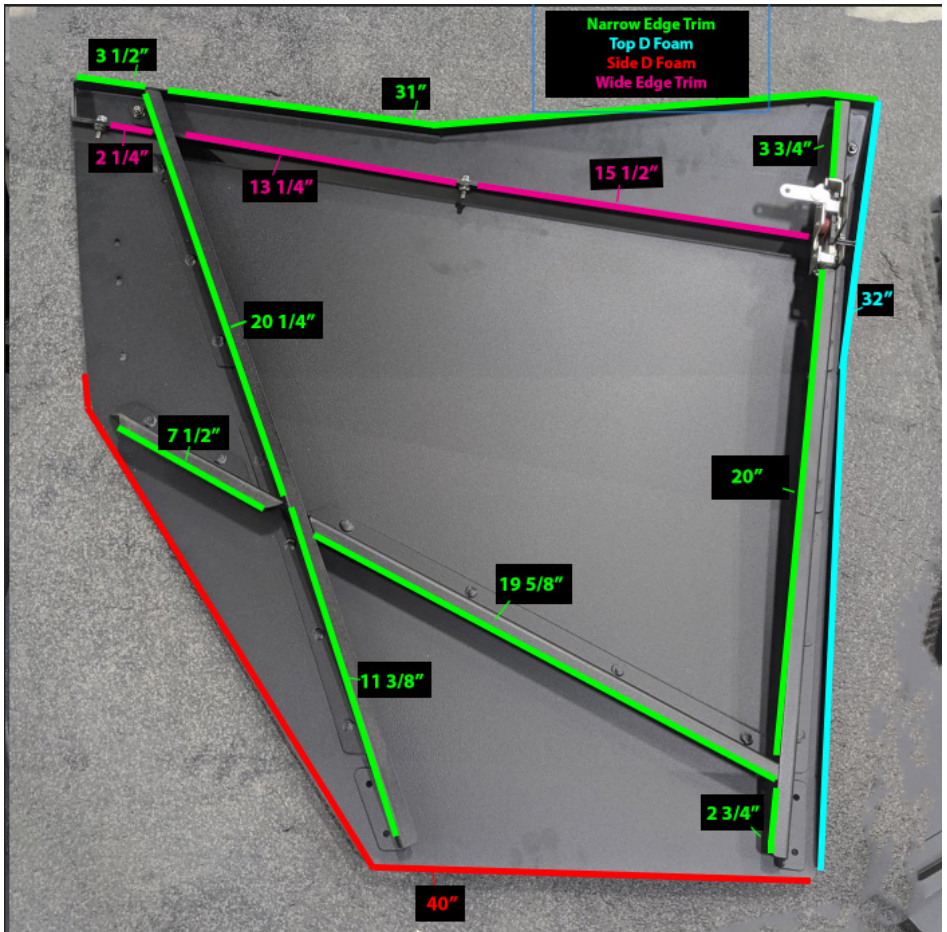


May be marked with the numbers 32A

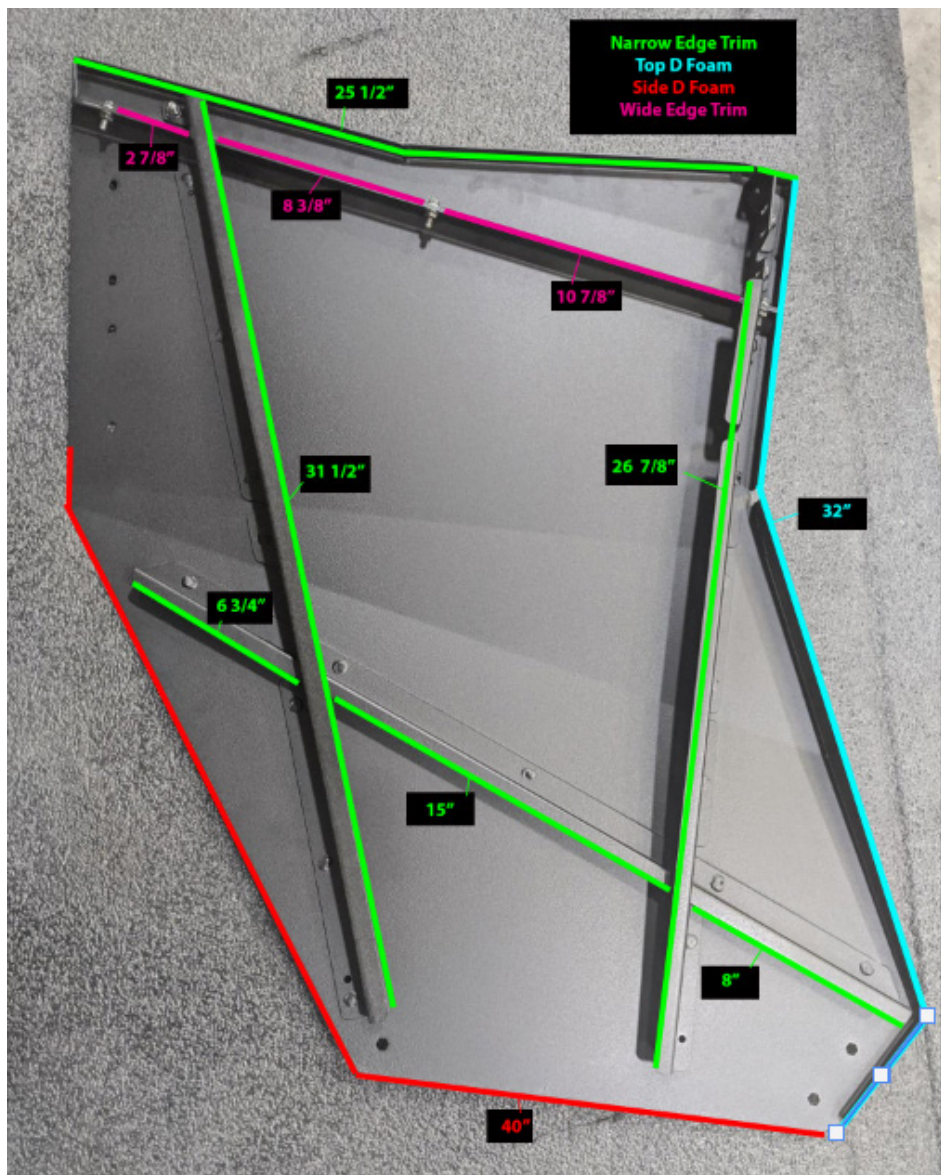
WIDE EDGE TRIM

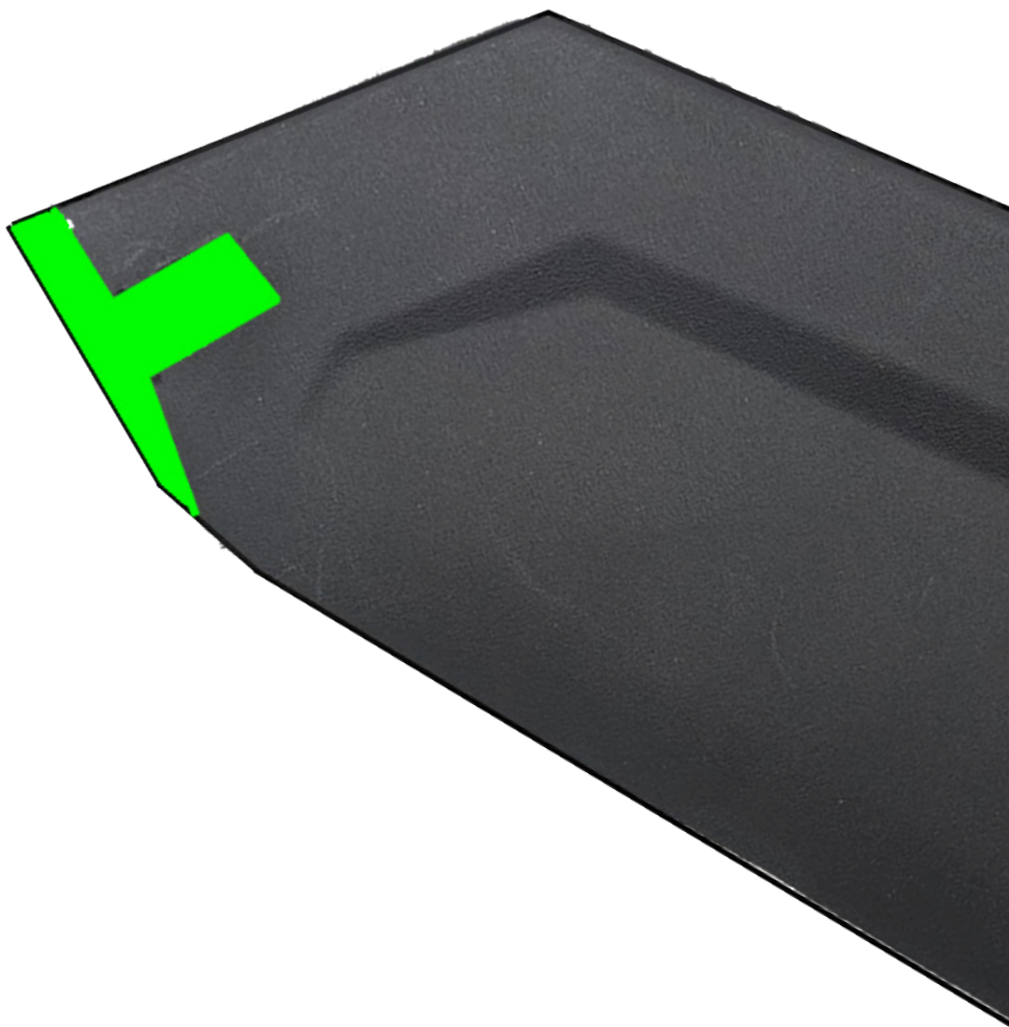


May be marked with the numbers 3/16

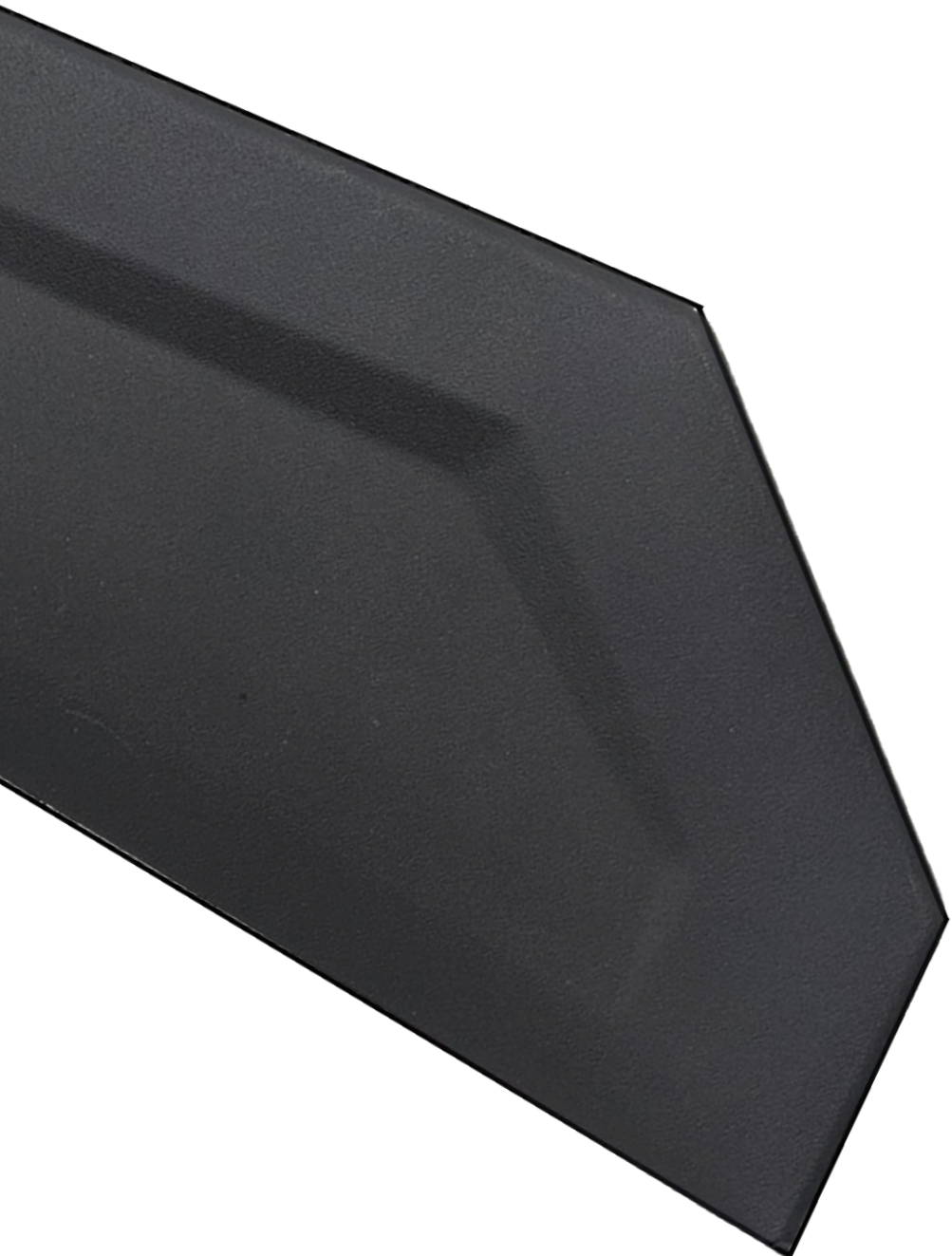


FOAM INSTALLATION - REAR DOORS





TEMPLATE FOR PLASTIC TRIM





THUMPER FAB

Thumper Fab

5103 Elysian Fields Rd, Marshall, Tx 75672

Customer Service: 903-472-0928

www.thumperfab.com