



THUMPER FAB

Aluminum Audio Roofs • Roll Cages • UTV Accessories

POLARIS / RANGER Headache Rack

SKU: TF011601



Thumper Fab

5103 Elysian Fields Rd, Marshall, TX 75672

Customer Service: 903-472-0928

www.thumperfab.com

Ver. 0824

Polaris / Ranger Headache Rack

SKU: TF011601.A



PARTS

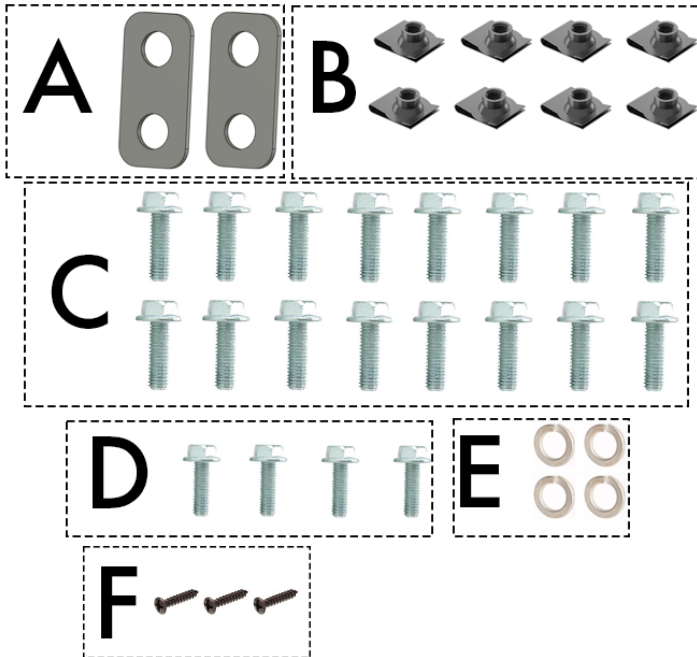
REF	QTY	HARDWARE
1	1	Headache Rack
2	1	Accent Panel
3	1	Winch
Hardware Kit		
A	2	Spacers
B	8	Clips
C	16	M8-1.25 x 25mm Flange Bolts
D	4	M6-1.0 x 20mm Flange Bolts
E	4	M6 Lock Washers
F	3	Pointed Screws
G	2	Zip Ties

TOOLS

- 10 mm Socket
- 13 mm Socket
- 13 mm wrench

BEFORE YOU BEGIN

If you do not feel comfortable installing your Thumper Fab HEADACHE RACK, please see your nearest POLARIS® Dealer for installation.



INSTALLATION INSTRUCTIONS

Install Accent Panel

Fasten the accent panel to the headache rack using 8 X M8-1.25 x 25mm flange bolts (C). Tighten evenly with 13 mm socket (FIG 1).



Fig 1 - Install Accent Panel onto Headache Rack with 13mm Socket

Install Fairlead

Remove the fairlead from supplied box and slide it into place under the winch cover plate bull bar. Use the 2 short M8x1.25 bolts, M8 lock washer, and M8x1.25 nuts supplied in winch box along with 13mm socket and 13mm wrench to fasten fairlead to headache rack (FIG 2).



Fig 2 - Fasten fairlead to Headache Rack with 13mm Socket

INSTALLATION INSTRUCTIONS

Install Winch

Run winch cable through hole in winch cover plate and through fairlead to prepare to fasten the winch to the winch base plate. Be careful not to pinch cable (**FIG 3**).



FIG 3 - Thread Winch Cable through Fairlead

Fasten Winch

Fasten the winch to the winch base plate 4 x M6-1.0 x 20mm flange bolts (**D**) along with M6 lock washers (**E**) using 10mm socket (**FIG 4**).



FIG 4 - Fasten Winch to Winch Base Plate with 10mm Socket

INSTALLATION INSTRUCTIONS

Clip Spacers on Rear Cage Brackets

If you do not have (OEM) full doors you will also add the spacer (A) between the factory accessory bracket and the headache rack bracket on the upper bracket. Attach 2 clips (B) on each factory accessory bracket on the rear of the cage. If you have full doors these spacers (A) and the clips (B) are not needed on the upper bracket, you will reuse the factory nut plate (do not use clips on the upper bracket with full doors) (FIG 5).

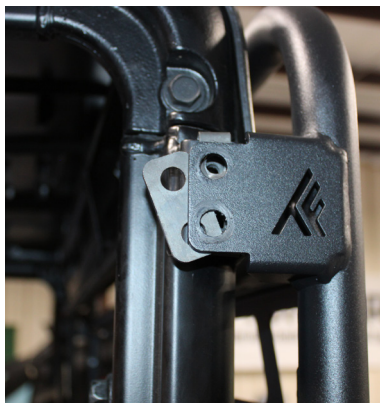


FIG 5 - Install clips on lower brackets, install clips and spacers on the upper if you do not have full doors

Install Headache Rack

Hold the headache rack in place and use the 8 X M8-1.25 x 25mm (C) flange bolts and 13mm socket to fasten the headache rack to the upper holes in the roll cage. Do not fully tighten until all bolts have been started. Once they have all been started, tighten all bolts (FIG 6).



FIG 6 - Fasten Headache Rack Bolts using 13mm Socket

INSTALLATION INSTRUCTIONS

Winch Wiring

Do not refer to wiring instructions contained in the winch box as it is not suitable for this application. Reference the following wiring diagram for wiring instructions for the winch (**FIG 7**).

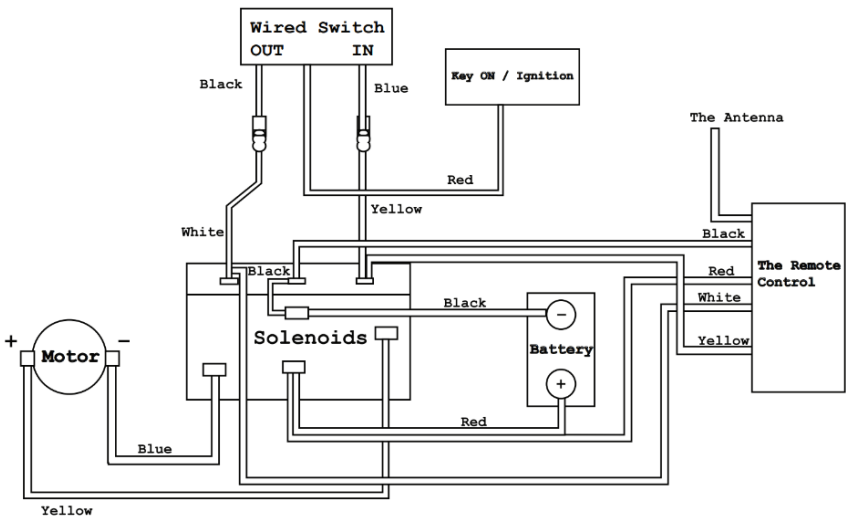


FIG 7 - Winch Wiring Diagram

INSTALLATION INSTRUCTIONS

Winch Wiring

Mount the remote switch for the winch to the accent panel (**FIG 8**). The winch contactor can be mounted in the battery box using supplied bracket using 3 x pointed screws (**F**) (**FIG 9**). **Note:** Install vehicle used was a 2021 Ranger XP1000, wire routing may vary for different Ranger submodels.



FIG 8 - Fasten switch to accent panel



FIG 9 - Fasten winch contactor to inside of battery box using supplied bracket

Install Cube Lights (Optional)

Attach cube lights to the mount brackets using the hardware and brackets inside the light box (**FIG 10 & FIG 11**).

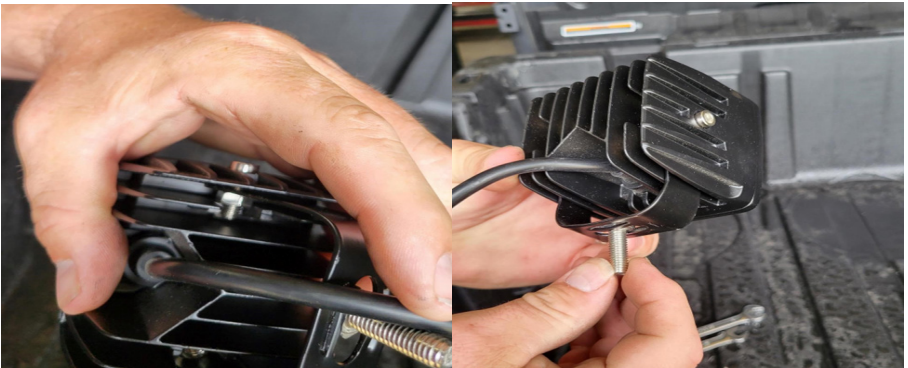


FIG 10 & FIG 11 - Fasten Cube Light to Mount Bracket

INSTALLATION INSTRUCTIONS

Using the hardware provided in the cube light box, fasten the cube light to the headache rack. Use the provided slots found in the winch mount plate to zip tie the cube light wires to the headache rack (**FIG 12 & FIG 13**).



FIG 12 - Fasten cube light to Headache Rack



FIG 13 - Zip Tie Cube Light wire pigtail to Headache Rack

Wiring Harness

A wiring harness and switch are provided to power your cube lights. (**FIG 14**).

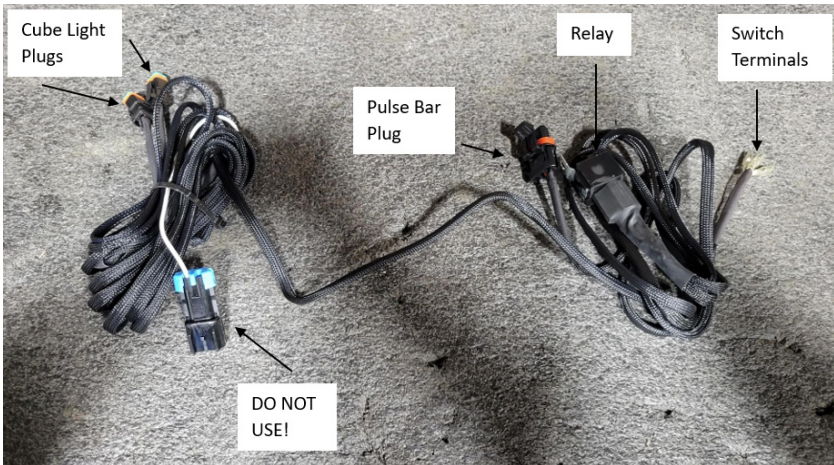


FIG 14 - Break down of Wiring Harness plugs and terminals

INSTALLATION INSTRUCTIONS

Under front hood locate an unused spot on your pulse bar and remove cover plug to allow for Thumper Fab harness to be plugged into pulse bar (**FIG 15 & FIG 16**).



FIG 15 - Remove unused Pulse Bar Plug



FIG 16 - Plug in Thumper Fab pulse bar pigtail

Feed cube light pigtails down through hole shown below and route the wires to the back of the unit (**FIG 17**).

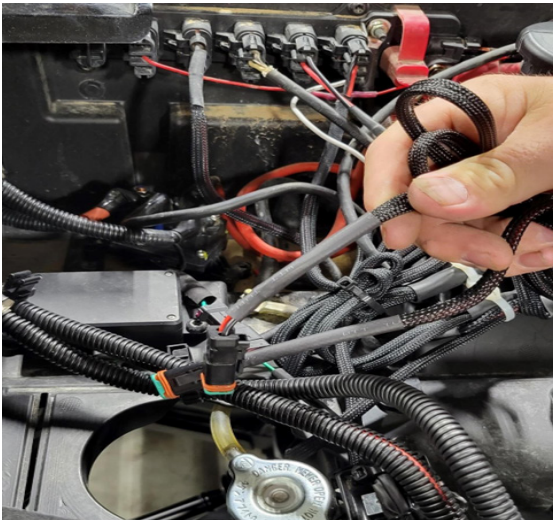


FIG 17 - Route Cube Light plugs from under the hood to the rear of the Ranger

INSTALLATION INSTRUCTIONS

Feed the 3 switch terminal wires through the grommet in the firewall to prepare for connection to switch (**FIG 18**).



FIG 18 - Feed switch terminals through grommet in firewall

Route the switch wires under the dash through your selected switch port and hook terminals to the switch with blue on top, white in middle, and black on bottom. Once wires are connected to switch, snap switch into place in dash (**FIG 19 & FIG 20**).

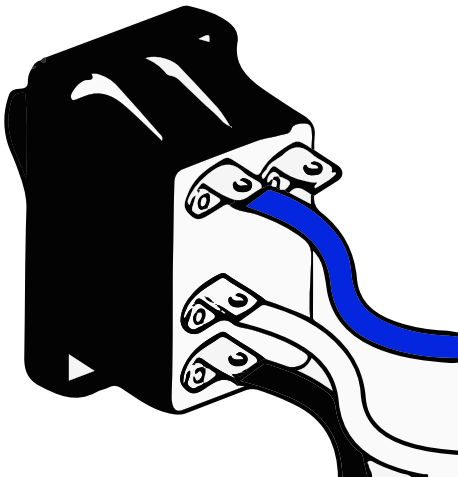


FIG 19 - Slide wires onto switch terminals



FIG 20 - Snap switch into place in dash

The installation of products sold or manufactured by Thumper Fab including, but not limited to suspension components such as lift kits, control arms, frame stiffener kits, roofs, roll cages, and tires that exceed the original specifications for the vehicle, may change the vehicle's center of gravity and handling characteristics both on- and off-road. You are aware that the installation of tires that are larger than original vehicle specifications may reduce the effectiveness of the braking system. Use of these products may place added stress to the original factory vehicle components which could cause them to weaken or possibly fail.

Products sold or manufactured by Thumper Fab are intended for off-road use only. Operation of a vehicle modified with these products on a road could result in serious bodily injury or death, and such operation may violate the laws of your state or municipality. You agree to operate your vehicle exclusively in the manner intended by the vehicle manufacturer. You agree that failure to safely and reasonably operate your vehicle could result in serious bodily injury or death, and that, as a result of installation of this product(s) to your vehicle, extreme care must be taken to prevent vehicle rollover or loss of control, which may be more likely to occur as a result of said modifications. You will avoid unsafe maneuvers, including sudden sharp turns or other abrupt maneuvers, which could make a vehicular accident more likely. You understand that Thumper Fab is not responsible or liable for any damages or any injuries to yourself or your passengers that could occur upon possible accidents due to driver error, incorrect installations, bad judgment, incompatibility with other aftermarket accessories or natural disasters to the fullest extent allowable by law. You will have all vehicle occupants fasten seatbelts, if equipped, and wear proper safety equipment, such as DOT approved helmet and eye protection prior to operating the vehicle. You understand and acknowledge that failure to wear proper safety equipment may increase the risk of serious bodily injury or death to yourself and any passengers.

Proper installation of products sold or manufactured by Thumper Fab requires knowledge of the factory recommended procedures for removal and installation of original equipment components. Installation of these products without proper knowledge and experience may affect the performance of these components and the safety of the vehicle and cause serious bodily injury or death. It is strongly recommended that a certified mechanic familiar with the installation of similar components perform the product(s) installation.

Prior to installing any products sold or manufactured by Thumper Fab, you will perform or cause to be performed an inspection of their vehicle to confirm its condition is suitable for the installation of these products. A proper inspection of the vehicle includes confirmation that the vehicle has not been in a collision and is free of corrosion. If the vehicle is suspected to have been in a collision or misused, or is otherwise unsuitable for modification, you will not install the product(s). You will continue to inspect the vehicle prior to each use to confirm its condition is suitable for its intended use, and you acknowledge that the failure to do so may result in serious bodily injury or death, as well as damage to the vehicle itself.

You will install any warning labels provided with the product so it may be prominently seen by yourself and all passengers. You will notify all passengers of the modifications performed to your vehicle prior to operation.

Insurance companies may handle coverage of a modified vehicle differently. Please check with your insurance carrier prior to modifying the vehicle to ensure your coverage remains sufficient. Installation of this product(s) may void your vehicle warranty. If this is a concern, please check with the manufacturer or dealer before purchase or installation of this product(s).



THUMPER FAB

Thumper Fab

5103 Elysian Fields Rd, Marshall, TX 75672

Customer Service: 903-472-0928

www.thumperfab.com