



# THUMPER FAB

Aluminum Audio Roofs ♦ Roll Cages ♦ UTV Accessories

## RANGER XP1000 3 Inch Bracket Lift

SKU: TF011303



### Thumper Fab

5103 Elysian Fields Rd, Marshall, TX 75672

Customer Service: 903-472-0928

[www.thumperfab.com](http://www.thumperfab.com)

Ver. 0622

# RANGER XP1000

## 3 Inch Bracket Lift

SKU: TF011303



### PARTS

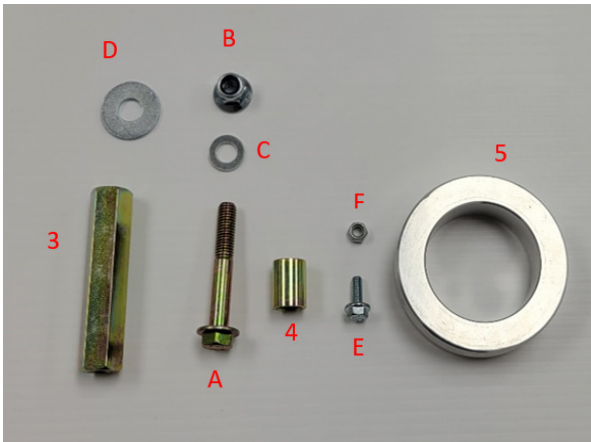
REF	QTY	DESCRIPTION
1	4	Front Lift Bracket
2	4	Rear Lift Bracket
3	2	Rear Sway Bar Extension
4	8	Short Spacer
5	2	Front Spring Spacer
6	1	Logo Plate
7	1	Backing Plate
8	2	Spacer Sleeve
<b>Hardware Kit</b>		
A	14	M10-1.5 x 65mm Flange Bolt
B	12	M10-1.5 Flange Lock Nut
C	22	M10 Flat Washer
D	2	7/16" Flat Washer
E	2	M6-1.0 x 16mm Flange Bolt
F	2	M6-1.0 Lock Nuts

### TOOLS

- Ratchet
- 10mm Socket
- 15mm Socket
- 8mm Wrench
- 10mm Wrench
- 15mm Wrench
- 3/4" Wrench
- Spring Compressor

### BEFORE YOU BEGIN

If you do not feel comfortable installing your **Thumper Fab** Lift Kit please see your nearest Polaris® Dealer for installation.



# INSTALLATION INSTRUCTIONS

**NOTE:** If you have an electric bed lift on your Polaris Ranger place smaller rear lift bracket in location on passenger rear. You may need to trim the bracket slightly depending on bed lift clearance.

**NOTE:** 1.5" SPACERS ARE REQUIRED IN THE REAR IF YOU ARE USING FACTORY RANGER WHEELS.

**NOTE:** If you are utilizing after market rear axles, check for clearance

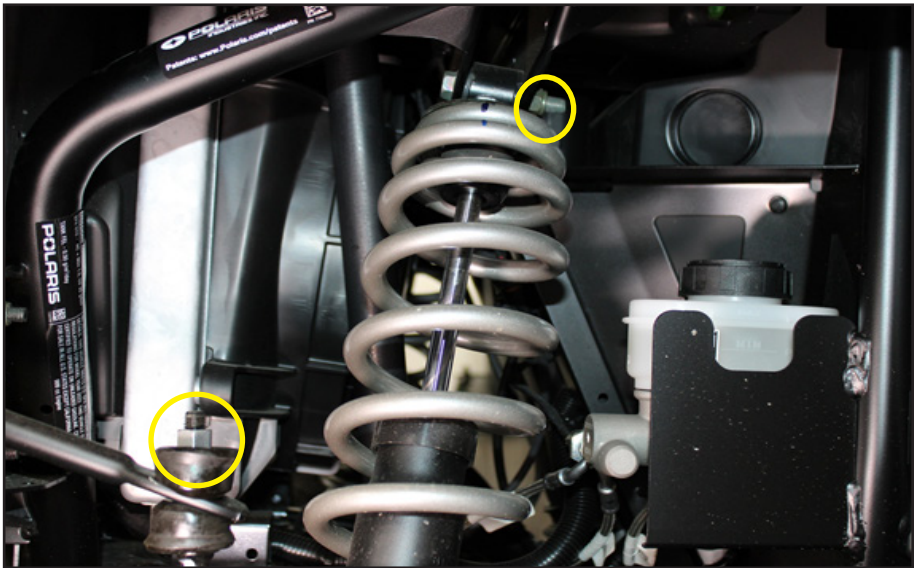
## FRONT LIFT INSTALLATION

### Remove the Front Tires

Place the Unit into park. Use a jack and jackstands to lift and secure the unit making sure the Unit is secured in a way that the control arms can hang down freely. One the Unit is lifted and secured, remove the tires.

### Disconnect Front Sway Bar

Disconnect the front sway bar connecting rods and remove the rubber bushings on both sides of the Unit using a 15mm socket. Remove upper and lower shock mount bolts on both sides (**FIG 1**)



**FIG 1 - Removal of Sway Bar Connection and Front Shocks using 15mm Socket and 15mm Wrench**

# INSTALLATION INSTRUCTIONS

## Spring Spacer Installation

Depending on which shocks are installed on the unit, you may or may not need the spacer sleeve. Before installing aluminum spring spacer, attempt to slide spacer sleeve onto shock body. If it slides down, install spring spacer over sleeve before reinstalling shock. If the spacer sleeve does not fit over the shock body, it is not needed and only install the spring spacer before reinstalling the spring.



FIG 2 - Remove Spring from Shock

## Install Spring Spacer

Place the spring spacer over the shock and place spring on top of spacer. Use spring compressor to compress spring enough to reinstall the retaining clip (FIG 3). If your unit has smaller shocks, slide the spacer sleeve over the shock first, then slide the spring spacer over the spacer sleeve (FIG 4).



FIG 3 - Install Spring Spacer and Reinstall Spring and Retaining Clip



FIG 4 - Install Spacer Sleeve for Smaller Shocks

# INSTALLATION INSTRUCTIONS

## Front Lift Bracket Installation

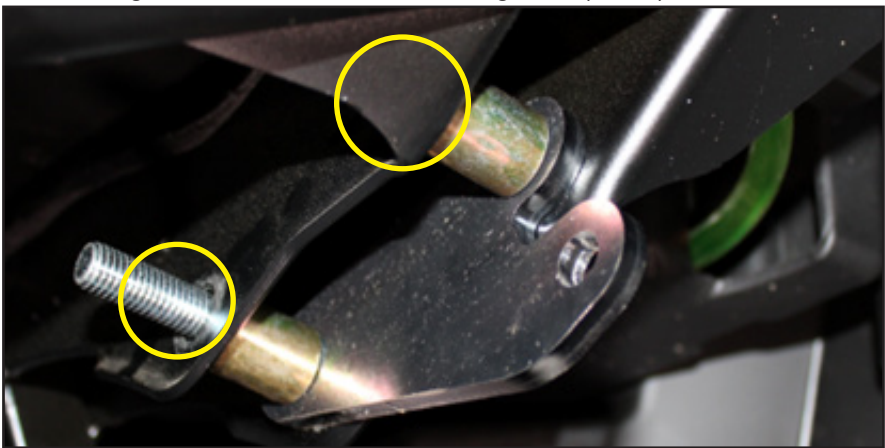
### Placement of Front Lift Bracket

The slotted portion of the front lift bracket (1) goes to the inside of the frame and the small ear goes to the top. Insert M10-1.5 x 65mm flange bolt (A) through frame and the lift bracket through short spacer (4) (FIG 5).



**FIG 5 - Install Front Lift Bracket lower Bolt**

Insert M10-1.5 x 65mm flange bolt (A) through upper frame hole and the lift bracket. Install short spacer (4) between the lift bracket and the right frame tab. Install 2 x M10 washers on outside of frame before placing remaining front lift bracket over mounting bolts (FIG 6).



**FIG 6 - Install Front Lift Bracket upper Bolt**

# INSTALLATION INSTRUCTIONS

## Installation of Front Lift Bracket

Slide a front lift bracket over the ends of the M10-1.5 x 65mm flange bolts (A) mounting bolts followed by an M10-1.5 flange lock nut (B) (FIG 7).



FIG 7 - Install Front Lift Bracket

Reconnect the top of the shock with M10-1.5 x 65mm flange bolt (A) through front lift brackets and shock bushing. Thread M10-1.5 flange lock nut (B) on end of flange bolt (A), once started tighten all mounting bolts until tight. (FIG 8).



FIG 8 - Reinstall Upper Shock Mount and tighten Flange Bolts (A) using 15mm Socket and 15mm Wrench

## INSTALLATION INSTRUCTIONS

### Reconnect Sway Bar

Slide 3 X 10mm flat washers (C) over the end of each of the sway bar rods. Reinstall rubber bushings and sway bars to the sway bar rods and fasten until tight (FIG 9).

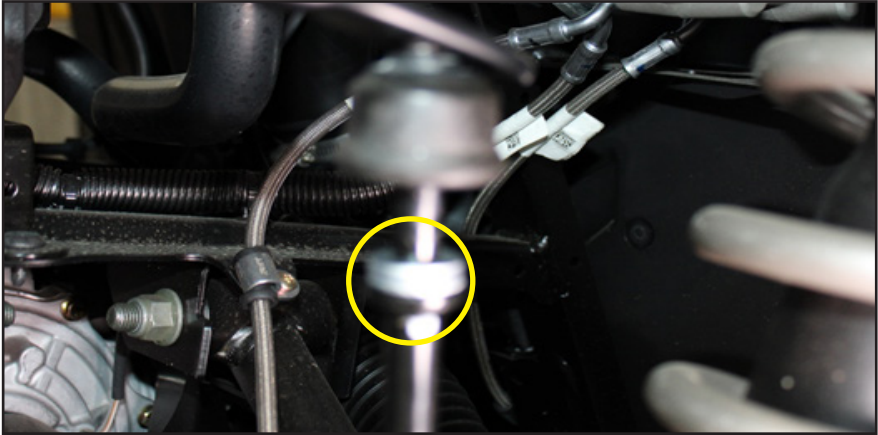


FIG 9 - Reinstall Front Sway Bar

With controls arms fully extended, check for clearance between CV axle boot and lower control arm mounting tabs. Slightly trim control arm mounting tab if necessary to gain necessary clearance (FIG 10).

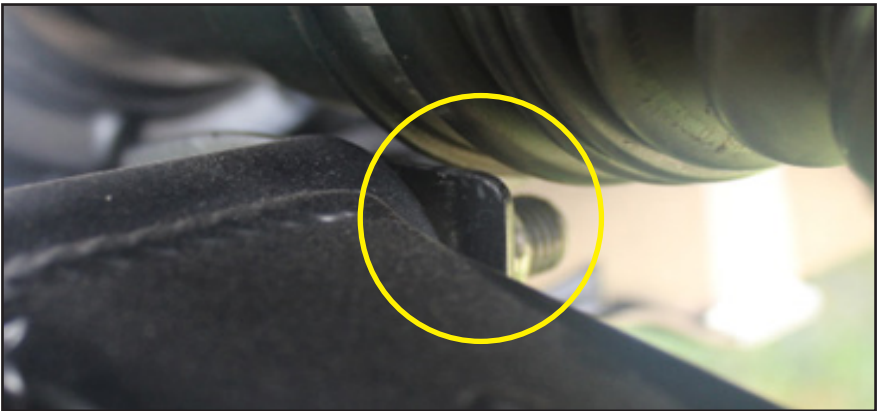


FIG 10 - Check for clearance for CV axle boot

## REAR LIFT INSTALLATION

### Disconnect Rear Sway Bar

Place the Unit into park and jack the rear end up until the rear wheels are off the ground. Use jackstands to support the vehicle safely and remove the rear wheels. Use a 15mm socket to remove the nuts that secure the sway bar to the sway bar rod. Use 8mm wrench to prevent sway bar rod from spinning. Pivot the sway bar out of the way and remove rubber bushings (FIG 11).



FIG 11 - Remove Rear Sway Bar Hex Nuts using 15mm Socket

The removed upper sway bar bushing contains a factory nut attached to it. Remove the nut and replace it with a 7/16" flat washer (D) Thread and tighten rear sway bar extension bracket onto sway bar rod (FIG 12).



FIG 12 - Install Rear Sway Bar Extension using 3/4" Wrench



## INSTALLATION INSTRUCTIONS

### Loosely Reconnect Rear Sway Bar

Install M10-1.5 x 65mm flange bolt (A) through upper bushing, sway bar, and lower bushing. Thread flange bolt (A) into rear sway bar extension, do not fully tighten. (FIG 13).



FIG 13 - Reinstall Rear Sway Bar loosely fastened

### Remove Rear Shock Upper Mounting Bolt

Remove the rear shock upper mounting bolt using 15mm socket and 15mm wrench. Allow shocks to hang down on both sides of the unit (FIG 14).

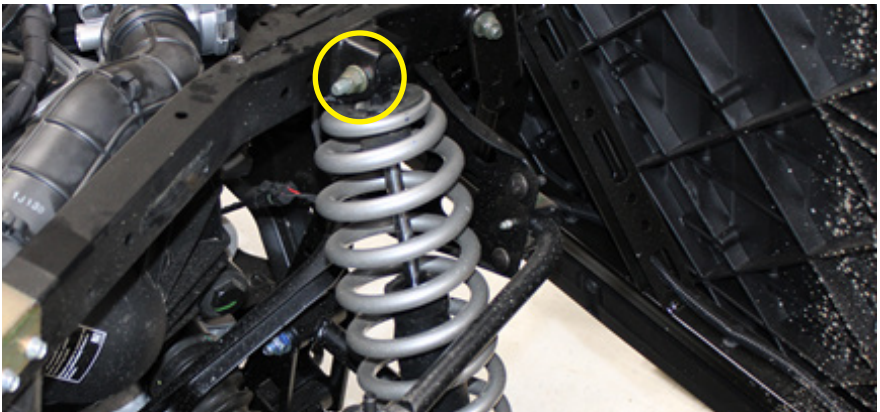


FIG 14 - Remove Rear Shock Upper Mounting Bolt using 15mm Socket and 15mm Wrench

## INSTALLATION INSTRUCTIONS

### Install Rear Lift Brackets

Locate the rear lift bracket (2) to the outside of the rear shock mount (The side that faces the front of the UTV). Insert 2 X M10-1.5 x 65mm flange bolts (A) through the rear lift bracket (2) and place 2 X M10 flat washers (C) over bolts. Insert flange bolts (A) through shock mount tabs into short spacer (4) (FIG 15).



FIG 15 - Install Rear Lift Bracket

Install matching rear lift bracket (2) inside the shock mount tab using M10-1.5 lock nuts (B) to loosley fasten brackets to frame (FIG 16).

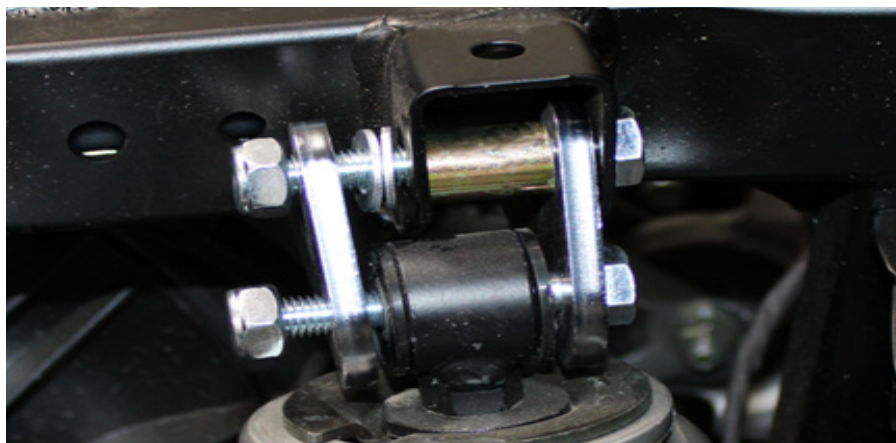


FIG 16 - Loosley fasten Rear Lift Brackets to Frame

# INSTALLATION INSTRUCTIONS

## Installation of Logo Plate

The logo plate (6) will be mounted under the bed of the Ranger in the spot shown using the backing plate (7) to firmly hold the logo plate (6) in location once hardware is installed and tight.

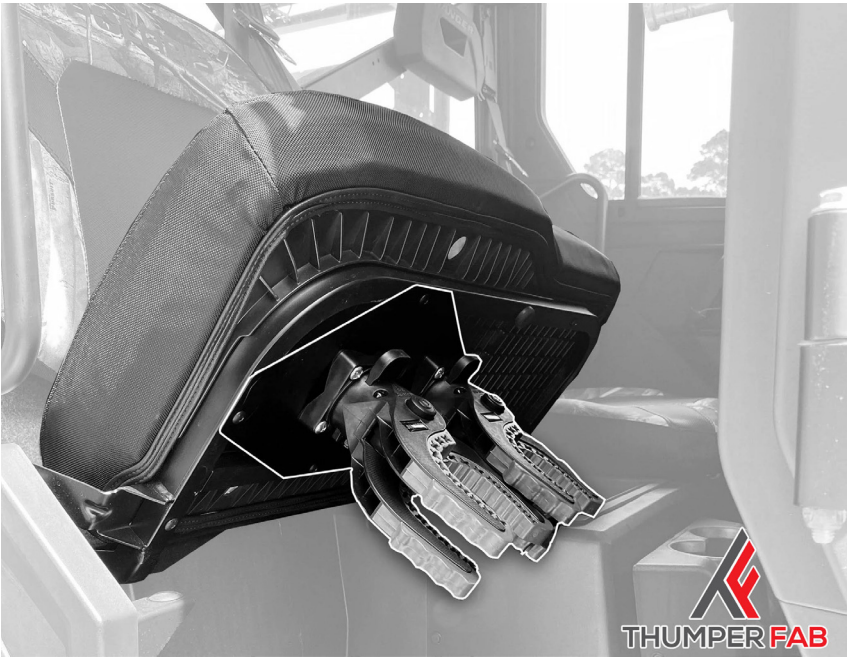


Mount the logo plate and backing plate and 2 X M6-1.0 x 16mm flange bolts (E) and 2 X M6-1.0 lock nuts (F). Use a 10mm wrench and 10mm socket to tighten down bolts (E) and nuts (F) (FIG 17).



**FIG 17 - Fasten logo plate to Rear Bed Frame using 10mm Socket and 10mm Wrench**

# If you're enjoying your Ranger Lift, check out these other Thumpin' accessories!



## TF010901 Ranger Hidden Gun Mount



## **TF010002 Ranger Bolt-on Subframe Stiffener / Gusset Kit**

The installation of products sold or manufactured by Thumper Fab including, but not limited to suspension components such as lift kits, control arms, frame stiffener kits, roofs, roll cages, and tires that exceed the original specifications for the vehicle, may change the vehicle's center of gravity and handling characteristics both on- and off-road. You are aware that the installation of tires that are larger than original vehicle specifications may reduce the effectiveness of the braking system. Use of these products may place added stress to the original factory vehicle components which could cause them to weaken or possibly fail.

Products sold or manufactured by Thumper Fab are intended for off-road use only. Operation of a vehicle modified with these products on a road could result in serious bodily injury or death, and such operation may violate the laws of your state or municipality. You agree to operate your vehicle exclusively in the manner intended by the vehicle manufacturer. You agree that failure to safely and reasonably operate your vehicle could result in serious bodily injury or death, and that, as a result of installation of this product(s) to your vehicle, extreme care must be taken to prevent vehicle rollover or loss of control, which may be more likely to occur as a result of said modifications. You will avoid unsafe maneuvers, including sudden sharp turns or other abrupt maneuvers, which could make a vehicular accident more likely. You understand that Thumper Fab is not responsible or liable for any damages or any injuries to yourself or your passengers that could occur upon possible accidents due to driver error, incorrect installations, bad judgment, incompatibility with other aftermarket accessories or natural disasters to the fullest extent allowable by law. You will have all vehicle occupants fasten seatbelts, if equipped, and wear proper safety equipment, such as DOT approved helmet and eye protection prior to operating the vehicle. You understand and acknowledge that failure to wear proper safety equipment may increase the risk of serious bodily injury or death to yourself and any passengers.

Proper installation of products sold or manufactured by Thumper Fab requires knowledge of the factory recommended procedures for removal and installation of original equipment components. Installation of these products without proper knowledge and experience may affect the performance of these components and the safety of the vehicle and cause serious bodily injury or death. It is strongly recommended that a certified mechanic familiar with the installation of similar components perform the product(s) installation.

Prior to installing any products sold or manufactured by Thumper Fab, you will perform or cause to be performed an inspection of their vehicle to confirm its condition is suitable for the installation of these products. A proper inspection of the vehicle includes confirmation that the vehicle has not been in a collision and is free of corrosion. If the vehicle is suspected to have been in a collision or misused, or is otherwise unsuitable for modification, you will not install the product(s). You will continue to inspect the vehicle prior to each use to confirm its condition is suitable for its intended use, and you acknowledge that the failure to do so may result in serious bodily injury or death, as well as damage to the vehicle itself.

You will install any warning labels provided with the product so it may be prominently seen by yourself and all passengers. You will notify all passengers of the modifications performed to your vehicle prior to operation.

Insurance companies may handle coverage of a modified vehicle differently. Please check with your insurance carrier prior to modifying the vehicle to ensure your coverage remains sufficient.

Installation of this product(s) may void your vehicle warranty. If this is a concern, please check with the manufacturer or dealer before purchase or installation of this product(s).



**THUMPER FAB**

**Thumper Fab**

5103 Elysian Fields Rd, Marshall, TX 75672

Customer Service: 903-472-0928

[www.thumperfab.com](http://www.thumperfab.com)