

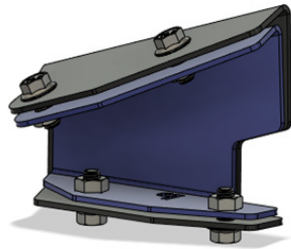
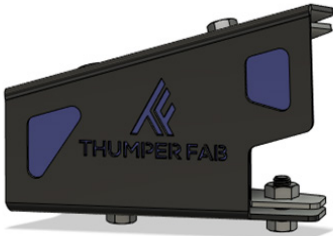


THUMPER FAB

Aluminum Audio Roofs • Roll Cages • UTV Accessories

Polaris Ranger XP Rear Chassis Brace

SKU: TF010904



Thumper Fab

5103 Elysian Fields Rd, Marshall, Tx 75672

Customer Service: 903-472-0928

www.thumperfab.com

Ver. 0522

Polaris Ranger XP

Rear Chassis Brace

SKU: TF010904



PARTS

REF	QTY	DESCRIPTION
1	1	Outer Chassis Brace Driver
2	1	Outer Chassis Brace Passenger
3	1	Inner Chassis Brace Driver
4	1	Inner Chassis Brace Passenger
HARDWARE		
A	8	M10 x 1.5 x 20 mm Flange Bolt

TOOLS

- Drill
- 7/16" Drill Bit
- Ratchet
- 15mm Socket or Wrench

BEFORE YOU BEGIN

If you do not feel comfortable installing your **Thumper Fab** Rear Chassis Brace, please see your nearest Polaris Dealer for installation.

INSTALLATION INSTRUCTIONS

Drill Install Holes for Driver and Passenger Side

Slide the black outer brace over the rear frame and place upper M10-1.5 x 20 mm flange bolts (A) into existing frame holes to align bracket. Drill holes through lower mounting holes in black outer brace through rear frame of unit using 7/16" drill bit (FIG 1).



FIG 1 - Use 7/16" Drill Bit to drill holes in bottom of frame using Bracket (1) as template

INSTALLATION INSTRUCTIONS

Install Inner and Outer Chassis Brace

Slide the inner chassis brace (3) into location in rear frame, then slide outer chassis brace (1) over rear frame. Using M10 x 1.5 x 20 mm flange bolts (A) to tighten outer chassis brace into weld nuts provided in inner chassis brace using ratchet and 15mm socket (FIG 2).

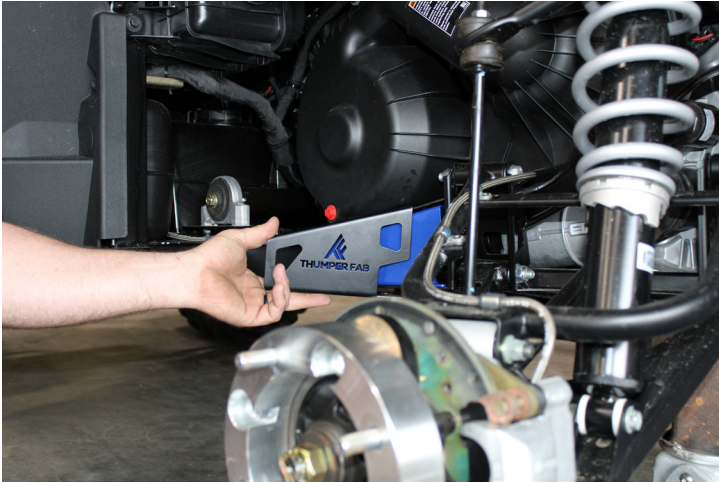


FIG 2 - Use Ratchet & 15mm Socket or Wrench to Fasten Outer Chassis Brace (1) to Inner Chassis Brace (3) through Frame

Enjoy your new Thumpin' accessories!





THUMPER FAB

Thumper Fab

5103 Elysian Fields Rd, Marshall, Tx 75672

Customer Service: 903-472-0928

www.thumperfab.com