

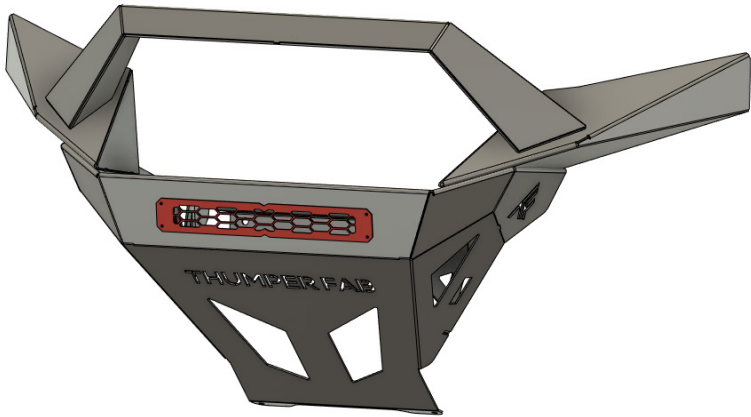


THUMPER FAB

Aluminum Audio Roofs • Roll Cages • UTV Accessories

Polaris Ranger XP1000 Big Winch Bumper

SKU: TF010503



Thumper Fab

5103 Elysian Fields Rd, Marshall, TX 75672

Customer Service: 903-472-0928

www.thumperfab.com

Ver. 1123

Polaris Ranger XP1000

Big Winch Bumper

SKU: TF010503

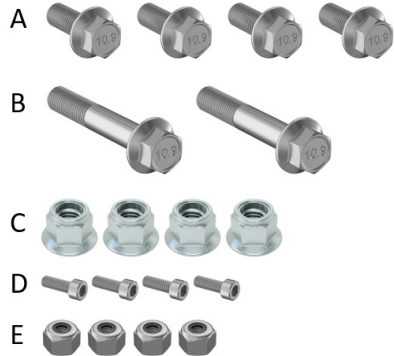
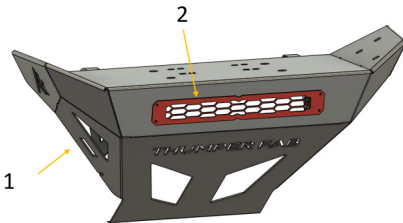


PARTS

REF	QTY	DESCRIPTION
1	1	Big Winch Bumper
2	1	Light Bar Cover
HARDWARE KIT		
A	4	M10-1.5 x 25mm Flange Head Bolt
B	2	M10-1.25 x 60mm Flanged Head Bolt
C	4	M10-1.5 Flanged Nylon Lock Nut
D	4	#8-32 Nylon Lock Nut
E	4	#8-32 x 1/2" Socket Cap Screw

TOOLS

- 9/64" Allen Wrench
- 11/32" Wrench
- 15mm Wrench
- 15mm Socket



BEFORE YOU BEGIN

If you do not feel comfortable installing your **Thumper Fab** Big Winch Bumper, please see your nearest Polaris® Dealer for installation.

Polaris Ranger XP1000

Big Winch Bumper

SKU: TF010503

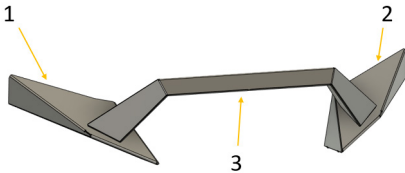


PARTS (OPTIONAL WING + BULLBAR)

REF	QTY	DESCRIPTION
3	1	Driver Side Wing
4	1	Passenger Side Wing
5	1	Bull Bar
HARDWARE KIT		
F	10	M8-1.25 x 20mm Flange Head Bolt

TOOLS

- 13mm Wrench



BEFORE YOU BEGIN

If you do not feel comfortable installing your **Thumper Fab** Big Winch Bumper, please see your nearest Polaris® Dealer for installation.

INSTALLATION INSTRUCTIONS

Installation Preparation

Remove the OEM Bumper using a 15mm socket and 15mm wrench (FIG 1 & FIG 2).

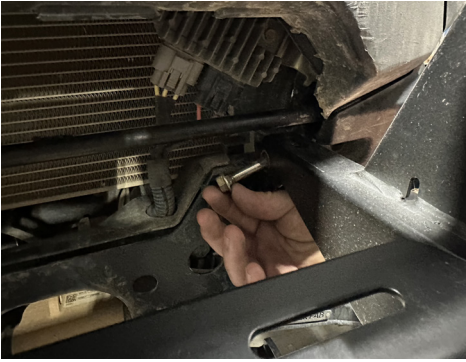


FIG 1 - Use 15mm Socket and 15mm Wrench to remove OEM bumper mounting Hardware



FIG 2 - Remove OEM Bumper

If the light bar option was purchased, install the light bar inside the bumper using the tools and hardware provided in the light bar box (FIG 3).



FIG 3 - If light bar was purchased, install using tools and hardware provided in light bar box

INSTALLATION INSTRUCTIONS

Installation Preparation

Install Light Bar Cover (2) using 4 x #8-32 x 1/2 socket cap screws (E) and 4 x #8-32 nylon lock nuts (D). Tighten using 9/64" allen wrench and 11/32" wrench (FIG 4).



FIG 4 - Install Light Bar Cover using 9/64" Allen and 11/32" Wrench

If the bull bar option was purchased, install the driver and passenger side wings (4 & 5) using 6 x M8 flange head bolts (F). Tighten using a 13mm wrench (FIG 5).

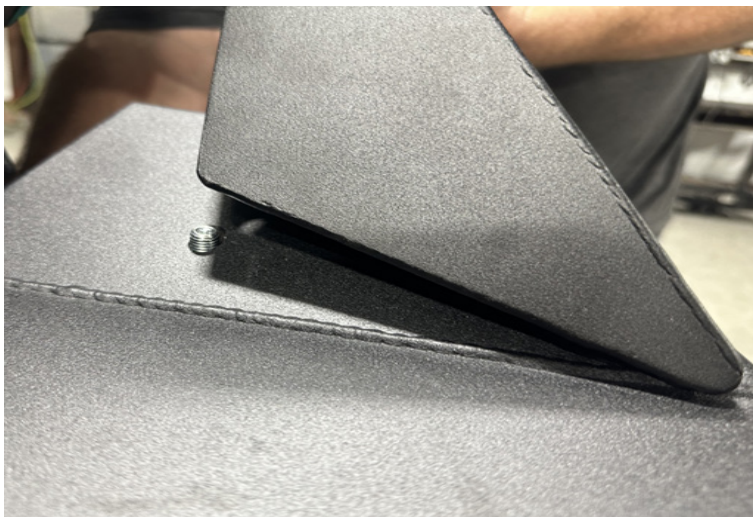


FIG 5 - If Bull Bar option was purchased, install Wings using a 13mm Wench

INSTALLATION INSTRUCTIONS

Installation Preparation

Install Bull Bar (3) using 4 x M8 flange head bolts (F). Tighten using 13mm wrench (FIG 6).



FIG 6 - Install Bull Bar using 13mm Wrench

Installation

Place bumper into place on the unit. Loosely fasten the upper portion of the bumper to the top mounts using 2 x M10 x 60mm flange head bolts (B) (FIG 7).



FIG 7 - Loosely fasten bumper to upper mounts using M10 x 60mm Flange Head Bolts (B)

INSTALLATION INSTRUCTIONS

Loosley fasten bumper center mounts using 2 x M10 x 25mm flange head bolts (A) and 2 x M10 flanged nylon lock nuts (C). (FIG 8).



FIG 8 - Loosley fasten center mount using bolts (A) and nuts (C)

Fasten the lower bumper mounts to the frame using 2 x M10 x 25mm flange head bolts (A) and 2 x M10 flanged nylon lock nuts (C). Once all mounting bolts have been started, tighten evenly using a 15mm socket and 15mm wrench (FIG 9 & FIG 10).



FIG 9 & FIG 10 - Loosley fasten bumper to lower mounts using bolts (A) and nuts (C). Tighten all bolts using 15mm Socket and 15mm Wrench

INSTALLATION INSTRUCTIONS

PRODUCT DISCLAIMER

The installation of products sold or manufactured by Thumper Fabrication, LLC (Thumper Fab) including, but not limited to suspension components such as lift kits, audio roofs, roll cages, frame stiffener kits, and tires that exceed the original specifications for the vehicle, may change the vehicle's center of gravity and handling characteristics both on- and off-road. You are aware that the installation of tires that are larger than original vehicle specifications may reduce the effectiveness of the braking system. Use of these products may place added stress to the original factory vehicle components which could cause them to weaken or possibly fail.

Products sold or manufactured by Thumper Fab are intended for off-road use only. Operation of a vehicle modified with these products on a road could result in serious bodily injury or death, and such operation may violate the laws of your state or municipality. You agree to operate your vehicle exclusively in the manner intended by the vehicle manufacturer. You agree that failure to safely and reasonably operate your vehicle could result in serious bodily injury or death, and that, as a result of installation of this product(s) to your vehicle, extreme care must be taken to prevent vehicle rollover or loss of control, which may be more likely to occur as a result of said modifications. You will avoid unsafe maneuvers, including sudden sharp turns or other abrupt maneuvers, which could make a vehicular accident more likely. You understand that Thumper Fab is not responsible or liable for any damages or any injuries to yourself or your passengers that could occur upon possible accidents due to driver error, incorrect installations, bad judgment, incompatibility with other aftermarket accessories or natural disasters to the fullest extent allowable by law. You will have all vehicle occupants fasten seatbelts, if equipped, and wear proper safety equipment, such as DOT approved helmet and eye protection prior to operating the vehicle. You understand and acknowledge that failure to wear proper safety equipment may increase the risk of serious bodily injury or death to yourself and any passengers.

Proper installation of products sold or manufactured by Thumper Fab requires knowledge of the factory recommended procedures for removal and installation of original equipment components. Installation of these products without proper knowledge and experience may affect the performance of these components and the safety of the vehicle and cause serious bodily injury or death. It is strongly recommended that a certified mechanic familiar with the installation of similar components perform the product(s) installation.

Prior to installing any products sold or manufactured by Thumper Fab, you will perform or cause to be performed an inspection of their vehicle to confirm its condition is suitable for the installation of these products. A proper inspection of the vehicle includes confirmation that the vehicle has not been in a collision and is free of corrosion. If the vehicle is suspected to have been in a collision or misused, or is otherwise unsuitable for modification, you will not install the product(s). You will continue to inspect the vehicle prior to each use to confirm its condition is suitable for its intended use, and you acknowledge that the failure to do so may result in serious bodily injury or death, as well as damage to the vehicle itself.

You will install any warning labels provided with the product so it may be prominently seen by yourself and all passengers. You will notify all passengers of the modifications performed to your vehicle prior to operation.

Insurance companies may handle coverage of a modified vehicle differently. Please check with your insurance carrier prior to modifying the vehicle to ensure your coverage remains sufficient. Installation of this product(s) may void your vehicle warranty. If this is a concern, please check with the manufacturer or dealer before purchase or installation of this product(s).



THUMPER FAB

Thumper Fab

5103 Elysian Fields Rd, Marshall, TX 75672

Customer Service: 903-472-0928

www.thumperfab.com