



THUMPER FAB

Aluminum Audio Roofs • Roll Cages • UTV Accessories

2025 Polaris Ranger XP & Ranger 1500 OEM Winglet 6" Light Bar Mount

SKU: TF010010



Thumper Fab

5103 Elysian Fields Rd, Marshall, TX 75672

Customer Service: 903-472-0928

www.thumperfab.com

V-0924

2025 Polaris Ranger XP & Ranger 1500 OEM Winglet 6" Light Bar Mount



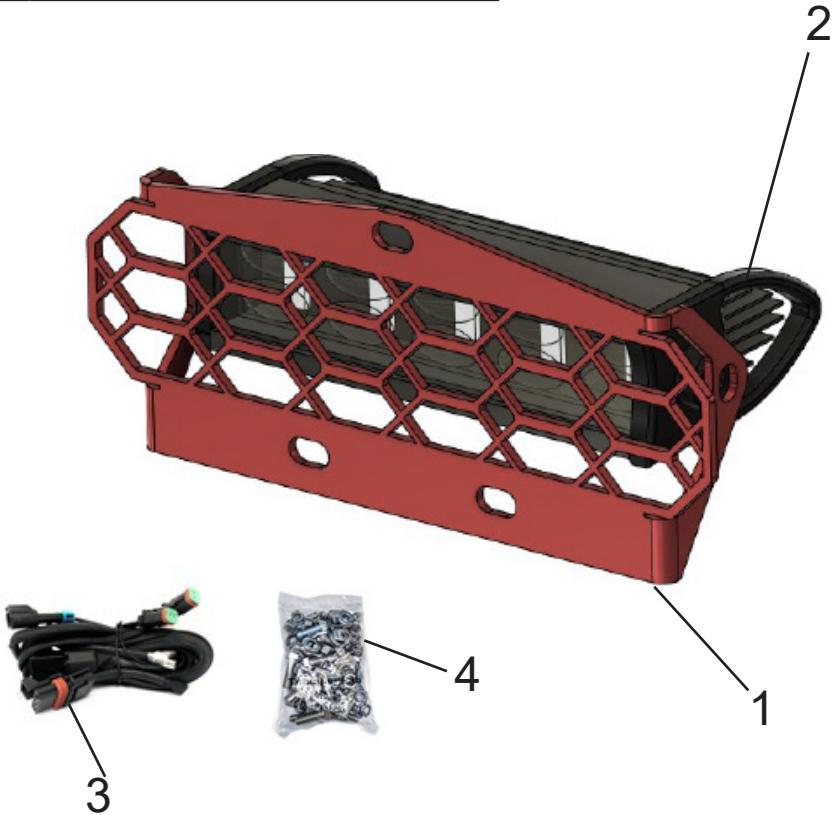
SKU: TF010010

PARTS

REF	QTY	DESCRIPTION
1	2	Light Bracket
2	2	6in LED Light Bar
3	1	Wiring Harness
4	1	Hardware Kit

TOOLS

- 13mm Socket
- 9mm Allen



BEFORE YOU BEGIN

If you do not feel comfortable installing your Thumper Fab Light Mount, please see your nearest Polaris® Dealer for installation.

INSTALLATION INSTRUCTIONS

- 1) It is recommended that the OEM Front Bumper is removed before beginning the install process. This will make installation easier.
- 2) Once the bumper is removed, locate the (6) clip-on barrel nuts in the hardware kit. Slip these onto the mount tabs on the bumper as shown below. (FIG 1 & 2)

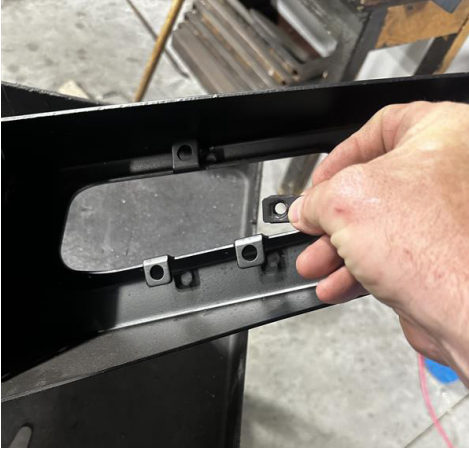


FIG. 1



FIG. 2

- 3) After all of the clip-on barrel nuts have been installed, next install the mount bracket using the M8 Flanged Bolts.



FIG. 3



FIG. 4

INSTALLATION INSTRUCTIONS

4) After the mount brackets have been installed and fastened, install the 6 inch led light bars into place using the hardware supplied with them. (FIG. 5 & 6)



FIG. 5



FIG. 6

5) Next, re-install the bumper onto the unit. Then route the light bar wiring harness in a fashion so that it is hidden and secured. Be sure that the harness is not ran in a fashion that it can get damaged, pinched, etc. Plug the male pulse plug into an available female receptacle in the oem pulse bar. Then route the wires through the firewall for the switch. Choose a position inside the cab to mount the switch. (FIG. 7 & 8)

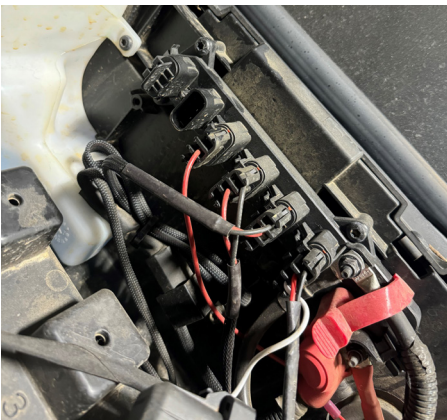


FIG. 7



FIG. 8

INSTALLATION INSTRUCTIONS

6) When connecting the 3 wires to the switch they must be wired as follows: Black on top terminal, white on middle terminal, and blue on the bottom terminal. (FIG. 7)

7. Connect switch wires as follows:

BLACK → TOP (10)*

WHITE → MIDDLE (2)*

BLUE → BOTTOM (4)*

*Numbers correspond to terminals on switch

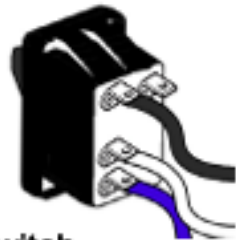


FIG. 7 - Connect wires to the terminals on the switch

INSTALLATION INSTRUCTIONS

PRODUCT DISCLAIMER

The installation of products sold or manufactured by Thumper Fabrication, LLC (Thumper Fab) including, but not limited to suspension components such as lift kits, audio roofs, roll cages, frame stiffener kits, and tires that exceed the original specifications for the vehicle, may change the vehicle's center of gravity and handling characteristics both on- and off-road. You are aware that the installation of tires that are larger than original vehicle specifications may reduce the effectiveness of the braking system. Use of these products may place added stress to the original factory vehicle components which could cause them to weaken or possibly fail.

Products sold or manufactured by Thumper Fab are intended for off-road use only. Operation of a vehicle modified with these products on a road could result in serious bodily injury or death, and such operation may violate the laws of your state or municipality. You agree to operate your vehicle exclusively in the manner intended by the vehicle manufacturer. You agree that failure to safely and reasonably operate your vehicle could result in serious bodily injury or death, and that, as a result of installation of this product(s) to your vehicle, extreme care must be taken to prevent vehicle rollover or loss of control, which may be more likely to occur as a result of said modifications. You will avoid unsafe maneuvers, including sudden sharp turns or other abrupt maneuvers, which could make a vehicular accident more likely. You understand that Thumper Fab is not responsible or liable for any damages or any injuries to yourself or your passengers that could occur upon possible accidents due to driver error, incorrect installations, bad judgment, incompatibility with other aftermarket accessories or natural disasters to the fullest extent allowable by law. You will have all vehicle occupants fasten seatbelts, if equipped, and wear proper safety equipment, such as DOT approved helmet and eye protection prior to operating the vehicle. You understand and acknowledge that failure to wear proper safety equipment may increase the risk of serious bodily injury or death to yourself and any passengers.

Proper installation of products sold or manufactured by Thumper Fab requires knowledge of the factory recommended procedures for removal and installation of original equipment components. Installation of these products without proper knowledge and experience may affect the performance of these components and the safety of the vehicle and cause serious bodily injury or death. It is strongly recommended that a certified mechanic familiar with the installation of similar components perform the product(s) installation.

Prior to installing any products sold or manufactured by Thumper Fab, you will perform or cause to be performed an inspection of their vehicle to confirm its condition is suitable for the installation of these products. A proper inspection of the vehicle includes confirmation that the vehicle has not been in a collision and is free of corrosion. If the vehicle is suspected to have been in a collision or misused, or is otherwise unsuitable for modification, you will not install the product(s). You will continue to inspect the vehicle prior to each use to confirm its condition is suitable for its intended use, and you acknowledge that the failure to do so may result in serious bodily injury or death, as well as damage to the vehicle itself.

You will install any warning labels provided with the product so it may be prominently seen by yourself and all passengers. You will notify all passengers of the modifications performed to your vehicle prior to operation.

Insurance companies may handle coverage of a modified vehicle differently. Please check with your insurance carrier prior to modifying the vehicle to ensure your coverage remains sufficient. Installation of this product(s) may void your vehicle warranty. If this is a concern, please check with the manufacturer or dealer before purchase or installation of this product(s).