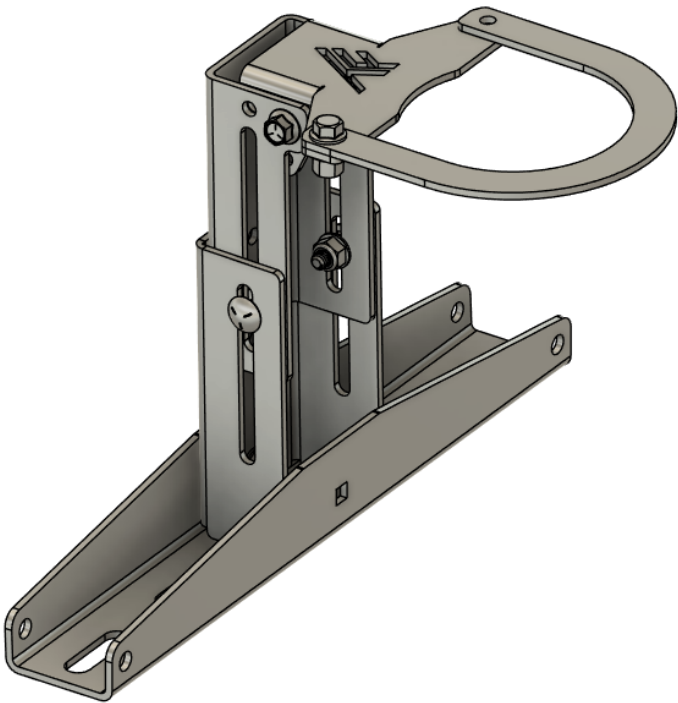


**Universal
Adjustable Jug Mount**

SKU: TF000011



Thumper Fab
5103 Elysian Fields Rd, Marshall, TX 75672
Customer Service: 903-472-0928

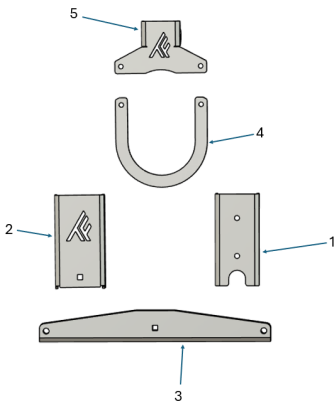
Universal Adjustable Jug Mount

SKU: TF000011



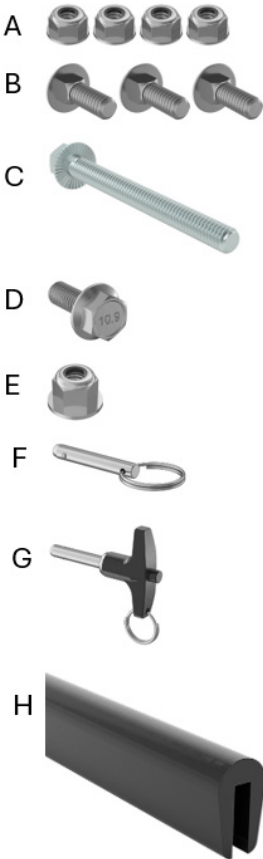
PARTS

REF	QTY	DESCRIPTION
1	1	Bed Rail Attachment Plate
2	1	Bed Rail Adjustment Plate
3	1	Foot Bracket
4	1	Tank Release Ring
5	1	Pivoting Attachment Plate
HARDWARE KIT		
A	4	1/4-20 Flanged Nylon lock Nut
B	3	1/4-20 x 3/4" Carriage Bolt
C	1	1/4-20 x 2-3/4" Flanged Head Bolt
D	1	M6x16mm Flange Head Bolt
E	1	M6 Flange Nylon Lock Nut
F	1	Ring Lock Pin
G	1	Button Lock Pin
H	1	12 Inches Trim



TOOLS

- 7/16" Socket and Wrench
- 10mm Socket and Wrench



BEFORE YOU BEGIN

If you do not feel comfortable installing your **Thumper Fab** Adjustable Jug Mount, please see your nearest Dealer for installation.

INSTALLATION INSTRUCTIONS

Installation Preparation

Fasten the bed rail attachment plate (1) to the foot bracket (3) using 1 X 1/4-20 x 3/4" flange bolt (B) and 1 X 1/4-20 flange head lock nut (A). Tighten using a 7/16" wrench (FIG 1 & FIG 2).

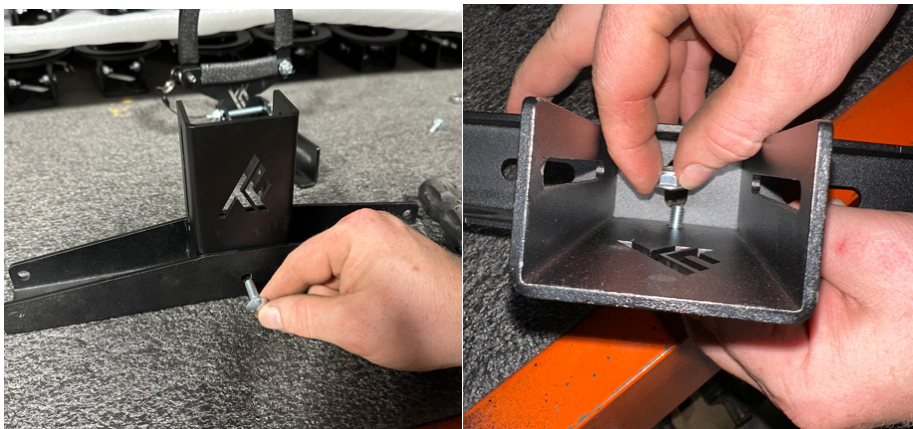


FIG 1 & FIG 2 - Fasten Bed Rail Attachment Plate to Foot Bracket using a 7/16" Wrench

Loosely fasten bed rail adjustment plate (2) to bed rail attachment plate (1) using the 1/4-20 x 3/4" carriage bolts (B) and 2 X 1/4" flange lock nut (A). Loosely tighten using a 7/16" socket (FIG 3).



FIG 3 - Loosely fasten Bed Rail Adjustment Plate to Bed Rail Attachment Plate using a 7/16" Socket

INSTALLATION INSTRUCTIONS

Installation Preparation

Fasten the pivoting attachment plate (5) to the bed rail adjustment plate (2) using the 1/4-20 x 2-3/4" flange bolt (C), 1/4-20 flange head lock nut (A) (FIG 4).



FIG 4 - Fasten Pivoting Attachment Plate to Bed Rail Adjustment Plate using 7/16" Socket and 7/16" Wrench

Fasten tank release ring (4) and button lock pin (G) to pivoting attachment plate (5) using the M6x16mm flange bolt (D) and M6 flange lock nut (E). Do not overtighten to allow release ring (4) to turn for installation and removal of jug (FIG 5).

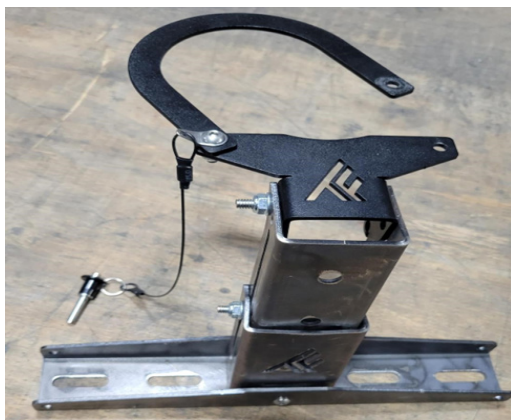


FIG 5 - Fasten Tank Release Ring (4) and button lock pin (G) to Pivoting Attachment Plate (5) using a 10mm Socket and 10mm Wrench

INSTALLATION INSTRUCTIONS

Installation Preparation

Cut trim (**H**) and slide over pivoting attachment plate (**5**) and tank release ring (**4**) to prevent jug from rattling when secured (**FIG 6**).



FIG 6 - Install trim over Pivoting Attachment Plate (5) and Tank Release Ring (4)

Place jug holder into position on bed rail with jug sitting in bed. Adjust the height of the jug holder with the 1/4-20 x 3/4" carriage bolts (**B**) and 1/4-20 flange nylon lock nuts (**A**). Fully tighten when desired height is achieved (**FIG 6**).



FIG 6 - Adjust height of Jug Holder to grab jug neck. Tighten using 7/16" Wrench

INSTALLATION INSTRUCTIONS

Installation Preparation

Install ring lock pin (F) into place to lock the pivoting attachment plate into position (5) (FIG 7).



FIG 7 - Install Ring Lock Pin (F) to lock Pivoting Attachment Plate (5)

When jug is not being used, pivoting attachment plate can rotate down and be pinned out of the way using ring lock pin (F) (FIG 8).



FIG 8 - Rotate Pivoting Attachment Plate down and lock using Ring Lock Pin (F)

Ranger 1000 Instructions

Adjustable Jug Mount

SKU: TF000011



PARTS

HARDWARE KIT		
J	2	Lock and Ride Fasteners
K	2	5/16" Flange Lock Nuts

TOOLS

- 1/2" Socket



BEFORE YOU BEGIN

If you do not feel comfortable installing your **Thumper Fab** Adjustable Jug Mount, please see your nearest Dealer for installation.

INSTALLATION INSTRUCTIONS

Installation

Loosley fasten lock and ride fasteners (J) to jug mount assembly using 2 x 5/16" flange lock nuts (K) (FIG 9 & FIG 10).



FIG 9 & FIG 10 - Loosley fasten lock and ride fasteners to jug mount assembly

Slide lock and ride fasteners (J) into lock and ride holes and tighten 5/16" nuts (K) using 1/2" socket. Fasten jug to mount assembly using bungee cord (I). Lock can be used in place of button lock pin (G) (FIG 11 & FIG 12).

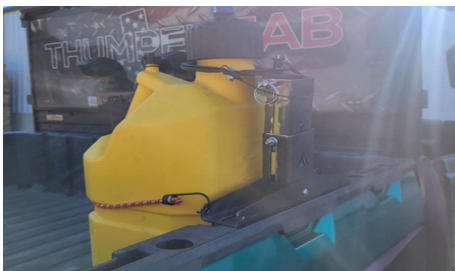


FIG 11 - Mount Jug Mount assembly using 1/2" Socket. Fasten jug to assembly using Bungee Cord (I)



FIG 12 - Lock can be used in place of Button Lock Pin (G)

Ranger 1500XD Instructions

Adjustable Jug Mount

SKU: TF000011

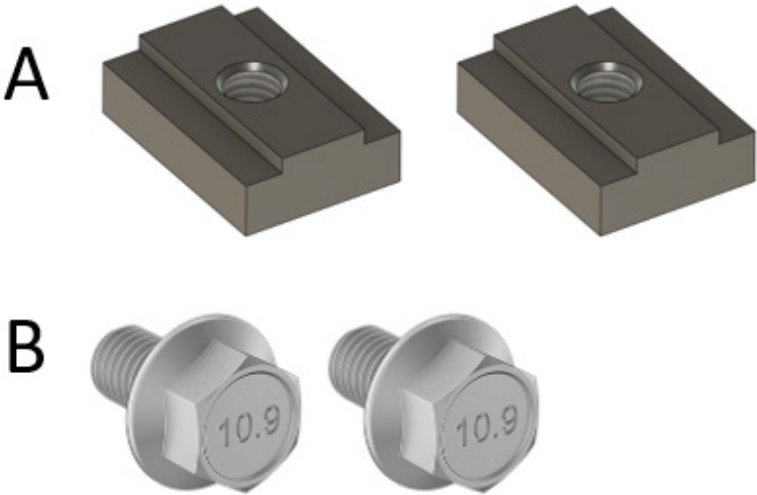


PARTS

HARDWARE KIT		
L	2	Lock and Ride Max Fasteners
M	2	M8 Flange Head Bolts

TOOLS

- 12mm Socket
- Flathead Screwdriver



BEFORE YOU BEGIN

If you do not feel comfortable installing your **Thumper Fab** Adjustable Jug Mount, please see your nearest Dealer for installation.

INSTALLATION INSTRUCTIONS

Installation

Tilt the bed all the way back to gain access to the front of the lock and ride max rail system. Slide 2 x lock and ride max fastener (L) into rail (**FIG 13 & FIG 14**).



FIG 13 & FIG 14 - Insert 2 x Lock and Ride Max Fasteners (L) into rail

Slide lock and ride max fasteners (L) into desired position and place jug mount assembly on top of rail. With the jug mount and fasteners (L) in position, fasten jug mount assembly to rail using 2 x M8 flange head bolts (M). Tighten using a 12mm socket. A flathead screwdriver can be used to raise fasteners into position to start bolts if needed (**FIG 15**).



FIG 15 - Fasten Jug mount to rail using 12mm Socket

INSTALLATION INSTRUCTIONS

PRODUCT DISCLAIMER

The installation of products sold or manufactured by Thumper Fabrication, LLC (Thumper Fab) including, but not limited to suspension components such as lift kits, audio roofs, roll cages, frame stiffener kits, and tires that exceed the original specifications for the vehicle, may change the vehicle's center of gravity and handling characteristics both on- and off-road. You are aware that the installation of tires that are larger than original vehicle specifications may reduce the effectiveness of the braking system. Use of these products may place added stress to the original factory vehicle components which could cause them to weaken or possibly fail.

Products sold or manufactured by Thumper Fab are intended for off-road use only. Operation of a vehicle modified with these products on a road could result in serious bodily injury or death, and such operation may violate the laws of your state or municipality. You agree to operate your vehicle exclusively in the manner intended by the vehicle manufacturer. You agree that failure to safely and reasonably operate your vehicle could result in serious bodily injury or death, and that, as a result of installation of this product(s) to your vehicle, extreme care must be taken to prevent vehicle rollover or loss of control, which may be more likely to occur as a result of said modifications. You will avoid unsafe maneuvers, including sudden sharp turns or other abrupt maneuvers, which could make a vehicular accident more likely. You understand that Thumper Fab is not responsible or liable for any damages or any injuries to yourself or your passengers that could occur upon possible accidents due to driver error, incorrect installations, bad judgment, incompatibility with other aftermarket accessories or natural disasters to the fullest extent allowable by law. You will have all vehicle occupants fasten seatbelts, if equipped, and wear proper safety equipment, such as DOT approved helmet and eye protection prior to operating the vehicle. You understand and acknowledge that failure to wear proper safety equipment may increase the risk of serious bodily injury or death to yourself and any passengers.

Proper installation of products sold or manufactured by Thumper Fab requires knowledge of the factory recommended procedures for removal and installation of original equipment components. Installation of these products without proper knowledge and experience may affect the performance of these components and the safety of the vehicle and cause serious bodily injury or death. It is strongly recommended that a certified mechanic familiar with the installation of similar components perform the product(s) installation.

Prior to installing any products sold or manufactured by Thumper Fab, you will perform or cause to be performed an inspection of their vehicle to confirm its condition is suitable for the installation of these products. A proper inspection of the vehicle includes confirmation that the vehicle has not been in a collision and is free of corrosion. If the vehicle is suspected to have been in a collision or misused, or is otherwise unsuitable for modification, you will not install the product(s). You will continue to inspect the vehicle prior to each use to confirm its condition is suitable for its intended use, and you acknowledge that the failure to do so may result in serious bodily injury or death, as well as damage to the vehicle itself.

You will install any warning labels provided with the product so it may be prominently seen by yourself and all passengers. You will notify all passengers of the modifications performed to your vehicle prior to operation.

Insurance companies may handle coverage of a modified vehicle differently. Please check with your insurance carrier prior to modifying the vehicle to ensure your coverage remains sufficient. Installation of this product(s) may void your vehicle warranty. If this is a concern, please check with the manufacturer or dealer before purchase or installation of this product(s).



Thumper Fab

5103 Elysian Fields Rd, Marshall, Tx 75672

Customer Service: 903-472-0928

www.thumperfab.com