



THUMPER FAB

Aluminum Audio Roofs ♦ Roll Cages ♦ UTV Accessories

CAN-AM MAVERICK X3 2 Seat Nerf Rails

SKU: TF050702



Thumper Fab

5103 Elysian Fields Rd, Marshall, TX 75672

Customer Service: 903-472-0928

www.thumperfab.com

Ver. 0622

CAN-AM MAVERICK X3

Nerf Rails

SKU: TF050702



PARTS

REF	QTY	DESCRIPTION
1	1	Front Driver Rail
2	1	Front Passenger Rail
3	1	Driver Accent Panel
4	1	Passenger Accent Panel
Hardware Kit		
A	6	M10-1.5 x 70mm Cap Screw
B	6	M10 Fender Washer
C	6	M10 Split Lock Washer
D	6	#8-32 x 1/2" Button Cap Screw
E	4	Plastic Plugs

TOOLS

- 17mm Wrench
- 3/32" Allen/Hex Wrench
- 1 1/2" Hole Saw
- Drill
- Utility Knife
- Flat Head Screwdriver

BEFORE YOU BEGIN

If you do not feel comfortable installing your **Thumper Fab** Nerf Rails, please see your nearest Can-Am® Dealer for installation.



INSTALLATION INSTRUCTIONS

Note: Installation is Identical for Driver and Passenger Side Rails

Drill Side Holes

Locate and drill out the 3 indicated holes on each side with the 1 1/2" hole saw (**FIG 1**). There are dimples in the plastic that can be used to reference the hole locations. **NOTE: The factory holes in the frame rails do not line up with the dimples. To compensate for this, the center of the drilled hole should be 3/8" directly above the dimples.**

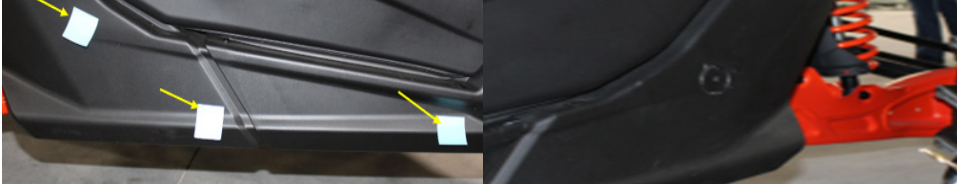


FIG 1 - Drill Holes

Cut out Rear Holes

Adjusting the seats forward or backward will help with install. Locate the circular breakout hole on the inside of the lower side panel (rear most hole). Use the utility knife to cut the tabs and remove the plastic hole cover (**FIG 2**).

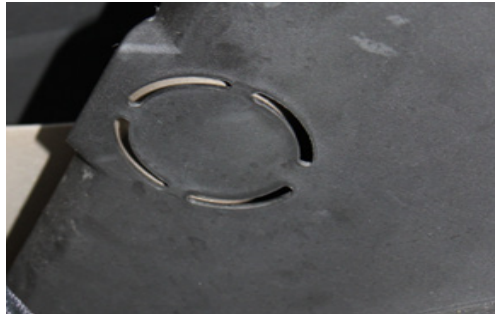


FIG 2 - Cut Out Plastic

Cut Slot in Front Undertrim

Locate the front hole (closest to the front of the unit) on the plastics. Find the slot in the skid plate beneath it. Use the utility knife to trim the plastic, roughly 1-1/2" x 3/4", based on clearance needed to feed and thread the bolt through the frame and tighten with 17mm wrench (**FIG 3**).

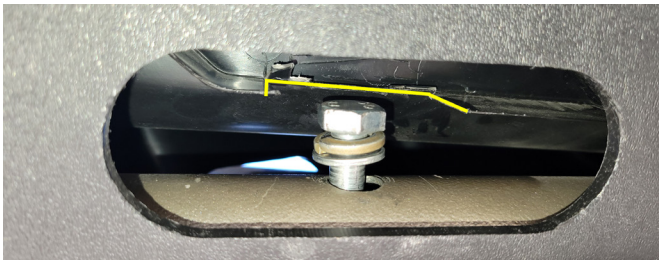


FIG 3 - Cut Plastic in Skid Plate

INSTALLATION INSTRUCTIONS

Install Nerf Rail

Place nerf rail on appropriate side for installation. Align the nerf rail with the cut out holes (**FIG 4**). Use a 17mm wrench and the M10 hardware (**A**) to loosely fasten the rail to the unit using the middle hole first (**FIG 5**). The hardware should run *M10-1.5 x 70mm cap screws (A) → lock washer (C) → fender washer (B) → frame tube → nerf rail threaded tube end*. There will be 3 points where the rail is **loosely** attached (tighten 3-4 threads) to the unit, one assembly at each hole. Attach to middle hole 1st (access inside cab), rear hole 2nd (access from inside cab) & front hole 3rd (access from underneath ***FIG 3***).



FIG 4 - Stage for Nerf Rail Installation



FIG 5 - Bolt and Washer Sequence (17mm Wrench)

INSTALLATION INSTRUCTIONS

Tighten Rail Hardware

When the nerf rail is attached to the unit at all 3 points, tighten all M10 hardware (A) in the same order using 17mm wrench to evenly pull the rail to the frame. **DO NOT OVER TIGHTEN AT RISK OF CRUSHING THE FRAME TUBE.**



Install Accent Panels

Use the 6 x #8-32 x 1/2" bolts (D) to install the accent panels (3,4) to the nerf rail step plates (1,2) using 3/32" allen wrench (FIG 8). The bolts will thread into rivnuts on the nerf rails. Cap each end with a plastic plug (E).



FIG 8 - Install Accent Panels (3/32" Allen Wrench)

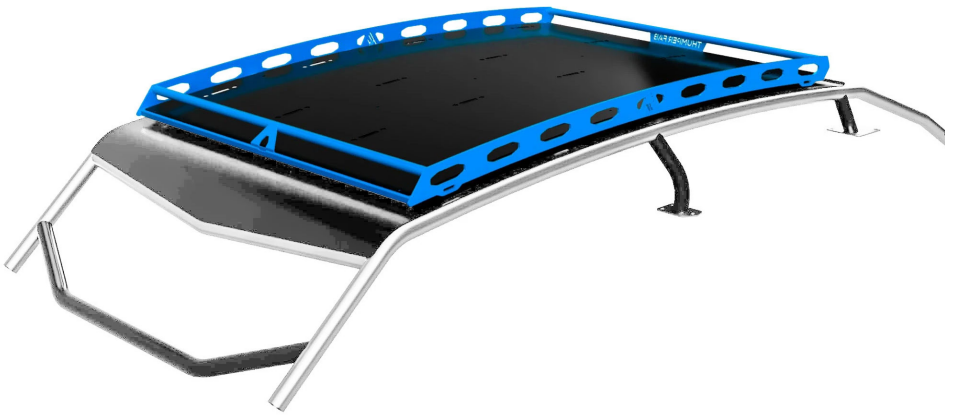
**Enjoying your Thumper Fab Nerf Rails?
Check out these other Thumpin' products
for your Maverick X3 MAX!**



**TF050501 - Front Winch Bumper & Bulkhead
Cube Lights, KC Lights, And Winch Options Available!**



**TF050203 - Roll Cage
Roof And Light Bar Options Available!**



TF051901 - Roof Rack



TF001901 Mighty-Tite Quick Release Tie

The installation of products sold or manufactured by Thumper Fab including, but not limited to suspension components such as lift kits, control arms, frame stiffener kits, roofs, roll cages, and tires that exceed the original specifications for the vehicle, may change the vehicle's center of gravity and handling characteristics both on- and off-road. You are aware that the installation of tires that are larger than original vehicle specifications may reduce the effectiveness of the braking system. Use of these products may place added stress to the original factory vehicle components which could cause them to weaken or possibly fail.

Products sold or manufactured by Thumper Fab are intended for off-road use only. Operation of a vehicle modified with these products on a road could result in serious bodily injury or death, and such operation may violate the laws of your state or municipality. You agree to operate your vehicle exclusively in the manner intended by the vehicle manufacturer. You agree that failure to safely and reasonably operate your vehicle could result in serious bodily injury or death, and that, as a result of installation of this product(s) to your vehicle, extreme care must be taken to prevent vehicle rollover or loss of control, which may be more likely to occur as a result of said modifications. You will avoid unsafe maneuvers, including sudden sharp turns or other abrupt maneuvers, which could make a vehicular accident more likely. You understand that Thumper Fab is not responsible or liable for any damages or any injuries to yourself or your passengers that could occur upon possible accidents due to driver error, incorrect installations, bad judgment, incompatibility with other after-market accessories or natural disasters to the fullest extent allowable by law. You will have all vehicle occupants fasten seatbelts, if equipped, and wear proper safety equipment, such as DOT approved helmet and eye protection prior to operating the vehicle. You understand and acknowledge that failure to wear proper safety equipment may increase the risk of serious bodily injury or death to yourself and any passengers.

Proper installation of products sold or manufactured by Thumper Fab requires knowledge of the factory recommended procedures for removal and installation of original equipment components.

Installation of these products without proper knowledge and experience may affect the performance of these components and the safety of the vehicle and cause serious bodily injury or death. It is strongly recommended that a certified mechanic familiar with the installation of similar components perform the product(s) installation.

Prior to installing any products sold or manufactured by Thumper Fab, you will perform or cause to be performed an inspection of their vehicle to confirm its condition is suitable for the installation of these products. A proper inspection of the vehicle includes confirmation that the vehicle has not been in a collision and is free of corrosion. If the vehicle is suspected to have been in a collision or misused, or is otherwise unsuitable for modification, you will not install the product(s). You will continue to inspect the vehicle prior to each use to confirm its condition is suitable for its intended use, and you acknowledge that the failure to do so may result in serious bodily injury or death, as well as damage to the vehicle itself.

You will install any warning labels provided with the product so it may be prominently seen by yourself and all passengers. You will notify all passengers of the modifications performed to your vehicle prior to operation.

Insurance companies may handle coverage of a modified vehicle differently. Please check with your insurance carrier prior to modifying the vehicle to ensure your coverage remains sufficient.

Installation of this product(s) may void your vehicle warranty. If this is a concern, please check with the manufacturer or dealer before purchase or installation of this product(s).



THUMPER FAB

Thumper Fab

5103 Elysian Fields Rd, Marshall, Tx 75672

Customer Service: 903-472-0928

www.thumperfab.com