



THUMPER FAB

Aluminum Audio Roofs • Roll Cages • UTV Accessories

RZR Pro XP / Pro R Rock Sliders

SKU: TF130701 & TF130702



Thumper Fab

5103 Elysian Fields Rd, Marshall, TX 75672

Customer Service: 903-472-0928

www.thumperfab.com

Ver. 0723

RZR Pro XP / Pro R Rock Sliders

SKU: TF130701 & TF130702

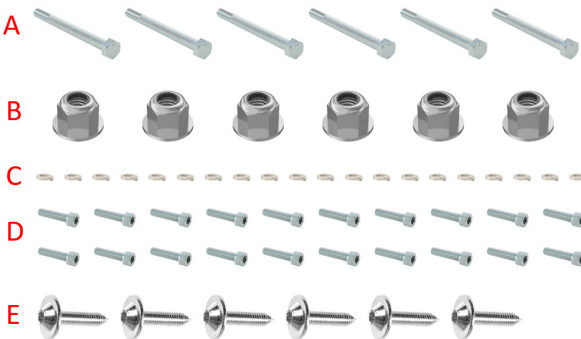


PARTS (2 Seat Models)

REF	QTY	DESCRIPTION
1	1	Drivers Side Rock Slider
2	1	Passenger Side Rock Slider
3	6	Mount Tubes
4	4	Accent Panel #1
5	2	Accent Panel #2
6	2	Accent Panel #3
HARDWARE KIT		
A	6	M12-1.75 x 150mm Hex Head Bolt
B	6	M12-1.75 Nylon Insert Flange Lock Nut
C	20	#8 Lock Washer
D	20	#8/32 x 3/4" Button Head Socket Cap Screw
E	6	M6-1.0 x 30mm Torx Head Body Bolt

TOOLS

- 18mm Socket
- 19mm Socket
- Measuring Tape
- Marker
- Drill
- 3/16" Drill Bit
- 1.5" Hole Saw
- T30 Torx
- 9/64" Allen



BEFORE YOU BEGIN

If you do not feel comfortable installing your Thumper Fab Rock Sliders, please see your nearest Polaris® Dealer for installation.

RZR Pro XP / Pro R Rock Sliders

SKU: TF130701 & TF130702

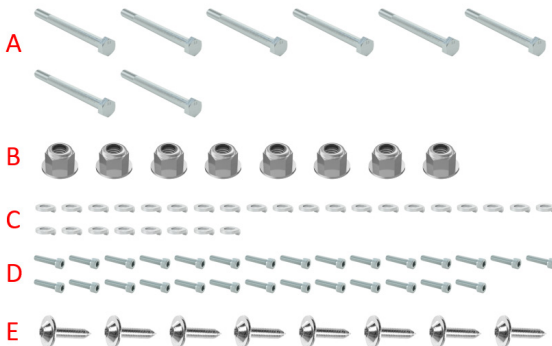


PARTS (4 Seat Models)

REF	QTY	DESCRIPTION
1	1	Drivers Side Rock Slider
2	1	Passenger Side Rock Slider
3	8	Mount Tubes
4	6	Accent Panel #1
5	2	Accent Panel #2
6	2	Accent Panel #3
7	2	Accent Panel #4
HARDWARE KIT		
A	8	M12-1.75 x 150mm Hex Head Bolt
B	8	M12-1.75 Nylon Insert Flange Lock Nut
C	28	#8 Lock Washer
D	28	#8/32 x 3/4" Button Head Socket Cap Screw
E	8	M6-1.0 x 30mm Torx Head Body Bolt

TOOLS

- 18mm Socket
- 19mm Socket
- Measuring Tape
- Marker
- Drill
- 3/16" Drill Bit
- 1.5" Hole Saw
- T30 Torx
- 9/64" Allen



BEFORE YOU BEGIN

If you do not feel comfortable installing your Thumper Fab Rock Sliders, please see your nearest Polaris® Dealer for installation.

INSTALLATION INSTRUCTIONS

Installation Preparation

Installation process is very similar for 2 seat and 4 seat models. Installation in pictures was completed on a 2 seat model. Using a measuring tape, measure 4 inches from the underside of the skid plate where rock slider mount tubes will contact the frame (below in yellow). Mark this location with a marker and drill out using a 1.5" hole saw to provide access for mounting hardware. Be careful not to drill through gas tank, wires, or hoses (**FIG 1 & FIG 2**).

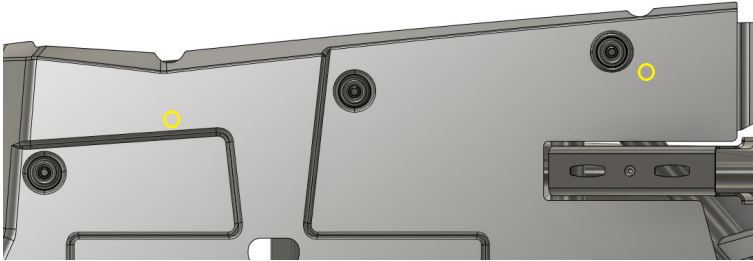


FIG 1 - Align Hole location with notched section of skid plate



FIG 2 - Measure 4 inches from edge of skid plate to mark center of hole. Use 1.5" hole saw to drill out hole

INSTALLATION INSTRUCTIONS

Installation

Insert the M12-1.75 x 150mm hex bolts (A) through the mounting holes provided on the rock sliders. Slide mount tubes (3) over the bolts (A) (FIG 3).



FIG 3 - Insert Hex Bolts (A) through rock slider and slide mount tubes (3) over Hex Bolts (A)

Fit rock slider to unit while inserting mount tubes (3) and bolts (A) through OEM holes in plastic (FIG 4).



FIG 4 - Slide Mount Tubes (3) through provided holes in plastic and fit rock slider to unit

INSTALLATION INSTRUCTIONS

Installation

Thread M12-1.75 flange lock nuts (**B**) onto hex bolts (**A**) that were slide through the frame. The rear most mount bolt can be accessed from inside the unit behind the seats. All other mounting bolts will have to be accessed from the bottom of the unit through drilled holes (**FIG 5 & 6**).

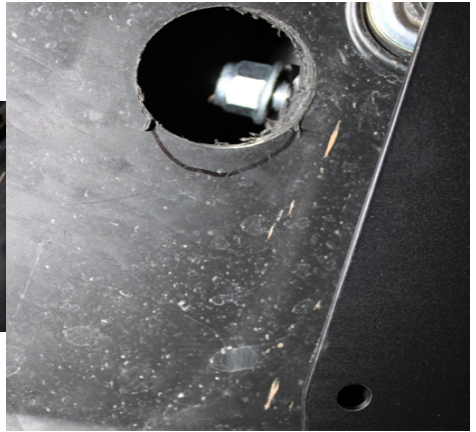
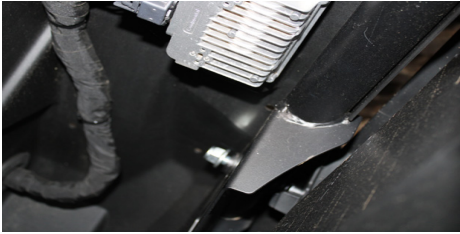


FIG 5 & 6 - Thread Flange Lock Nuts (B) onto Hex Bolts (A). Picture on left shows rear mounting bolts, right picture shows bolt access under unit.

Use a 19mm socket and an 18mm wrench to tighten mounting hardware after all nuts (**B**) have been threaded on bolts (**A**) (**FIG 7**).



FIG 7 - Use a 19mm Socket and an 18mm Wrench to tighten mounting hardware

INSTALLATION INSTRUCTIONS

Installation

Use a 3/16" drill bit to drill through the holes in the frame to prepare for the M6-1.0 x 30mm body bolts (E). Use a T30 Torx to fasten the body bolts (E) through the rock slider into the frame (FIG 8 & FIG 9).

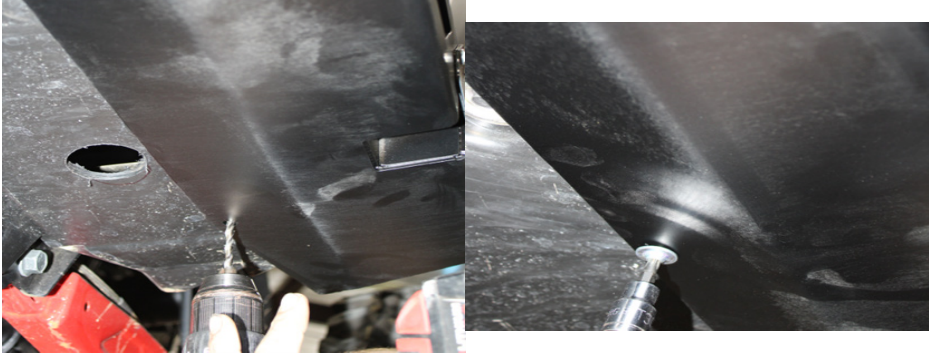


FIG 8 & 9 - Drill holes into frame using 3/16 drill bit, fasten Body Bolts (E) to frame using T30 Torx.

Use a 9/64" allen to fasten the accent panels to the rock sliders using the #8/32 x 3/4" button head socket cap screws (D) and #8 lock washers (C) (FIG 10).



FIG 10 - Use a 9/64" Allen to fasten accent panels rock sliders

INSTALLATION INSTRUCTIONS

PRODUCT DISCLAIMER

The installation of products sold or manufactured by Thumper Fabrication, LLC (Thumper Fab) including, but not limited to suspension components such as lift kits, audio roofs, roll cages, frame stiffener kits, and tires that exceed the original specifications for the vehicle, may change the vehicle's center of gravity and handling characteristics both on- and off-road. You are aware that the installation of tires that are larger than original vehicle specifications may reduce the effectiveness of the braking system. Use of these products may place added stress to the original factory vehicle components which could cause them to weaken or possibly fail.

Products sold or manufactured by Thumper Fab are intended for off-road use only. Operation of a vehicle modified with these products on a road could result in serious bodily injury or death, and such operation may violate the laws of your state or municipality. You agree to operate your vehicle exclusively in the manner intended by the vehicle manufacturer. You agree that failure to safely and reasonably operate your vehicle could result in serious bodily injury or death, and that, as a result of installation of this product(s) to your vehicle, extreme care must be taken to prevent vehicle rollover or loss of control, which may be more likely to occur as a result of said modifications. You will avoid unsafe maneuvers, including sudden sharp turns or other abrupt maneuvers, which could make a vehicular accident more likely. You understand that Thumper Fab is not responsible or liable for any damages or any injuries to yourself or your passengers that could occur upon possible accidents due to driver error, incorrect installations, bad judgment, incompatibility with other aftermarket accessories or natural disasters to the fullest extent allowable by law. You will have all vehicle occupants fasten seatbelts, if equipped, and wear proper safety equipment, such as DOT approved helmet and eye protection prior to operating the vehicle. You understand and acknowledge that failure to wear proper safety equipment may increase the risk of serious bodily injury or death to yourself and any passengers.

Proper installation of products sold or manufactured by Thumper Fab requires knowledge of the factory recommended procedures for removal and installation of original equipment components. Installation of these products without proper knowledge and experience may affect the performance of these components and the safety of the vehicle and cause serious bodily injury or death. It is strongly recommended that a certified mechanic familiar with the installation of similar components perform the product(s) installation.

Prior to installing any products sold or manufactured by Thumper Fab, you will perform or cause to be performed an inspection of their vehicle to confirm its condition is suitable for the installation of these products. A proper inspection of the vehicle includes confirmation that the vehicle has not been in a collision and is free of corrosion. If the vehicle is suspected to have been in a collision or misused, or is otherwise unsuitable for modification, you will not install the product(s). You will continue to inspect the vehicle prior to each use to confirm its condition is suitable for its intended use, and you acknowledge that the failure to do so may result in serious bodily injury or death, as well as damage to the vehicle itself.

You will install any warning labels provided with the product so it may be prominently seen by yourself and all passengers. You will notify all passengers of the modifications performed to your vehicle prior to operation.

Insurance companies may handle coverage of a modified vehicle differently. Please check with your insurance carrier prior to modifying the vehicle to ensure your coverage remains sufficient. Installation of this product(s) may void your vehicle warranty. If this is a concern, please check with the manufacturer or dealer before purchase or installation of this product(s).



THUMPER FAB

Thumper Fab

5103 Elysian Fields Rd, Marshall, TX 75672
Customer Service: 903-472-0928

www.thumperfab.com