

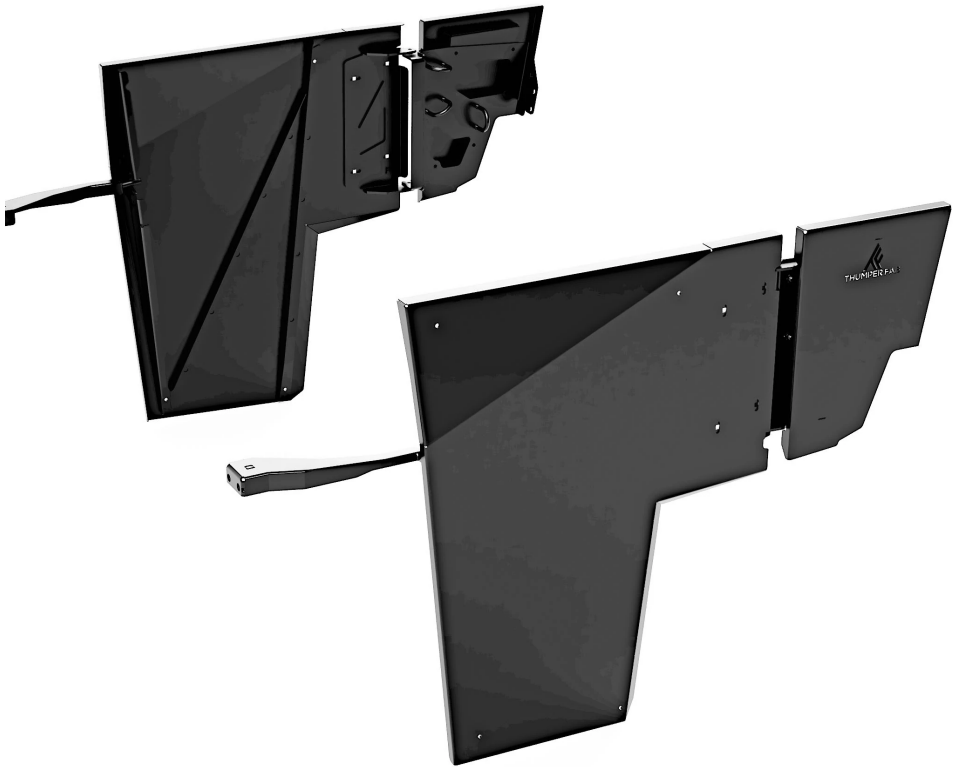


THUMPER FAB

Aluminum Audio Roofs • Roll Cages • UTV Accessories

POLARIS RANGER 500/570 Half Doors

SKU: TF101701



Thumper Fab

5103 Elysian Fields Rd, Marshall, Tx 75672

Customer Service: 903-472-0928

www.thumperfab.com

Ver. 0222

POLARIS RANGER 500/570

Half Doors

SKU: TF101701



PARTS

REF	QTY	DESCRIPTION
1	1	Driver Door
2	1	Passenger Door
3	1	Driver Hinge Bracket
4	1	Passenger Hinge Bracket
5	1	Driver Hinge Mount
6	1	Passenger Hinge Mount
7	1	Driver Panel
8	1	Passenger Panel
9	1	Driver Striker Bracket
10	1	Passenger Striker Bracket
HARDWARE KIT		
A	2	Ball Knob
B	2	M6-1.0 x 20mm Hex Bolt
C	6	1/4"-20 x 1" Hex Button Screw
D	4	Bronze Flange Beushing
E	4	5/16" x 1/2" Nylon Flat Washer
F	4	5/16" E-Clip
G	4	5/16" Clevis Pin
H	16	1/4"-20 x 3/4" Hex Flange Bolt
I	8	1/4"-20 x Hex Flange Nut
J	4	5/16"-18 x 3/4" Hex Flange Screw
K	4	5/16" Split Lock Washer
L	1	Driver Latch
M	1	Passenger Latch
N	6	U-Bolt
O	12	5/16"-18 Hex Flange Lock Nut

TOOLS

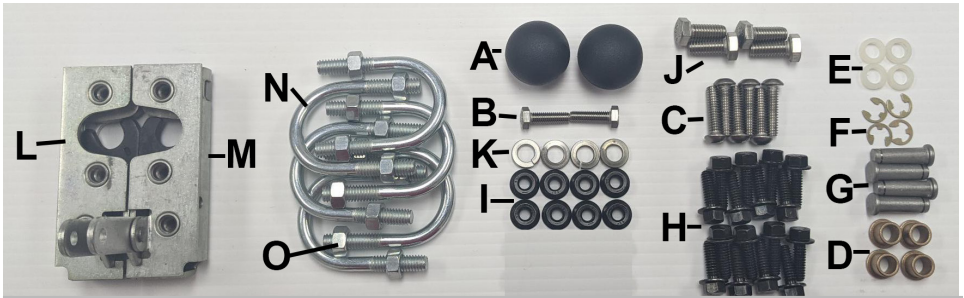
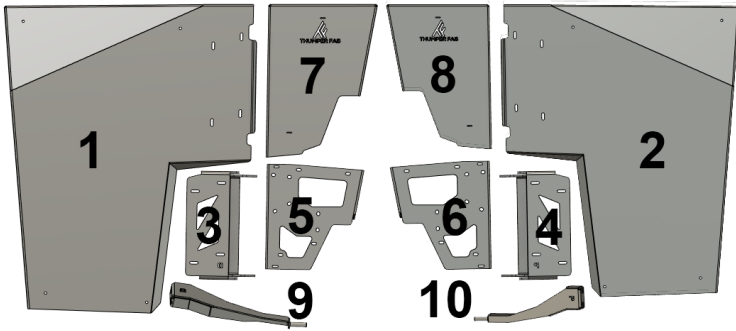
- 10mm Wrench
- 13mm Wrench
- 5/16" Wrench
- 3/8" Wrench
- 7/16" Wrench
- 1/2" Socket
- 4mm Allen Wrench
- 5/32" Allen Wrench
- T-25 Torx Bit
- T-40 Torx Bit
- 1/2" Drill Bit
- Grease

TRIM KIT		
P	228"	32 Narrow Trim Seal
Q	70"	32C Top Trim Seal
R	80"	32A Side Trim Seal
S	30"	3/16 Wide Trim Seal

BEFORE YOU BEGIN

If you do not feel comfortable installing your **Thumper Fab** half doors, please see your nearest Polaris® Dealer for installation.

PARTS AND HARDWARE



INSTALLATION INSTRUCTIONS

Removing Safety Nets

Use the T-40 Torx bit to remove the stock bolts holding on safety nets.

Install the Hinge Brackets

Lightly apply grease to bronze bushings (D). On the top hole of the hinge mount (5,6), place a bronze bushing and push the bushing into place using a press (FIG 1). On the hinge bracket (3,4) press a bronze bushing through lower hole. Place hinge bracket on hinge mount (FIG 2). Brackets are marked (D) for driver's side and (P) for passenger's side.



FIG 1 - Install Bronze Bushing

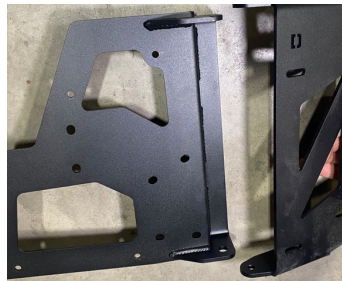


FIG 2 - Install Hinge Bracket to Hinge Mount

INSTALLATION INSTRUCTIONS - Continued

Install the Hinge Brackets - Continued

Use clevis pin hardware to attach brackets to hinge mounts. For the top connection, the order from top to bottom should be *clevis pin (G)* → *hinge bracket* → *nylon washer (E)* → *bushing* → *hinge mount* → *e-clip (F)* (**FIG 3**). For the bottom connection, the order should be *clevis pin* → *hinge mount* → *nylon washer* → *bushing* → *hinge bracket* → *e-clip* (**FIG 4**). You may need to use a mallet to tap clevis pins in.

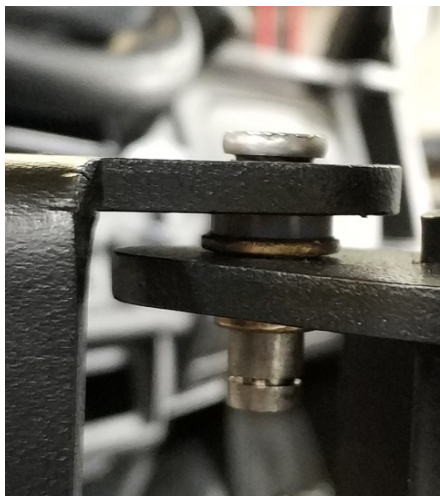
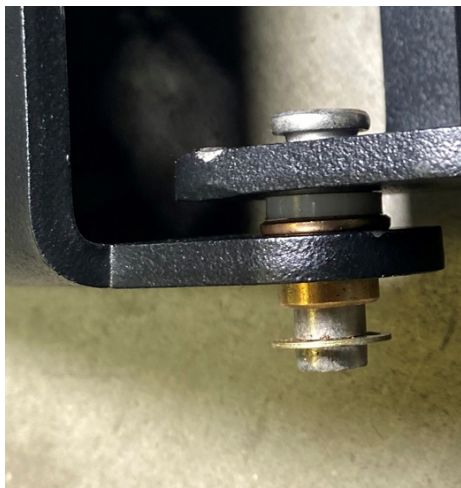


FIG 3 - Top Clevis Assembly



**FIG 4 - Bottom Clevis Assembly
(With E-Clip Installed)**

Install the Hinge Mounts

Using the 13mm wrench/socket, remove the 2 factory bolts from the back of the ROPS (Roll-Over Protection Structure) (**FIG 5**). Also remove the T-25 Torx head screws holding the seat back to the ROPS (**FIG 6**). Position the hinge mount (**5,6**) on the outside of the grab handle of the ROPS. Use the removed stock hardware to attach the back of the hinge mount to the frame (**FIG 7**). Tighten stock hardware. Insert the U-bolts so that they hold the hinge mount onto the grab handle. Loosely thread the 5/16"-18 hex flange nuts (**O**) onto the U-bolts (**N**) and use the 1/2" socket to tighten them. Place the panel (**7,8**) over the hinge mount. Use the 1/4"-20 x 3/4" hex flange bolts to attach the panel to the hinge mount. Start the top bolts by hand to properly locate the two pieces, then the bottom bolts. Tighten using a 3/8" socket (**FIG 8,9,10**). Replace T-25 Torx screws.

INSTALLATION INSTRUCTIONS - Continued



FIG 5 - 13mm Factory Bolts



FIG 6 - T-25 Torx Factory Bolts



FIG 7 - Install U-Bolts



FIG 8 - Start 1/4"-20 Bolts



FIG 9 - Align Panel



FIG 10 - Tighten 1/4"-20 Bolts

Prepare Doors

Use a 4mm Allen wrench and button head screws (**C**) to install latches (**L,M**) onto doors. Use the hardware diagram on page 3 to differentiate between the driver and passenger latches. Do not tighten. Use a 10 mm wrench to install knobs (**A**) onto latches using M6 hex bolts (**B**) (**FIG 11**). You may want to put a drop of Loctite onto the cap screw to prevent it from coming loose due to vibration.

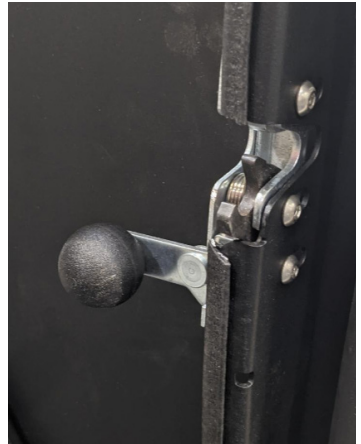


FIG 11 - Latch Installed on Door

FOAM INSTALLATION

Install Trim

Install trim onto doors and hinge mounts. You can cut the trim to the specified lengths and then install it, or run the trim from point to point and cut at the end. You may need a mallet to tap trim onto door.

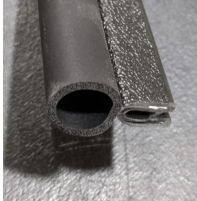
NARROW TRIM - 32



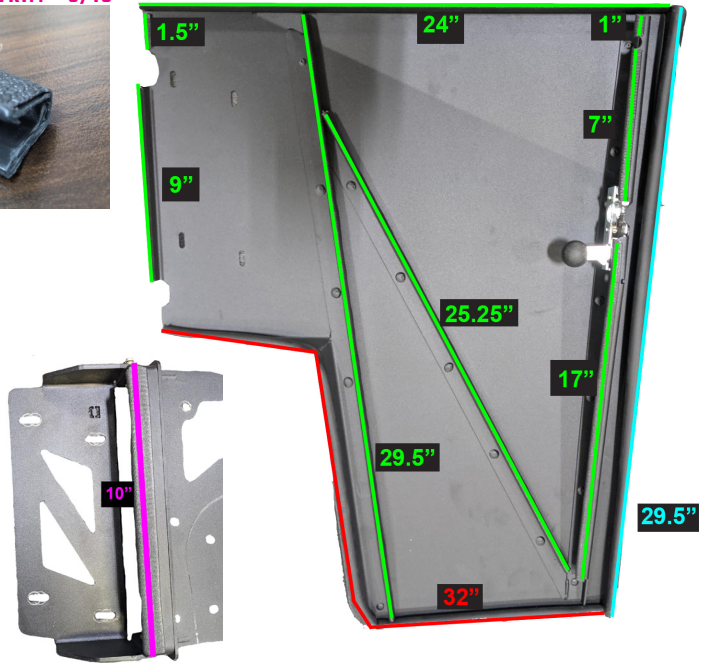
WIDE TRIM - 3/16



TOP D FOAM - 32C



SIDE D FOAM - 32A



INSTALLATION INSTRUCTIONS - Continued

Install the Doors

Position door (1,2) on the hinge bracket. Insert the 1/4" - 20 x 3/4" bolts (H) through the holes on the front of the door and loosely thread on the 1/4" nuts (I) (FIG 12,13). Do not tighten.

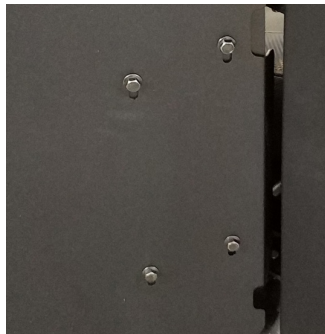


FIG 12- Install Door On Hinge



FIG 13 - Snug with 3/8" Wrench/Socket

INSTALLATION INSTRUCTIONS - Continued

Install the Striker Brackets

Measure 1" directly up from Torx bolt where the fender meets the floorboard (**FIG 14**). Mark and drill a 1/2" hole through the plastic (**Fig 15**). Raise hood of vehicle. Slide pin of striker bracket (**9,10**) through drilled hole, then align holes in striker bracket with holes in frame. Use 5/16" hardware to attach brackets to frame. The hardware order, beginning from the front of the vehicle should be **5/16"-18 x 3/4" Hex Flange Screw (H)** → **5/16" Split Lock Washer (I)** → **vehicle frame** → **weld nut in striker bracket (FIG 16)**. Use 1/2" socket to tighten hardware (**FIG 17**). Lower hood.



FIG 14 - Measure 1" Up From Factory Holes



FIG 15 - Drill 1/2" Hole

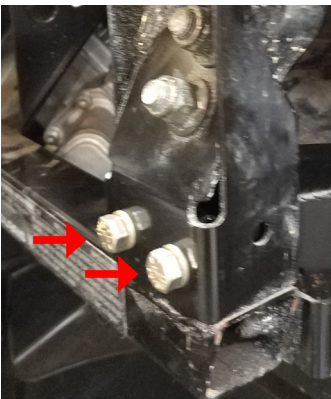


FIG 16 - Striker Bracket Bolts - 1/2" Socket



FIG 17 - Tighten Striker Bracket Bolts

ALIGNMENT INSTRUCTIONS

Begin alignment by adjusting latch. Snug but do not firmly tighten the lowest bolt as far to the outside as possible, and the top bolt near the middle. Leave the middle bolt loose (**FIG 18**). Lift door and attempt to latch the door to the striker pin. As you push the door closed, you should hear two clicks from the latch. If the latch is fully engaged, the bottom of the black locking mechanism should be parallel with the rest of the latch (**FIG 19**). If the latch will not fully engage with the striker pin, you may need to adjust by repositioning the latch by adjusting the 3 bolts in step one. If it still will not engage, you may need to adjust by repositioning the 3 bolts in **FIG 18**.



FIG 18 - Adjust Latch Bolts



FIG 19- Fully Engaged Latch

With the door still closed, tighten bolts that hold the door to the hinge (**FIG 20**) with 3/8" wrenches/sockets. Open door and look to see if it lowers significantly. While a very small drop from its closed position can be expected when opening the door, it should not be significant. If it is, the bolts holding the hinge brackets to the vehicle frame or the bolts holding the door to the hinge assembly may not be tight enough. Make sure the door latches and opens easily. It should require very little force for the latch to fully engage with the striker pin. If you need to use significant force to get the door to latch, you will need to realign it.



FIG 20 - Door/Hinge Bolts



THUMPER FAB

Thumper Fab

5103 Elysian Fields Rd, Marshall, Tx 75672
Customer Service: 903-472-0928

www.thumperfab.com